

Keeping Charts Up to Date

Step by step instructions on updating - Leisure Editions and Leisure Folios;

"As an officer and a navigator, I have ever looked with horror on neglect and indolence, and have never yet crossed the seas without that foresight which is necessary to the well doing of the voyage..."

In these few words Captain Bligh described the essential nature of good seamanship. Proper care of charts is part of that necessary foresight, and keeping your charts up to date according to the latest Notices to Mariners.

Why Update Your Charts?

"Rocks don't move!" is something that is often said by many leisure mariners. True, they tend to remain firmly in situ. However, changes in buoyage and lights, new wrecks, temporary obstructions or depth changes in rivers and estuaries are examples of updates to charts that are critical to safe navigation.

What Do I Need?

The essentials are: a pen with a very fine point (preferably magenta in colour so that it shows up clearly), a copy of Chart 5011 - Symbols and Abbreviations used on ADMIRALTY Charts and internet access to admiralty.co.uk/charts/leisure-charts and the free of charge ADMIRALTY Leisure Notices to Mariners website.

What Are Notices to Mariners?

A Notice to Mariners (NM) is an update or alteration to a chart. Every year the UKHO issues over 5,000 NMs which allow mariners to update their charts to the latest safety-critical information.

Leisure NMs are issued on a weekly basis via the ADMIRALTY website: admiralty.co.uk.

SC5600 The Solent and Approaches

The Notices to Mariners (NMs) listed below apply to the latest edition of SC5600 (3rd Edition) published on 6th January 2005.

L188605 * ENGLAND — South Coast — Southampton — Southampton Water — US Base — Ground tackle. Mooring buoys. Depths. Port developments.
Source: HMHB Portsmouth

Chart SC5600-10 ETRS89 DATUM

Insert: The accompanying block, showing amendments to ground tackle, mooring buoys, depths and port developments, centred on: 50° 52' 12N, 1° 22' 02W.



Above is an example of a typical Notice. The title in bold denotes the NM number, the geographical area or country, a more specific region or port and the nature of the correction. The second line contains the source of the information.

Beneath the title and source is the text of the correction, with clear instructions on the update. In this case, amendments to depths.



Colour Blocks

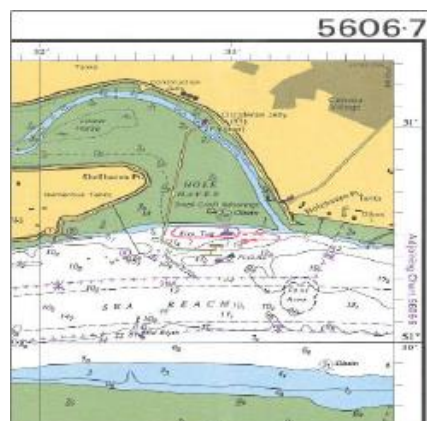
Notices may also be issued as colour blocks where a lot of changes are to be applied. These are simply cut out and glued on the chart at the coordinates specified. It is important to remember to cut off the enclosing black line around the outer limits of the area of the block. A permanent glue stick is ideal for attaching the block since it allows some movement and readjustment immediately after placement.

Applying the Notice to Mariners

1. Determine if the Notice is applicable to your chart and your vessel.
 - You may decide that it isn't relevant to your vessel. For example, changes to a very deep sounding or a new cable in very deep water are not necessarily of interest to the leisure mariner.
2. Apply the Correction
 - When replacing a symbol, find the symbol to be replaced on the chart. Then, as close as possible and not over any other information, draw the new symbol (check Chart 5011). Link the new symbol to the required position with a curved line. Finally draw two diagonal lines through the old symbol to show that it no longer applies.

NB. Always insert new information before you delete any information.

When inserting a new symbol, place it on the exact position given in the NM. If there isn't room follow the process above for a 'replacement symbol' (see below).



You can find detailed instructions and examples of how to apply corrections to charts in the UKHO's publication NP294 - How to Correct your Charts the ADMIRALTY Way.

3. Document the Corrections Applied
 - Check your work and then, in the bottom left-hand corner of the chart, make a note of the number and year of the NM. Only do this once you have applied the correction and not before.
 - If you decide that a correction does not apply to your vessel, making a note of the correction number on the chart will save re-checking at a later date.
4. Using admiralty.co.uk to update your Leisure Charts NMs.

Troubleshooting

- When printing using Adobe Reader up to version 4.0, ensure that the 'Fit to Page' icon in the Adobe Acrobat print menu is switched off.
- With Adobe version 5.0, from the print menu, deselect 'Shrink Oversized Pages to Page Size' and 'Expand Small Pages to Paper Size' then click OK.
- With Adobe versions 6.0 and 7.0, in the Page Scaling Menu, within the print menu, choose 'None' then click OK.
- Certain types of Ink Jet printer require setting to 'Dithered Screening' not 'Pattern Screening'.
- Printed colour copies should be compared with the colour image on screen to ensure that all the colours have reproduced correctly. Printer property resolution and ink density may need to be adjusted to obtain the best results.

Updating ADMIRALTY Leisure Folios

Leisure Folios are a collection of A2 size chartlets, packaged in a waterproof wallet and giving detailed coverage of popular cruising areas. Each Folio of charts can be compiled from as many as 10 Standard Navigational Charts (SNCs). These are listed in the bottom left-hand corner of each chartlet.

1. Go to the ADMIRALTY Notices to Mariners page(www.admiralty.co.uk/maritime-safety-information/admiralty-notice-to-mariners)
2. Select the 'Leisure' tab
3. Under 'ADMIRALTY Leisure Folios', click on the folio number/title.
This will provide all the notices since the last New Edition.
4. It is good practice to update the list of corrections on your chart as you apply them.
5. For successful printing of Colour Blocks, the minimum specification of printer is a good quality Ink Jet/ Laser printer with 300 dpi resolution or greater. To print, click on the usual print icon in Adobe Acrobat.

Troubleshooting

- When printing using Adobe Reader up to version 4.0, ensure that the 'Fit to Page' icon in the Adobe Acrobat print menu is switched off.
- With Adobe version 5.0, from the print menu, deselect 'Shrink Oversized Pages to Page Size' and 'Expand Small Pages to Paper Size' then click OK.
- With Adobe versions 6.0 and 7.0, in the Page Scaling Menu, within the print menu, choose 'None' then click OK.
- Certain types of Ink Jet printer require setting to 'Dithered Screening' not 'Pattern Screening'.
- Printed colour copies should be compared with the colour image on screen to ensure that all the colours have reproduced correctly. Printer property resolution and ink density may need to be adjusted to obtain the best results.
- You may have to trim the block to fit the folio sheet.

Notice

It is strongly recommended that leisure mariners use the latest leisure chart available.
Please note NMs are applicable only to the editions which are current and not to past editions

