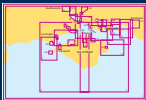


ADMIRALTY

Leisure Chart Folio

The Solent and Approaches



- | | |
|--|--|
| 1 Outer Approaches to the Solent | 13 Spithead |
| 2 Western Solent and Approaches | 14A Approaches to Fareham Lake |
| 3 Eastern Solent and Approaches | 14B Continuation of Fareham Lake |
| 4A Lymington River | 15 Approaches to Port Solent |
| 4B Continuation of Lymington River | 16A Langstone Harbour |
| 4C Yarmouth Harbour | 16B Upper reaches of Langstone Harbour |
| 4D River Yar | 16C Bosham and Fishbourne Channels |
| 5 Needles Channel | 17 Approaches to Langstone and Chichester Harbours |
| 6A Beaulieu River | 18 Harbours, Creeks and Anchorages in The Solent |
| 6B Continuation of Beaulieu River | 18A Alum Bay |
| 6C Newtown River | 18B Bursledon to Botley |
| 6D Continuation of Newtown River | 18C Woolton Creek |
| 7 Yarmouth to Beaulieu River | 18D Hilthead Harbour |
| 8A Entrance to River Hamble | 18E Keyhaven |
| 8B Wexash to Satchell Marsh | 18F Bursledon Harbour |
| 8C Mercury Yacht Harbour to Bursledon Bridge | 19 Eastern Approaches to The Solent |
| 8D Bursledon Bridge | 20 Chichester Harbour |
| 9A River Hamble to Cowes | 21 Cowes Harbour |
| 9B Continuation to Hythe | 22A River Medina |
| 10A River Itchen | 22B Continuation of River Medina |
| 10B Ashlett Creek | 22C River Medina Folly Point to Newport |
| 11 River Test | |
| 12A Entrance to Portsmouth Harbour | |
| 12B Continuation of Forton Lake | |
| 12C Continuation of Stoke Lake | |

Approved by the MCA for meeting paper chart carriage requirements in UK waters for Fishing and MCA Coded Vessels under 24m in length



United Kingdom
Hydrographic Office



17th Edition
SC 5600

1

Southampton

10A

18B

11

9B

8

9A

Chichester

14

15

16B

16C

10B

18D

13

12

Portsmouth

The Solent

Cowes

16A

20

Lymington

7

4

18E

4

6

22

18C

17

Yarmouth

Isle of Wight

18F

19

18A

5

2

3

1

