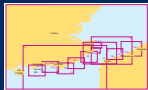


ADMIRALTY

Leisure Chart Folio

Chichester to Ramsgate and Calais to Oostende



- | | | | |
|----|---|-----|--------------------------------|
| 1A | Western approaches to Dover Strait | 11 | Dunkerque to Blankenberge |
| 1B | Northern approaches to Dover Strait | 12A | Calais |
| 2 | Dover to Calais | 12B | Gravelines |
| 3 | Chichester to Worthing | 12C | Dunkerque |
| 4A | Worthing to Newhaven | 12D | Nieuwpoort |
| 4B | Shoreham Harbour - Western Arm and River Adur | 12E | Oostende |
| 5A | Newhaven to Hastings | 13A | Newhaven Harbour |
| 5B | Sovereign Harbour | 13B | Littlehampton Harbour |
| 6A | Hastings to Dungeness | 13C | Brighton Marina |
| 6B | Rye | 13D | Folkestone Harbour |
| 7 | Dungeness to South Foreland | 14A | Dover |
| 8 | Dover to Deal | 14B | Shoreham Harbour - Eastern Arm |
| 9 | Deal to Ramsgate | 14C | Shoreham Harbour - The Canal |
| 10 | Calais to Dunkerque | 15A | Approaches to Ramsgate |
| | | 15B | Ramsgate |

Approved by the MCA for meeting paper chart carriage requirements in UK waters for Fishing and MCA Coded Vessels under 24m in length



