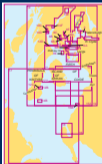


ADMIRALTY

Leisure Chart Folio

Firth of Clyde



- 1A Loch Goll and Loch Long
- 1B Continuation of Loch Long
- 1C Large Yacht Haven
- 1D Milport
- 2A Southern Approaches to Loch Long including Holy Loch
- 2B Continuation of Loch Long
- 2C Cardryke to Helensburgh
- 2D Rhu Narrows
- 4 River Clyde
- 4A Greenock Bank to Pillar Bank
- 4B Pillar Bank to Dumbarton Castle
- 4C Dumbarton Castle to Bowling
- 5 Inverkip to Rothesay
- 6 Plans in the Kyles of Bute
- 6A Rothesay Bay
- 6B Burnt Islands
- 6C Rothesay Harbour
- 7A Rothesay to Largs
- 7B Inchmarnock Sound
- 8A The Kyles of Bute
- 8B Caladh Harbour
- 8C Loch Riddon
- 8D Central Loch Striven
- 8E Upper Loch Striven
- 9 Milport to Farland Head and Garroch Head

- 10A Loch Fyne
- 10B Continuation of Loch Fyne
- 10C Loch Gilp
- 10D Ardrishaig
- 10E Inveraray
- 10F Loch Gaib
- 11 Tarbert to Ardrossan
- 12 Plans on the Mull of Kintyre
- 12A Kilbrannan Sound
- 12B Campbeltown Loch
- 12C Campbeltown Harbour
- 12D East Loch Tarbert
- 13 Ardrossan to Ploidda
- 14A Kildonald Point to Ailua Craig
- 14B Sands Island
- 15A Ploidda to Ailua Craig and Ayr to Girvan
- 15B Girvan
- 16 Ailua Craig to Loch Ryan
- 17 North Channel and Approaches
- 18A Loch Ryan
- 18B Stranraer
- 19 Firth of Clyde

Approved by the MCA for meeting paper chart carriage requirements in UK waters for Fishing and MCA Coded Vessels under 24m in length



