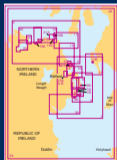




**ADMIRALTY**

Leisure Chart Folio

# Northern Ireland - Carlingford Lough to Lough Foyle



- |     |                                      |     |   |
|-----|--------------------------------------|-----|---|
| 1   | Southern Approaches to North Channel | 15  | Larne Lough Northern Part                               |
| 2   | Western Approaches to North Channel  | 16  | Larne Lough Southern Part                               |
| 3A  | Carlingford Lough to Ardglass        | 17  | North Channel Northern Entrance                         |
| 3B  | Ardglass and Killough Harbours       | 18  | Ballycastle to Portstewart including Rathlin Island     |
| 4   | Ardglass to Donaghadee               | 19A | River Bann to Coleraine                                 |
| 5   | Strangford Lough Entrance            | 19B | Rathlin Harbour   |
| 6   | Strangford Narrows Southern Part     | 19C | Ballycastle   |
| 7A  | Strangford Narrows Northern Part     | 20  | Portrush to Cullinall including Entrance to Lough Foyle |
| 7B  | Strangford                           | 21A | Rathlin Sound   |
| 8   | Strangford Lough                     | 21B | Approaches to Portrush                                  |
| 9A  | Portavoogie to Ballywalter           | 21C | Portrush  |
| 9B  | Portavoogie                          | 22A | Lough Foyle Entrance                                    |
| 10A | Approaches to Donaghadee Sound       | 22B | Continuation to Moville                                 |
| 10B | Donaghadee Sound                     | 23A | Lough Foyle   |
| 11A | Mull of Galloway to Craig Leggan     | 23B | Guilmore Point to Ballymagard                           |
| 11B | Portpatrick                          | 23C | Ballymagard to Londonderry                              |
| 12A | Belfast Lough Entrance               | 24  | North Channel and Irish Sea (Western Part)              |
| 12B | Belfast                              |     |   |
| 13A | Approaches to Belfast                |     |   |
| 13B | Belfast                              |     |   |
| 14  | Larne Lough to Cushendun Bay         |     |   |

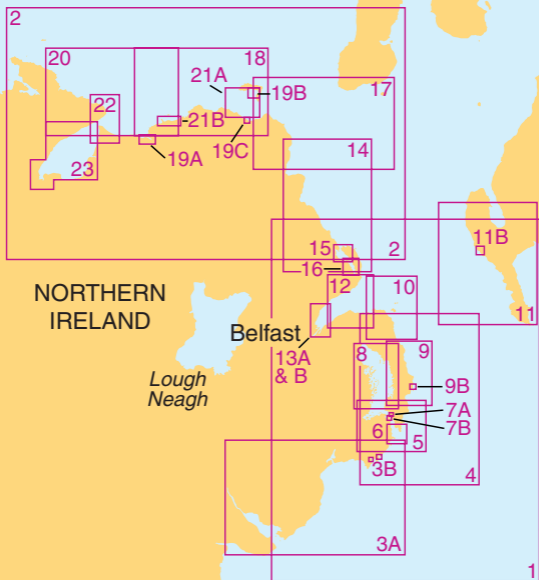
Approved by the MCA for meeting paper chart carriage requirements in UK waters for Fishing and MCA Coded Vessels under 24m in length



United Kingdom  
Hydrographic Office



3rd Edition  
SC 5612



NORTHERN  
IRELAND

*Lough  
Neagh*

Belfast

Isle  
of  
Man

REPUBLIC OF  
IRELAND

Dublin

Holyhead