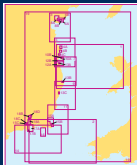


ADMIRALTY

Leisure Chart Folio

# Ireland – East Coast Carlingford Lough to Waterford



- 1 Dublin to Ardgleny
- 2 Waterford to Saint David's Head
- 3 Drogheda to Carlingford Lough
- 4A Skerries Islands
- 4B Rogerstown Inlet
- 4C Malahide Inlet
- 5 Dublin to Drogheda Approaches
- 6A Carlingford Lough (Southern Part)
- 6B Killybeg Harbour
- 7 Wicklow Head to Ban of Howth
- 8A Carlingford Lough (Northern Part)
- 8B Entrance of Carlingford Lough
- 9 Cahore Point to Wicklow Head
- 10A Dublin Bay (Northern Part)
- 10B Howth
- 11 Cansore Point to Cahore Point
- 12A Dublin Bay (Southern Part)
- 12B Part of Dublin
- 13A Dun Laoghaire Harbour
- 13B Wicklow
- 13C Arklow
- 14 Dunabratlin Head to Tuskar Rock

- 15A Wexford and Rosslare
- 15B Rosslare Europort
- 15C Waterford
- 16 Saltee Islands
- 17A Entrance to Waterford Harbour
- 17B Dunmore East Harbour
- 18A Passage East to Beacon Quay and Pink Point
- 18B Continuation of River Barrow to New Ross
- 18C Continuation of Queen's Channel to Waterford
- 18D New Ross
- 19 Irish Sea and Saint George's Channel

Approved by the MCA for meeting paper chart carriage requirements in UK waters for Fishing and MCA Code Vessels under 24m in length



United Kingdom  
Hydrographic Office



3rd Edition  
SC 5621

19

3  
8A  
8B  
6A  
6B

5

4A  
4B  
4C  
10B  
10A  
7  
12B  
12A  
13A

1

13B

9

13C

11

18B  
18D  
18C  
18A  
15C  
17A  
17B  
16

15A

15B

2

14

19

