

Folio Tracing Size 240 x 185 mm	<u>An overview of the new ADMIRALTY NM tracings</u>				How to fit a tracing 1. Find approximate location of tracing on chart (grid box)
			X		

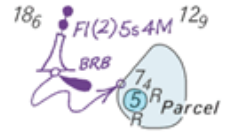
Tracing Examples



Insert

The feature to be inserted is always depicted in its true position on the tracing. If there is not enough clear space to insert the feature in its true position (as per the tracing) then the new feature can be drawn in an open area of the chart and 'arrowed in' to a small circle in the correct position.

Updated Chart Examples



9°00'

2. Find exact location using lines of latitude

and longitude

Move

Move is the only instruction depicted by an arrow symbol. The feature will be shown in its new position with the arrow drawn from its existing position. Occasionally features are moved a short distance from their original position. Draw a small circle at the new position and arrow the feature to that position.



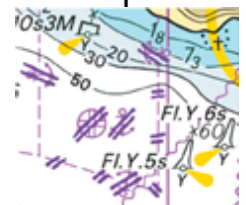
Replace/Amend

The new feature will overlay the existing feature to be deleted and is accompanied by 'in lieu'. Wherever possible, overwriting of existing information should be avoided. Point symbols (i.e. depths, buoys, wrecks) should be inserted in a clear space and 'arrowed' into position. Legends may be amended by inserting the new text in clear space adjacent to the existing charted detail.



Delete

All deletions are depicted by a double strike through line with the deletion symbol annotated adjacent to. Deletions are made by drawing two straight lines through each piece of text or feature to be deleted.



124° 00'

For more information please see the forthcoming publication of How to Keep Your ADMIRALTY Products Up -to-Date NP294 (10th edition)