

Admiralty Leisure Folio
SC5603 Falmouth to Hartland Point, including the Isles of Scilly

The Notices to Mariners (NMs) listed below apply to the latest edition of SC5603 (10th Edition) published on 22nd January 2015.

L690/15 ENGLAND — South Coast — Falmouth — Inner Harbour — North Quay — Light. Leading line.

Source: Falmouth Harbour Commissioners

Chart: SC5603·13 (panel A, Falmouth Harbour) ETRS89 DATUM

Insert ★ DirWRG.3s5m9M *(a)* 50° 09' ·200N. , 5° 03' ·940W.
sectors at light as follows: *(a)* above
G 225·8° - 230·8° (5°)
W 230·8° - 235·8° (5°)
R 235·8° - 240·8° (5°)

~~Temporary/Preliminary NMs~~

~~**L892(T)/15 ENGLAND — Isles of Scilly — Saint Mary's Road to Crow Sound — Nut Rock SW and Innisidgen N — Mooring buoys.**~~

~~Source: Harbour Master, Saint Mary's~~

~~1. Lighted mooring buoys have been established, until summer 2015, in the following positions:~~

~~49° 55' ·73N. , 6° 20' ·28W.
49° 56' ·32N. , 6° 17' ·50W.~~

~~2. (WGS84 Datum)~~

~~**Charts affected — SC5603**~~

L1395/15 ENGLAND — South Coast — Lizard Point E and SE — Depths.

Source: Maritime and Coastguard Agency

Chart: SC5603·2 (panel A, Falmouth to Penzance) ETRS89 DATUM

Insert depth, 9_s, enclosed by 10m contour 49° 57' ·855N. , 5° 10' ·030W.
 depth, 10_s, enclosed by 15m contour *(a)* 49° 57' ·125N. , 5° 10' ·938W.
 depth, 15_t *(b)* 49° 57' ·086N. , 5° 10' ·691W.
Delete depth, 16_s, close W of: *(a)* above
 depth, 17_z, close SE of: *(b)* above

Temporary/Preliminary NMs

~~L1946(T)/15 ENGLAND — Isles of Scilly — Saint Mary's Road to Crow Sound
— Buoyage.~~

Source: ~~Harbour Master, Saint Mary's~~

~~1. Lighted mooring buoys have been established, until summer 2015, in the following positions:~~

~~* 49° 55' 67N. , 6° 20' 34W.~~

~~49° 55' 73N. , 6° 20' 28W.~~

~~49° 56' 32N. , 6° 17' 50W.~~

~~2. * Indicates new or revised entry.~~

~~3. Former Notice L892(T)/15 is cancelled. (WGS84 Datum)~~

~~Charts affected — SC5603~~

Notices to Mariners - Weekly Edition 18/2015 England, South Coast, Plans in South West Cornwall.

— Chart 2345 — New Edition Announcement.

Charts SC5603-2, SC5603-3, SC5603-6 and SC5603-7 WGS84 DATUM

The following changes were published in the new edition of chart 2041, which is the source chart for the above folio sheets:

Includes changes to depths from the latest British Government surveys. Mariners should therefore navigate with caution on sheets SC5603-2, SC5603-3, SC5603-6 and SC5603-7 and be aware that any subsequent Notices to Mariners applied to these sheets are issued for information only.

These changes will be included in the next new edition of SC5603.

L2807/15 ENGLAND — Isles of Scilly — Seven Stones SW — Depths.

Source: CEFAS

Chart: SC5603-14 ETRS89 DATUM

Replace depth, 60, with depth, 53

50° 01' 11N. , 6° 09' 87W.

Temporary/Preliminary NMs

~~L4011(T)/15 ENGLAND — Isles of Scilly — Saint Mary's Road to Crow Sound — Buoyage. Works.~~

~~Source: Harbour Master, Saint Mary's~~

- ~~1. * Works are taking place to extend Saint Mary's quay and are marked by a North Cardinal light-buoy.~~
- ~~2. Lighted mooring buoys have been established, until summer 2015, in the following positions:~~

~~49° 56' 32N. , 6° 17' 50W.~~

~~49° 55' 73N. , 6° 20' 28W.~~

~~49° 55' 67N. , 6° 20' 34W.~~

~~* 49° 55' 15N. , 6° 19' 09W.~~

~~3. * Indicates new or revised entry~~

~~4. Former Notice L1946(T)/15 is cancelled.(WGS84 Datum)~~

Charts affected — SC5603

L5087/15 ENGLAND — South Coast — Falmouth — Penryn River — Wreck. Buoy.

Source: Falmouth Harbour Commissioners

Chart: SC5603-13 (panel A, Falmouth Harbour) ETRS89 DATUM

Delete



(a) 50° 09' 977N. , 5° 04' 780W.



, close SW of:

(a) above

L1362/16 ENGLAND — South Coast — Falmouth Bay SE — Foul.

Source: Falmouth Harbour Commissioners

Chart: SC5603-2 (panel A, Falmouth to Penzance) ETRS89 DATUM

Insert



50° 07' 00N. , 5° 01' 30W.

L2126/16 ENGLAND — South West Coast — Newquay NE — Wind turbines.

Source: UKHO

Chart: SC5603-1 (panel A, Lizard Point to Hartland Point) ETRS89 DATUM

Insert symbol, wind turbine, WIND TURBINE (R Lts)

50° 28' 07N. , 5° 00' 60W.

50° 26' 20N. , 5° 02' 36W.

L2791/16 ENGLAND — Isles of Scilly — Saint Mary's — Approaches to Hugh Town — Buoy.

Source: Saint Mary's Harbour Notice 5/16

Chart: SC5603·8 ETRS89 DATUM

Insert  *Fl(2)G.5s* 49° 55' ·14N. , 6° 19' ·27W.

Chart: SC5603·9 ETRS89 DATUM

Insert  *Fl(2)G.5s* 49° 55' ·14N. , 6° 19' ·27W.

Chart: SC5603·10 ETRS89 DATUM

Insert  *Fl(2)G.5s* 49° 55' ·143N. , 6° 19' ·267W.

Chart: SC5603·11 ETRS89 DATUM

Insert  *Fl(2)G.5s* 49° 55' ·143N. , 6° 19' ·267W.

L3274/16 ENGLAND — Isles of Scilly — Saint Mary's — Approaches to Hugh Town — NM Block. Light.

Source: Saint Mary's Harbour Master

Chart: SC5603·8 ETRS89 DATUM

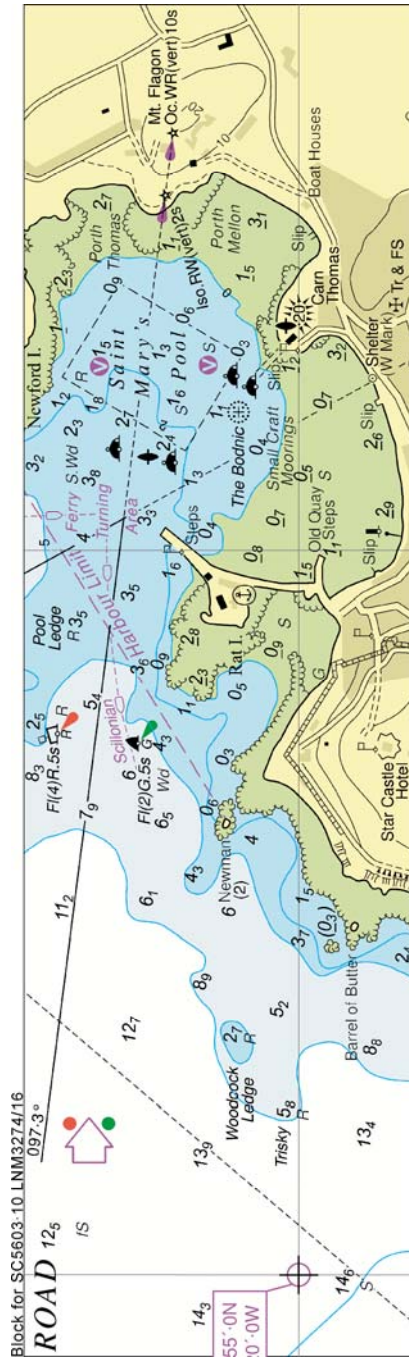
Delete  *Fl.WRG.4M* 49° 55' ·11N. , 6° 19' ·00W.

Chart: SC5603·9 ETRS89 DATUM

Delete  *Fl.WRG.4M* 49° 55' ·11N. , 6° 19' ·00W.

Chart: SC5603·10 ETRS89 DATUM

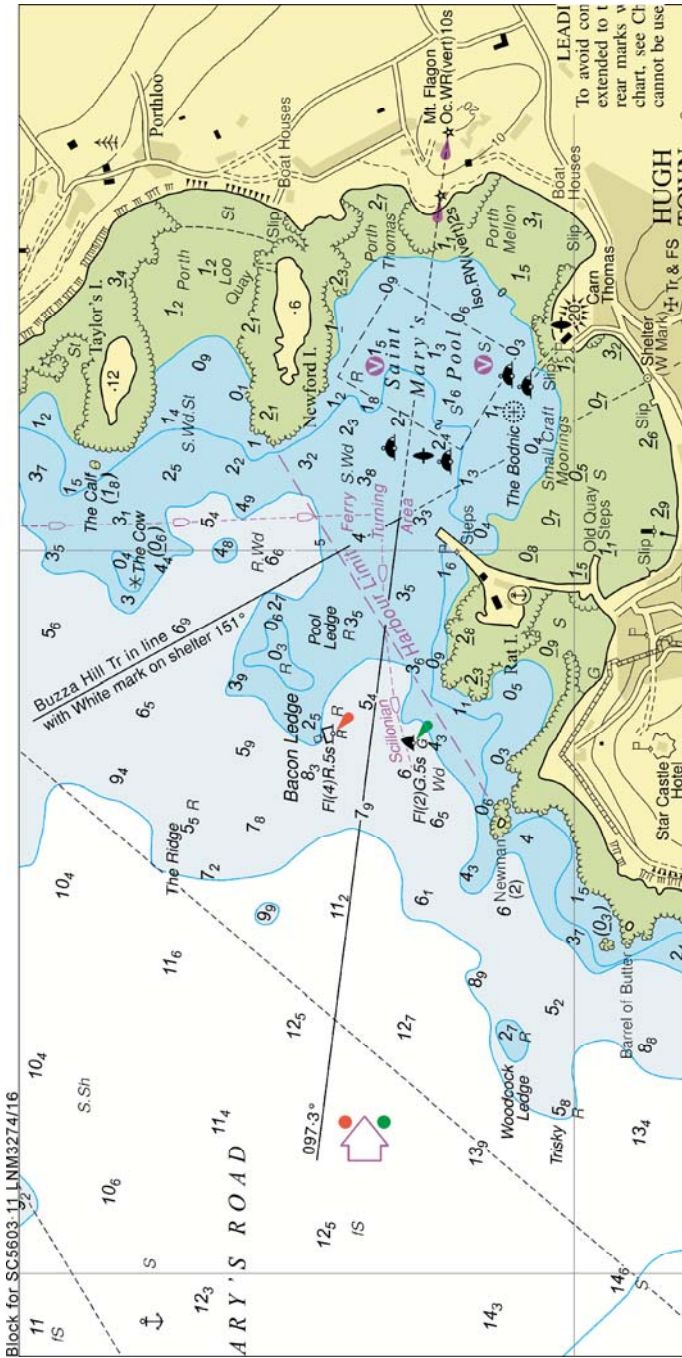
Insert the accompanying block, centred on: 49° 55' ·20N. , 6° 19' ·18W.



Block for SC5603.10 LNM3274/16
Chart: SC5603-11 ETRS89 DATUM

Insert the accompanying block, centred on:

49° 55' ·20N. , 6° 19' ·18W.



L3512/16 ENGLAND — South Coast — Dennis Head E — Buoy.
 Source: Helford Navigational Aids Committee

Chart: SC5603-6 (panel A, Helford River) ETRS89 DATUM

Replace  Car Croc PA, with  Q(3)10s Car Croc (Apr-Oct) PA 50° 05' ·266N. , 5° 05' ·433W.

L3663/16 ENGLAND — Isles of Scilly — White Island N — Seven Stones W — Depths.

Source: mv Seabeam

Chart: SC5603·9 ETRS89 DATUM

Insert depth, 10_b , and extend 15m contour NE to enclose 49° 59' ·02N. , 6° 17' ·23W.
depth, 16_z , enclosed by 20m contour 49° 58' ·99N. , 6° 17' ·44W.

Chart: SC5603·14 ETRS89 DATUM

Insert depth, 10_b , and extend 20m contour NE to enclose 49° 59' ·02N. , 6° 17' ·23W.
depth, 14_z , enclosed by 20m contour (a) 50° 02' ·54N. , 6° 08' ·46W.
Delete depth, 32 , close W of: (a) above

L4764/16 ENGLAND — West Coast — Isles of Scilly — Depths. Drying heights.

Source: Plymouth Coastal Observatory

Chart: SC5603·8 ETRS89 DATUM

Insert depth, 0_3 , enclosed by 2m contour (a) 49° 56' ·03N. , 6° 19' ·37W.
drying height, 1_b , enclosed by 0m low water line (b) 49° 55' ·53N. , 6° 21' ·03W.
drying height, 0_5 , enclosed by 0m low water line (c) 49° 55' ·26N. , 6° 19' ·12W.
drying height, 0_6 , enclosed by 0m low water line (d) 49° 54' ·46N. , 6° 20' ·02W.
Delete depth, 2_t , close NW of: (a) above
depth, 0_3 , close N of: (b) above
depth, 0_3 , close W of: (c) above
depth, 3_t , and associated 5m contour, close N of: (d) above

Chart: SC5603·9 ETRS89 DATUM

Insert drying height, 0_t , enclosed by 0m low water line 49° 58' ·04N. , 6° 19' ·27W.
drying height, 0_7 , enclosed by 0m low water line (a) 49° 56' ·35N. , 6° 17' ·93W.
drying height, 1_6 , enclosed by 0m low water line (b) 49° 56' ·33N. , 6° 19' ·62W.
drying height, 0_5 , enclosed by 0m low water line (c) 49° 56' ·32N. , 6° 21' ·51W.
depth, 0_3 , enclosed by 2m contour (d) 49° 56' ·03N. , 6° 19' ·37W.
drying height, 1_b , enclosed by 0m low water line (e) 49° 55' ·53N. , 6° 21' ·03W.
drying height, 0_5 , enclosed by 0m low water line (f) 49° 55' ·26N. , 6° 19' ·12W.
Delete depth, 0_6 , close NW of: (a) above
depth, 0_6 , close SW of: (b) above
depth, 2_t , close E of: (c) above
depth, 2_t , close NW of: (d) above

depth, O_3 , close N of: (e) above
 depth, O_3 , close W of: (f) above

Chart: SC5603·10 ETRS89 DATUM

Insert drying height, 1_4 , enclosed by 0m low water line (a) 49° 54' ·683N. , 6° 18' ·943W.
 drying height, 0_6 , enclosed by 0m low water line (b) 49° 54' ·457N. , 6° 20' ·016W.
 Delete depth, O_3 , close NW of: (a) above
 depth, O_3 , close E of: (a) above
 depth, 3_4 , close N of: (b) above

Chart: SC5603·11 ETRS89 DATUM

Insert drying height, 0_1 , enclosed by 0m low water line (a) 49° 58' ·040N. , 6° 19' ·268W.
 drying height, 0_7 , enclosed by 0m low water line 49° 56' ·348N. , 6° 17' ·932W.
 drying height, 1_6 , enclosed by 0m low water line (b) 49° 56' ·331N. , 6° 19' ·621W.
 drying height, 0_9 , enclosed by 0m low water line (c) 49° 56' ·317N. , 6° 21' ·515W.
 depth, O_3 , enclosed by 2m contour (d) 49° 56' ·031N. , 6° 19' ·370W.
 drying height, 1_8 , enclosed by 0m low water line (e) 49° 55' ·531N. , 6° 21' ·032W.
 drying height, 0_8 , enclosed by 0m low water line (f) 49° 55' ·261N. , 6° 19' ·119W.
 Delete depth, 1_3 , close NW of: (a) above
 depth, O_6 , close SW of: (b) above
 depth, 2_7 , close E of: (c) above
 depth, 2_9 , close E of: (d) above
 depth, O_3 , close N of: (e) above
 depth, O_6 , close NE of: (f) above
 depth, O_3 , close W of: (f) above

Chart: SC5603·12 ETRS89 DATUM

Insert drying height, 0_7 , enclosed by 0m low water line 49° 56' ·348N. , 6° 17' ·932W.

~~Temporary/Preliminary NMs~~

~~**L4783(P)/16 ENGLAND — West Coast — Isles of Scilly — Depths. Drying heights.**~~

~~Source: Plymouth Coastal Observatory~~

~~1. Numerous depths less than charted exist in the vicinity of the Isles of Scilly. The most significant are as follows:~~

<i>Depth</i>	<i>Position</i>
0.5m	49° 58' ·47N. , 6° 19' ·25W.

1.0m	49° 56' 52N., 6° 15' 70W.
1.3m	49° 56' 35N., 6° 22' 77W.
1.0m	49° 56' 28N., 6° 18' 80W.
1.1m	49° 55' 80N., 6° 22' 63W.
0.6m	49° 55' 36N., 6° 18' 89W.
0.7m	49° 55' 20N., 6° 18' 84W.
2.3m	49° 55' 16N., 6° 21' 58W.
1.3m	49° 54' 30N., 6° 18' 48W.
1.8m	49° 53' 14N., 6° 21' 04W.

Drying height Position

1.6m	49° 58' 27N., 6° 18' 95W.
0.5m	49° 58' 16N., 6° 17' 22W.
0.7m	49° 58' 14N., 6° 19' 88W.
0.5m	49° 57' 53N., 6° 19' 04W.
0.2m	49° 57' 51N., 6° 15' 94W.
4.4m	49° 57' 47N., 6° 16' 25W.
0.7m	49° 57' 32N., 6° 15' 42W.
1.0m	49° 57' 24N., 6° 15' 40W.
0.8m	49° 56' 87N., 6° 16' 03W.
1.1m	49° 56' 81N., 6° 16' 12W.
0.3m	49° 56' 81N., 6° 17' 72W.
1.0m	49° 56' 64N., 6° 18' 31W.
0.9m	49° 56' 56N., 6° 21' 04W.
0.9m	49° 56' 55N., 6° 21' 99W.
1.2m	49° 56' 32N., 6° 22' 53W.
1.3m	49° 56' 28N., 6° 22' 34W.
0.6m	49° 56' 09N., 6° 21' 69W.
1.2m	49° 55' 83N., 6° 21' 57W.
0.3m	49° 55' 81N., 6° 22' 33W.
0.4m	49° 55' 73N., 6° 21' 58W.
0.3m	49° 55' 44N., 6° 20' 86W.
3.3m	49° 55' 29N., 6° 21' 76W.
0.5m	49° 54' 90N., 6° 16' 69W.
4.4m	49° 53' 56N., 6° 19' 53W.

- ~~3. Mariners are advised to navigate with caution in the area.~~
- ~~4. These changes will be included in the New Editions of Chart 34 and Chart 883 to be published early 2017. (ETRS89 Datum)~~

Charts affected — SC5603

L5093/16 ENGLAND — West Coast — Padstow — Buoy.

Source: Padstow Harbour Commissioners

Chart: SC5603.5 (panel A, Newquay to Padstow) ETRS89 DATUM

Amend light-buoy to, *Fl(2+1)R. 10s Middle Ground*

50° 32' .84N. , 4° 55' .96W.

Chart: SC5603-5 (panel C, Padstow) ETRS89 DATUM

Amend light-buoy to, *Fl(2+1)R.10s Middle Ground* 50° 32' .84N. , 4° 55' .96W.

L5291/16 ENGLAND — Isles of Scilly — Saint Mary's Sound — Light-beacons.

Source: Saint Mary's Harbour Master

Chart: SC5603-8 ETRS89 DATUM

Replace  Q(6)+LFl.15s, with  Fl.G.5s 49° 54' .40N. , 6° 19' .37W.

Chart: SC5603-10 ETRS89 DATUM

Replace  Q(6)+LFl.15s, with  Fl.G.5s 49° 54' .399N. , 6° 19' .371W.

L5646/16 ENGLAND — South Coast — Lizard Point S — Depths.

Source: mv Sunbeam and MMT UK

Chart: SC5603-2 (panel A, Falmouth to Penzance) ETRS89 DATUM


Insert depth, *10₂* (a) 49° 56' .87N. , 5° 13' .18W.

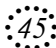
Delete depth, *13₁*, close W of: (a) above

L5981/16 ENGLAND — West Coast — Bann Shoal E — Submarine power cables.

Source: Wave Hub Limited

Chart: SC5603-1 (panel A, Lizard Point to Hartland Point) ETRS89 DATUM

Insert submarine power cable, , joining: 50° 20' .95N. , 5° 37' .11W.

( Obstrn)

50° 22' .33N. , 5° 37' .53W.

L6191/16 ENGLAND — South Coast — The Wrigglers NW — Buoy.

Source: Falmouth Harbour Commissioners Notice 24/16

Chart: SC5603-2 (panel A, Falmouth to Penzance) ETRS89 DATUM

Delete  *Fl(5)Y.20s* 50° 04' .75N. , 5° 02' .85W.

L6597/16 ENGLAND — Isles of Scilly — Saint Martin's N and NE, Crow Sound E and Seven Stones — Depths.

Source: British Government Survey

Note: This update is included in New Editions 34 and 883, published 16 March 2017.

Chart: SC5603·9 ETRS89 DATUM

Insert	depth, <i>16_s</i> , and extend 20m contour N to enclose	(a) 49° 59' ·07N. , 6° 17' ·74W.
	depth, <i>4_s</i> , enclosed by 5m contour	49° 59' ·01N. , 6° 17' ·79W.
	depth, <i>5_s</i> , and extend 10m contour N to enclose	(b) 49° 58' ·64N. , 6° 16' ·41W.
	depth, <i>15_s</i> , and extend 20m contour N to enclose	49° 58' ·55N. , 6° 15' ·95W.
	depth, <i>18_s</i> , enclosed by 20m contour	(c) 49° 58' ·23N. , 6° 15' ·10W.
	depth, <i>8_s</i> , enclosed by 10m contour	(d) 49° 56' ·15N. , 6° 15' ·19W.
Delete	depth, <i>15_s</i> , close SE of:	(a) above
	depth, <i>9_t</i> , close S of:	(b) above
	depth, <i>33</i> , close NW of:	(c) above
	depth, <i>12_s</i> , close NW of:	(d) above

Chart: SC5603·12 ETRS89 DATUM

Insert	depth, <i>5_s</i> , and extend 10m contour N to enclose	(a) 49° 58' ·636N. , 6° 16' ·406W.
	depth, <i>15_s</i> , enclosed by 20m contour	49° 58' ·550N. , 6° 15' ·951W.
	depth, <i>18_s</i> , enclosed by 20m contour	(b) 49° 58' ·231N. , 6° 15' ·097W.
	depth, <i>8_s</i> , enclosed by 10m contour	(c) 49° 56' ·147N. , 6° 15' ·192W.
Delete	depth, <i>9_t</i> , close S of:	(a) above
	depth, <i>33</i> , close NW of:	(b) above
	depth, <i>12_s</i> , close NW of:	(c) above

Chart: SC5603·14 ETRS89 DATUM

Insert	depth, <i>4_s</i> , and extend 5m contour N to enclose	(a) 49° 59' ·01N. , 6° 17' ·79W.
	depth, <i>5_s</i>	(b) 49° 58' ·64N. , 6° 16' ·41W.
Replace	depth, <i>21_s</i> , with seabed type, <i>R</i> , enclosed by 30m contour, with depth,	
	<i>18_s</i> , enclosed by 20m contour	50° 01' ·18N. , 6° 08' ·55W.
Delete	depth, <i>13₇</i> , close NW of:	(a) above
	depth, <i>7_s</i> , close W of:	(b) above

L204/17 ENGLAND — South Coast — Runnel Stone E, Lizard Point S, SE, W and NW and Mounts Bay — Depths. Wrecks.

Source: British Government Survey

Chart: SC5603·1 (Panel A, Lizard Point to Hartland Point) ETRS89 DATUM

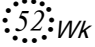
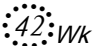
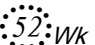
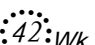
Insert	depth, 19 ₂ , enclosed by 20m contour	(a) 50° 02' ·79N. , 5° 26' ·05W.
	depth, 13 ₃	50° 01' ·56N. , 5° 17' ·57W.
		(b) 50° 00' ·28N. , 5° 35' ·15W.
		50° 01' ·19N. , 5° 31' ·09W.
Replace	depth, 17 ₆ , with depth, 16 ₁	49° 57' ·42N. , 5° 14' ·54W.
	depth, 13 ₁ , with depth, 8 ₇ , enclosed by 10m contour	49° 56' ·86N. , 5° 13' ·21W.
	depth, 10 ₄ , with depth, 9 ₇ , enclosed by 10m contour	49° 58' ·40N. , 5° 16' ·05W.
Delete	depth, 20 ₉ , close E of:	(a) above
	depth, 56, close NW of:	(b) above

Chart: SC5603·2 (Panel A, Falmouth to Penzance) ETRS89 DATUM

Insert	depth, 19 ₂ , enclosed by 20m contour	(a) 50° 02' ·79N. , 5° 26' ·05W.
	depth, 13 ₃	(b) 50° 01' ·56N. , 5° 17' ·57W.
	depth, 8 ₇ , enclosed by 10m contour	(c) 49° 56' ·86N. , 5° 13' ·21W.
		50° 00' ·27N. , 5° 35' ·15W.
		50° 01' ·19N. , 5° 31' ·09W.
	depth, 16 ₅	(d) 49° 58' ·021N. , 5° 15' ·712W.
	depth, 18 ₉ , enclosed by 20m contour	49° 57' ·747N. , 5° 15' ·644W.
	depth, 17 ₈ , enclosed by 20m contour	49° 57' ·247N. , 5° 14' ·598W.
	depth, 16 ₁	(e) 49° 57' ·415N. , 5° 14' ·539W.
	depth, 13 ₁ , enclosed by 15m contour	49° 56' ·855N. , 5° 13' ·472W.
	depth, 18 ₄ , and extend 20m contour SE to enclose	(f) 49° 56' ·596N. , 5° 13' ·215W.
	depth, 8 ₇ , enclosed by 10m contour	49° 56' ·856N. , 5° 13' ·215W.
	depth, 13 ₂ , enclosed by 15m contour	(g) 49° 56' ·818N. , 5° 12' ·759W.
	depth, 14 ₇ , enclosed by 15m contour	49° 56' ·831N. , 5° 12' ·492W.
	depth, 8 ₇	(h) 49° 56' ·960N. , 5° 12' ·319W.
	depth, 22, and extend 30m contour SE to enclose	(i) 49° 56' ·531N. , 5° 12' ·229W.
Replace	depth, 10 ₄ , with depth, 9 ₇ , enclosed by 10m contour	49° 58' ·40N. , 5° 16' ·05W.
	depth, 17 ₆ , with depth, 16 ₁	49° 57' ·42N. , 5° 14' ·54W.
Delete	depth, 20 ₉ , close E of:	(a) above
	depth, 15, close SW of:	(b) above
	depth, 10 ₂ , close NE of:	(c) above
	depth, 18 ₇ , close W of:	(d) above
	depth, 17 ₆ , close SE of:	(e) above
	depth, 20, close NW of:	(f) above
	depth, 20 ₂ , close W of:	(g) above

depth, 9₇, close NE of: (h) above
 depth, 24, close NW of: (i) above

Chart: SC5603-3 (Panel A, Penzance to Saint Ives) ETRS89 DATUM

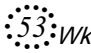
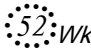
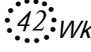
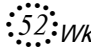
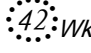
Insert depth, 28₅, enclosed by 30m contour (a) 50° 01' ·11N. , 5° 38' ·37W.
 50° 01' ·63N. , 5° 36' ·68W.
 (b) 50° 00' ·49N. , 5° 36' ·78W.
 50° 00' ·27N. , 5° 35' ·15W.
 50° 01' ·19N. , 5° 31' ·09W.
 Insert depth, 12₅, and extend 15m contour SE to enclose 50° 01' ·363N. , 5° 40' ·178W.
 Delete depth, 31, close E of: (a) above
 depth, 60, close S of: (b) above

Chart: SC5603-3 (Panel C, Runnel Stone) ETRS89 DATUM

Insert depth, 12₅, and extend 15m contour SE to enclose 50° 01' ·363N. , 5° 40' ·178W.

Chart: SC5603-15 (Panel A, Falmouth to Isles of Scilly) ETRS89 DATUM

Insert depth, 8₇, enclosed by 10m contour (a) 49° 56' ·9N. , 5° 13' ·2W.
 50° 00' ·3N. , 5° 35' ·1W.
 50° 01' ·2N. , 5° 31' ·1W.
 Replace depth, 20₉, with depth, 19₂, enclosed by 20m contour 50° 02' ·8N. , 5° 26' ·0W.
 depth, 10₄, with depth, 9₇, enclosed by 10m contour 49° 58' ·4N. , 5° 16' ·0W.
 Delete depth, 13₁, close N of: (a) above

Temporary/Preliminary NMs

L208(P)/17 ENGLAND — South Coast — Mounts Bay — Depths.

Source: British Government Survey

1. Depths less than charted exist in Mounts Bay. The most significant depths are as follows:

<i>Depth</i>	<i>Position</i>
25·5m	50° 02' ·268N. , 5° 43' ·424W.
16·1m	50° 05' ·676N. , 5° 31' ·098W.
9·8m	50° 06' ·869N. , 5° 29' ·963W.
7·0m	50° 06' ·917N. , 5° 29' ·921W.
19·3m	50° 06' ·162N. , 5° 29' ·390W.
11·5m	50° 05' ·336N. , 5° 27' ·238W.
18·6m	50° 02' ·383N. , 5° 18' ·534W.
29·5m	49° 59' ·050N. , 5° 17' ·720W.

10·6m	50° 02' ·052N. , 5° 17' ·537W.
15·0m	49° 58' ·059N. , 5° 16' ·000W.
19·5m	49° 57' ·648N. , 5° 15' ·281W.
20·4m	49° 57' ·731N. , 5° 14' ·582W.
29·5m	49° 56' ·847N. , 5° 14' ·532W.
17·3m	49° 56' ·887N. , 5° 13' ·578W.
16·2m	49° 56' ·937N. , 5° 13' ·455W.
13·9m	49° 56' ·800N. , 5° 13' ·313W.
12·5m	49° 56' ·794N. , 5° 13' ·197W.
13·1m	49° 56' ·889N. , 5° 12' ·865W.
23·0m	49° 56' ·390N. , 5° 12' ·716W.
17·2m	49° 56' ·875N. , 5° 12' ·235W.

2. Mariners are advised to navigate with caution in the area.
3. These changes will be included in the next New Editions of Charts 2345, 777 and 1148.(ETRS89 DATUM)

Charts affected – SC5603

L234/17 ENGLAND — Isles of Scilly — Round Island W and Bryher W — Rocks. Depth.

Source: Mr David Mawer

Chart: SC5603·9 ETRS89 DATUM

Replace depth, 8₂, with  49° 56' ·83N. , 6° 22' ·63W.

Notices to Mariners - Weekly Edition 05/2017 English Channel, Western Entrance. — Chart 2655 — New Edition Announcement.

Charts SC5603·15 WGS84 DATUM

The following changes were published in the new edition of chart 2655, which is the source chart for the above folio sheet:

Includes changes to reporting limits and general updating throughout. Mariners should therefore navigate with caution on sheet SC5603·15 and be aware that any subsequent Notices to Mariners applied to this sheet are issued for information only.

These changes will be included in the next new edition of SC5603.

Notices to Mariners - Weekly Edition 06/2017 England - South Coast, Plans on the South Coast of Cornwall.

— **Chart 147 — New Edition Announcement.**

Charts SC5603·1 and SC5603·6 WGS84 DATUM

The following changes were published in the new edition of chart 147, which is the source chart for the above folio sheets:

Includes changes to depths from the latest British Government surveys. Mariners should therefore navigate with caution on sheets SC5603·1 and SC5603·6 and be aware that any subsequent Notices to Mariners applied to these sheets are issued for information only.

These changes will be included in the next new edition of SC5603.

Notices to Mariners - Weekly Edition 13/2017 England - West Coast, Isles of Scilly, Saint Mary's and the Principal Off-Islands.

— **Chart 883 — New Edition Announcement.**

Charts SC5603·10, SC5603·11 and SC5603·12 WGS84 DATUM

The following changes were published in the new edition of chart 883, which is the source chart for the above folio sheets:

Includes changes to depths from the latest British Government surveys. Mariners should therefore navigate with caution on sheets SC5603·10, SC5603·11 and SC5603·12 and be aware that any subsequent Notices to Mariners applied to these sheets are issued for information only.

These changes will be included in the next new edition of SC5603.

Notices to Mariners - Weekly Edition 14/2017 England - West Coast, Isles of Scilly.

— **Chart 34 — New Edition Announcement.**

Charts SC5603·8 and SC5603·9 WGS84 DATUM

The following changes were published in the new edition of chart 34, which is the source chart for the above folio sheets:

Includes changes to depths from the latest British Government surveys. Mariners should therefore navigate with caution on sheets SC5603·8 and SC5603·9 and be aware that any subsequent Notices to Mariners applied to these sheets are issued for information only.

These changes will be included in the next new edition of SC5603.

L1631/17 ENGLAND — South Coast — Falmouth Inner Harbour and Penryn River — Depths.

Source: Falmouth Harbour Authority

Chart: SC5603-13 (Panel A, Falmouth Harbour) ETRS89 DATUM

Insert depth, 1_s, and extend 2m contour NE to enclose 50° 09' ·690N. , 5° 04' ·292W.

depth, 1_s, and extend 2m contour SW to enclose 50° 09' ·800N. , 5° 04' ·364W.

Notices to Mariners - Weekly Edition 18/2017 England - West Coast, Isles of Scilly to Land's End.

— Chart 1148 — New Edition Announcement.

Charts SC5603-3 and SC5603-14 WGS84 DATUM

The following changes were published in the new edition of chart 1148, which is the source chart for the above folio sheets:

Includes significant safety-related information as follows: changes to depths from the latest British Government surveys. Mariners should therefore navigate with caution on sheets SC5603-3 and SC5603-14 and be aware that any subsequent Notices to Mariners applied to these sheets are issued for information only.

These changes will be included in the next new edition of SC5603.

L2735/17 ENGLAND — South West Coast — Seven Stones NE — Submarine power cables.

Source: Global Marine Systems

Chart: SC5603-15 (Panel A, Falmouth to Isles of Scilly) ETRS89 DATUM

Insert submarine power cable,  , joining: (a) 50° 03' ·0N. , 6° 03' ·6W.

(existing cable)

50° 03' ·9N. , 6° 00' ·3W.

50° 04' ·6N. , 5° 53' ·5W.

50° 05' ·1N. , 5° 51' ·7W.

(b) 50° 05' ·3N. , 5° 50' ·8W.

(existing cable)

Delete former submarine power cable,  , joining: (a) above

(b) above

**L3092/17 ENGLAND — South Coast — Lizard Point SE and SW — Legends.
Notes. Wreck.**

Source: British Government

Chart: SC5603·1 (Panel A, Lizard Point to Hartland Point) ETRS89 DATUM

Insert legend, *Military Wreck (see Note)*, centred on: 49° 56' ·95N. , 5° 18' ·93W.

Chart: SC5603·2 (Panel A, Falmouth to Penzance) ETRS89 DATUM

Insert legend, *Military Wreck (see Note)*, centred on: 49° 56' ·57N. , 5° 21' ·01W.

**Notices to Mariners - Weekly Edition 28/2017 England, South Coast, Plans in
South West Cornwall.
— Chart 2345 — New Edition Announcement.**

Charts SC5603·2, SC5603·3, SC5603·6 and SC5603·7 WGS84 DATUM

The following changes were published in the new edition of chart 2345, which is the source chart for the above folio sheets:

Includes changes to depths from the latest British Government surveys. Mariners should therefore navigate with caution on sheets SC5603·2, SC5603·3, SC5603·6 and SC5603·7 and be aware that any subsequent Notices to Mariners applied to these sheets are issued for information only.

These changes will be included in the next new edition of SC5603.

L3241/17 ENGLAND — West Coast — River Camel — Light. Buoy.

Source: Padstow Harbour Commissioners

Chart: SC5603·5 (Panel A, Newquay to Padstow) ETRS89 DATUM

Insert  *FI(2)R.5s Brae Spit* 50° 33' ·20N. , 4° 56' ·08W.

★ *FI.Y.5s* 50° 32' ·15N. , 4° 55' ·32W.

Chart: SC5603·5 (Panel C, Padstow) ETRS89 DATUM

Insert  *FI(2)R.5s Brae Spit* 50° 33' ·20N. , 4° 56' ·08W.

L3498/17 ENGLAND — South Coast — Falmouth Inner Harbour — Light. Buoy.

Source: A&P Port Notices 12-13/17

Chart: SC5603·13 (Panel A, Falmouth Harbour) ETRS89 DATUM

Replace

★ Fl.R.2s2m, with

 Fl.R.2s

50° 09' ·335N. , 5° 03' ·565W.

L3854/17 ENGLAND — West Coast — Newquay NW and Trevoise Head N — Wrecks. Notes. Legends.

Source: British Government

Chart: SC5603·1 (Panel A, Lizard Point to Hartland Point) ETRS89 DATUM

Insert legend, *Military Wreck (see Note)*, centred on:

50° 29' ·77N. , 5° 27' ·27W.

50° 40' ·60N. , 5° 03' ·23W.

Notices to Mariners - Weekly Edition 36/2017 International Chart Series, England - South Coast, Falmouth to Truro. — Chart 32 — New Edition Announcement.

Chart SC5603·13 WGS84 DATUM

The following changes were published in the new edition of chart 32, which is the source chart for the above folio sheet:

Includes changes to depths from the latest port authority surveys. Mariners should therefore navigate with caution on sheet SC5603·13 and be aware that any subsequent Notices to Mariners applied to this sheet are issued for information only.

These changes will be included in the next new edition of SC5603.

L4914/17 ENGLAND — Isles of Scilly — Saint Helen's to Maiden Bower — Depths.

Source: mv Seabeam

Chart: SC5603·9 ETRS89 DATUM

Insert depth, 28, and extend 50m contour N to enclose

49° 58' ·59N. , 6° 20' ·50W.

depth, 36, enclosed by 50m contour

(a) 49° 57' ·96N. , 6° 22' ·34W.

depth, 38, and extend 50m contour N to enclose

49° 57' ·68N. , 6° 22' ·92W.

depth, 29~~s~~, and extend 50m contour N to enclose

(b) 49° 57' ·05N. , 6° 23' ·80W.

depth, 35, enclosed by 50m contour

49° 56' ·35N. , 6° 24' ·31W.

Delete depth, 68, close W of:

(a) above

depth, 47, close SW of:

(b) above
