

**Admiralty Leisure Folio**  
**SC5608 Bristol Channel**

The Notices to Mariners (NMs) listed below apply to the latest edition of SC5608 (6<sup>th</sup> Edition) published on 24<sup>th</sup> November 2016.

---

Temporary/Preliminary NMs

~~L2385(T)/16 WALES — South Coast — Approaches to Porthcawl —  
Searweather Sands N — Fog signal.~~

Source: E.ON

~~1. The fog signal, Horn Mo(U)30s, in position 51° 28' 49N., 3° 50' 92W. is reported to be unreliable until October 2016. (ETRS89 Datum)~~

---

**~~Charts affected — SC5608~~**

**L5796/16 ENGLAND — West Coast — King Road — Depths.**

Source: Bristol Port Company

**Chart: SC5608·17 (panel A, Avonmouth to Severn Bridge) ETRS89 DATUM**

Replace depth, 7<sub>7</sub>, with depth, 6<sub>7</sub> 51° 30' 44N. , 2° 43' 93W.

**Chart: SC5608·19 ETRS89 DATUM**

Insert	depth, 1 <sub>9</sub> , enclosed by 2m contour	51° 30' 337N. , 2° 45' 884W.
	depth, 4 <sub>8</sub> , enclosed by 5m contour	(a) 51° 30' 237N. , 2° 45' 136W.
	depth, 4 <sub>1</sub> , enclosed by 5m contour	(b) 51° 30' 281N. , 2° 44' 897W.
	depth, 1 <sub>7</sub> , enclosed by 2m contour	(c) 51° 30' 378N. , 2° 44' 842W.
	depth, 4 <sub>4</sub> , enclosed by 5m contour	(d) 51° 30' 342N. , 2° 44' 732W.
	depth, 4 <sub>7</sub> , enclosed by 5m contour	(e) 51° 30' 402N. , 2° 44' 577W.
	depth, 5 <sub>6</sub>	(f) 51° 30' 315N. , 2° 44' 605W.
	depth, 9 <sub>9</sub> , enclosed by 10m contour	(g) 51° 30' 225N. , 2° 44' 746W.
	depth, 6 <sub>9</sub>	(h) 51° 30' 141N. , 2° 44' 625W.
		(i) 51° 30' 187N. , 2° 44' 486W.
	depth, 8 <sub>2</sub>	(j) 51° 30' 234N. , 2° 44' 419W.
	depth, 6 <sub>7</sub>	(k) 51° 30' 441N. , 2° 43' 927W.
Delete	depth, 5 <sub>7</sub> , close W of:	(a) above
	depth, 5 <sub>9</sub> , close SW of:	(b) above
	depth, 4 <sub>7</sub> , and associated 5m contour, close SW of:	(c) above
	depth, 8 <sub>4</sub> , close NE of:	(d) above
	depth, 7 <sub>5</sub> , close NE of:	(e) above

depth, $\delta_1$ , close S of:	(f) above
depth, $12_1$ , close NE of:	(g) above
depth, $\delta_3$ , close SW of:	(h) above
depth, $\delta_1$ , close NE of:	(i) above
depth, $\delta_7$ , close SE of:	(j) above
depth, $\delta$ , close E of:	(k) above

---

**L5958/16 WALES — South Coast — Swansea Bay — Buoy. Dredged area.**  
Source: Trinity House and ABP South Wales

**Chart: SC5608·3 ETRS89 DATUM**

Amend light-buoy to,  $Q(6)+LFl.15s$  51° 33' ·35N. , 3° 52' ·23W.

**Chart: SC5608·7 ETRS89 DATUM**

Amend light-buoy to,  $Q(6)+LFl.15s$  51° 33' ·35N. , 3° 52' ·23W.  
dredged depth to,  $1.0m$  (2016), centred on: 51° 35' ·18N. , 3° 56' ·37W.

---

**L6490/16 ENGLAND — Bristol Channel — Minehead — Madbrain Sands — Restricted area. Legend.**

Source: Historic England

**Chart: SC5608·8 (Panel E, England Minehead) ETRS89 DATUM**

Insert circular limit of restricted area, radius 35m,  $\text{TTTT}$ , centred on: (a) 51° 12' ·62N. , 3° 27' ·19W.  
legend, *Historic Wreck (see Note)*, close E of: (a) above

---

**L6589/16 ENGLAND — Bristol Channel — Westward Ho! Sands — Restricted areas. Legend. Wrecks. Note.**



Source: Historic England

**Chart: SC5608·4 (Panel A, Hartland Point to Lundy and Ilfracombe) ETRS89 DATUM**

Insert circular limit of restricted area, radius 35m,  $\text{TTTT}$ , centred on: (a) 51° 02' ·86N. , 4° 14' ·22W.  
(b) 51° 02' ·75N. , 4° 14' ·35W.  
legend, *Historic Wrecks (see Note)*, centred on: 51° 02' ·79N. , 4° 14' ·23W.  
Delete  $\odot Wk$ , drying height,  $\underline{2}_2$ , close NW of: (a) above  
 $\odot Wk$ , drying height,  $\underline{1}_a$ , close W of: (b) above

**Chart: SC5608·5 (Panel A, Barnstaple and Bideford) ETRS89 DATUM**

Insert circular limit of restricted area, radius 35m,  $\text{TTTT}$ , centred on: (a)  $51^{\circ} 02' \cdot 86\text{N}$ . ,  $4^{\circ} 14' \cdot 22\text{W}$ .  
 (b)  $51^{\circ} 02' \cdot 75\text{N}$ . ,  $4^{\circ} 14' \cdot 35\text{W}$ .  
 legend, *Historic Wrecks (see Note)*, centred on:  $51^{\circ} 02' \cdot 79\text{N}$ . ,  $4^{\circ} 14' \cdot 23\text{W}$ .

Delete   $Wk$ , drying height,  $\underline{2}_s$ , close NW of: (a) above  
  $Wk$ , drying height,  $\underline{1}_s$ , close W of: (b) above

### **L6611/16 ENGLAND — West Coast — King Road — Depths.**

Source: Bristol Port Company

#### **Chart: SC5608-15 (Panel B, Continuation to Avonmouth) ETRS89 DATUM**

Insert depth,  $0_s$  (a)  $51^{\circ} 30' \cdot 43\text{N}$ . ,  $2^{\circ} 43' \cdot 26\text{W}$ .

Delete depth,  $3_s$ , close NW of: (a) above

#### **Chart: SC5608-17 (Panel A, Avonmouth to Severn Bridge) ETRS89 DATUM**

Insert depth,  $0_s$  (a)  $51^{\circ} 30' \cdot 43\text{N}$ . ,  $2^{\circ} 43' \cdot 26\text{W}$ .

Delete depth,  $3_s$ , close NW of: (a) above

#### **Chart: SC5608-19 ETRS89 DATUM**

Insert depth,  $0_s$   $51^{\circ} 30' \cdot 434\text{N}$ . ,  $2^{\circ} 43' \cdot 260\text{W}$ .

### Temporary/Preliminary NMs

### **L186(T)/17 ENGLAND — Bristol Channel — Culver Sand W to Newport Deep — Scientific instruments. Buoyage.**

Source: Titan Environmental Surveys Ltd and ABP South Wales

1. Until December 2017, scientific instruments, marked by special light-buoys, *Fl(5)Y.20s*, exist in the following positions:

$51^{\circ} 17' \cdot 30\text{N}$ . ,  $3^{\circ} 25' \cdot 94\text{W}$ .

$51^{\circ} 19' \cdot 23\text{N}$ . ,  $3^{\circ} 13' \cdot 36\text{W}$ .

$51^{\circ} 20' \cdot 69\text{N}$ . ,  $3^{\circ} 04' \cdot 82\text{W}$ .

$51^{\circ} 24' \cdot 80\text{N}$ . ,  $3^{\circ} 06' \cdot 34\text{W}$ .

$51^{\circ} 25' \cdot 36\text{N}$ . ,  $3^{\circ} 06' \cdot 44\text{W}$ .

$51^{\circ} 29' \cdot 62\text{N}$ . ,  $2^{\circ} 58' \cdot 50\text{W}$ .

2. (WGS84 DATUM)

### **Charts affected – SC5608**

**L211/17 WALES — South Coast — Swansea Bay — Scarweather Sands N — Light.**

Source: E.ON

*Note:* Former Notice 2385(T)/16 is cancelled.

**Chart: SC5608·3 ETRS89 DATUM**

Delete      ★ Mo(U)15s14m10M Mast (85) (R Lt)      51° 28' ·49N. , 3° 50' ·92W.

**Chart: SC5608·10 ETRS89 DATUM**

Delete      ★ Mo(U)15s14m10M Horn Mo(U)30s Mast (85) (R Lts) and  
associated circular white arc      51° 28' ·49N. , 3° 50' ·92W.

---

**L532/17 ENGLAND — West Coast — Port of Bristol — King Road — Depth.**

Source: Bristol Port Company

**Chart: SC5608·19 ETRS89 DATUM**

Insert      depth, 5, enclosed by 5m contour      51° 30' ·784N. , 2° 43' ·678W.

---

**Notices to Mariners - Weekly Edition 06/2017 British Isles, Western Approaches to Saint George's Channel and Bristol Channel. — Chart 1123 — New Edition Announcement.**

**Chart SC5608·2 WGS84 DATUM**

The following changes were published in the new edition of chart 1123, which is the source chart for the above folio sheet:

*Includes general updates throughout. Mariners should therefore navigate with caution on sheet SC5608·2 and be aware that any subsequent Notices to Mariners applied to this sheet are issued for information only.*

These changes will be included in the next new edition of SC5608.

---

**L1752/17 ENGLAND — West Coast — Hinkley Point NW — Works.**

Source: Hinkley Point C Harbour Authority Notice 2/17

**Chart: SC5608·13 ETRS89 DATUM**

Insert      legend, Works in progress (2017), centred on:      51° 12' ·93N. , 3° 09' ·56W.

**L1891/17 WALES — South Coast — Hugo Bank SE — Depths. Drying heights.**  
Source: Trinity House

**Chart: SC5608·10 ETRS89 DATUM**

Insert	depth, $4_r$ , enclosed by 5m contour	(a) 51° 28' ·42N. , 3° 47' ·54W.
	drying height, $Q_g$ , enclosed by 0m low water line	(b) 51° 28' ·50N. , 3° 47' ·38W.
	drying height, $Z$ , enclosed by 0m low water line	(c) 51° 28' ·45N. , 3° 47' ·13W.
	depth, $7_g$ , enclosed by 10m contour	51° 28' ·35N. , 3° 47' ·01W.
	depth, $4_g$ , enclosed by 5m contour	51° 28' ·49N. , 3° 46' ·76W.
Delete	depth, $6_g$ , close W of:	(a) above
	depth, $0_r$ , close N of:	(b) above
	depth, $10_g$ , close S of:	(c) above

---

**L2031/17 ENGLAND — Bristol Channel — River Parrett — Light-beacon.**  
Source: Port of Bridgwater Notice 3/17

**Chart: SC5608·13 ETRS89 DATUM**

Amend	range of light to, 4M	51° 11' ·35N. , 3° 01' ·98W.
-------	-----------------------	------------------------------

---

**L2059/17 WALES — South Coast — Newport — Liberty Steel Berth — Lights.**  
Source: ABP South Wales Notice 7/17


**Chart: SC5608·17 (Panel B, Newport) ETRS89 DATUM**

Amend	light to, F.Bu.5M	51° 33' ·32N. , 2° 57' ·89W.
		51° 33' ·32N. , 2° 57' ·91W.

---

**L2456/17 WALES — South Coast — Hugo Bank — Buoy.**  
Source: Trinity House

**Chart: SC5608·3 ETRS89 DATUM**

Delete	 <i>Q.R Hugo</i>	51° 28' ·63N. , 3° 48' ·07W.
--------	---	------------------------------

**Chart: SC5608·10 ETRS89 DATUM**

Delete	 <i>Q.R Hugo</i>	51° 28' ·55N. , 3° 48' ·03W.
--------	---	------------------------------

---

**L2593/17 WALES — South Coast — Approaches to Port Talbot — Automatic Identification System.**

Source: ABP South Wales

**Chart: SC5608·7 ETRS89 DATUM**

Insert Automatic Identification System, *A/S*, at South Inner light-buoy 51° 34' ·09N. , 3° 50' ·16W.

---

**L2770/17 ENGLAND — West Coast — Severn Bar N and SW — Depths.**

Source: Bristol Port Company

**Chart: SC5608·15 (Panel A, Bristol Deep to Portishead) ETRS89 DATUM**

Insert drying height, *1<sub>s</sub>*, enclosed by 0m low water line 51° 31' ·14N. , 2° 45' ·40W.

drying height, *0<sub>s</sub>*, enclosed by 0m low water line 51° 30' ·66N. , 2° 46' ·32W.

**Chart: SC5608·15 (Panel B, Continuation to Aronmouth) ETRS89 DATUM**

Insert drying height, *1<sub>s</sub>*, enclosed by 0m low water line 51° 31' ·14N. , 2° 45' ·40W.

drying height, *0<sub>s</sub>*, enclosed by 0m low water line 51° 30' ·66N. , 2° 46' ·32W.

**Chart: SC5608·17 (Panel A, Avonmouth to Severn Bridge) ETRS89 DATUM**

Insert depth, *5<sub>7</sub>* (a) 51° 31' ·75N. , 2° 43' ·11W.

Delete depth, *7<sub>7</sub>*, close NE of: (a) above

**Chart: SC5608·19 ETRS89 DATUM**

Insert drying height, *1<sub>s</sub>*, enclosed by 0m low water line (a) 51° 31' ·144N. , 2° 45' ·398W.

drying height, *0<sub>s</sub>*, enclosed by 0m low water line (b) 51° 30' ·939N. , 2° 45' ·792W.

drying height, *1<sub>1</sub>*, enclosed by 0m low water line 51° 30' ·793N. , 2° 46' ·278W.

depth, *0<sub>7</sub>*, enclosed by 2m contour (c) 51° 30' ·629N. , 2° 46' ·228W.

drying height, *2<sub>8</sub>* 51° 30' ·680N. , 2° 44' ·543W.

Delete depth, *1*, close NW of: (a) above

depth, *1<sub>8</sub>*, close NE of: (b) above

depth, *3<sub>5</sub>*, close NE of: (c) above

---

**L3241/17 ENGLAND — West Coast — River Camel — Light. Buoy.**

Source: Padstow Harbour Commissioners

**Chart: SC5608·5 (Panel B, Padstow) ETRS89 DATUM**

Insert  *FI(2)R.5s Brae Spit* 50° 33' ·20N. , 4° 56' ·08W.

★ *FI.Y.5s* 50° 32' ·15N. , 4° 55' ·32W.

---

**L3558/17 ENGLAND — West Coast — Approaches to Port of Bristol — Denny Shoal — Depths.**

Source: Bristol Port Company

**Chart: SC5608·19 ETRS89 DATUM**

Insert depth,  $Z_8$ , enclosed by 5m contour 51° 30' ·492N. , 2° 44' ·471W.  
depth,  $O_3$ , enclosed by 2m contour 51° 30' ·452N. , 2° 44' ·790W.  
depth,  $1_4$ , and extend 2m contour S to enclose (a) 51° 30' ·439N. , 2° 45' ·131W.  
Delete depth,  $Z_6$ , close N of: (a) above

---

**L3753/17 ENGLAND — West Coast — Middle Grounds SE — Wreck.**

Source: Bristol Port Company

**Chart: SC5608·15 (Panel A, Bristol Deep to Portishead) ETRS89 DATUM**

Insert  *Wk* 51° 28' ·93N. , 2° 52' ·07W.

---

**L3854/17 ENGLAND — West Coast — Newquay NW and Trevoise Head N — Wrecks. Notes. Legends.**

Source: British Government

**Chart: SC5608·2 (Panel A, Padstow to Saint Ann's Head) ETRS89 DATUM**

Insert legend, *Military Wreck (see Note)*, centred on: 50° 40' ·16N. , 5° 01' ·52W.

---

Temporary/Preliminary NMs

**L3895(T)/17 ENGLAND — Bristol Channel — North-West Patches — Single Point Mooring.**

Source: Hinkley Point C Harbour Authority Notice 14/17

1. A single point mooring buoy, *Fl.Y.2s*, has been established in position 51° 14' ·43N. , 3° 09' ·38W.
2. Mariners are advised to navigate with caution in the area.(ETRS89 DATUM)

**Charts affected – SC5608**

---

**Notices to Mariners - Weekly Edition 36/2017 International Chart Series,  
England -West Coast, Port of Bristol.  
— Chart 1859 — New Edition Announcement.**

Charts SC5608·18 and SC5608·19 WGS84 DATUM

The following changes were published in the new edition of chart 1859, which is the source chart for the above folio sheets:

*Includes changes to depths from the latest Bristol Port Authority Surveys. Mariners should therefore navigate with caution on sheets SC5608·18 and SC5608·19 and be aware that any subsequent Notices to Mariners applied to these sheets are issued for information only.*

These changes will be included in the next new edition of SC5608.

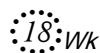
---

**L4218/17 WALES — South Coast — Approaches to Porthcawl — Wreck.**

Source: mv Titan Endeavour

**Chart: SC5608·3 ETRS89 DATUM**

Insert



51° 27' ·32N. , 3° 53' ·43W.

---

**L4507/17 ENGLAND — Bristol Channel — River Taw — Broad Sands —  
Drying heights. Depth.**

Source: Shoreline Surveys Limited

**Chart: SC5608·5 (Panel A, Barnstaple and Bideford) ETRS89 DATUM**

Insert drying height,  $Q_2$ , enclosed by 0m low water line (a) 51° 04' ·21N. , 4° 10' ·74W.  
drying height,  $Q_2$ , and extend 0m low water line SE to enclose 51° 04' ·47N. , 4° 10' ·34W.  
Delete depth,  $O_6$ , close S of: (a) above

---

**L5183/17 ENGLAND — West Coast — King Road — Denny Shoal SW and SE  
— Depths.**

Source: Bristol Port Company

**Chart: SC5608·15 (Panel A, Bristol Deep to Portishead) ETRS89 DATUM**

Insert depth,  $1_8$ , enclosed by 2m contour 51° 30' ·35N. , 2° 46' ·18W.

**Chart: SC5608·15 (Panel B, Continuation to Avonmouth) ETRS89 DATUM**

Insert depth,  $1_8$ , enclosed by 2m contour 51° 30' ·35N. , 2° 46' ·18W.  
depth,  $4_9$ , and extend 5m contour SE to enclose 51° 30' ·41N. , 2° 44' ·41W.

**Chart: SC5608·19 ETRS89 DATUM**

Insert depth,  $1_8$ , enclosed by 2m contour 51° 30' ·351N. , 2° 46' ·180W.  
depth,  $5_5$  (a) 51° 30' ·315N. , 2° 44' ·667W.



	depth, $4_9$ , and extend 5m contour SE to enclose	(b) 51° 30' ·406N. , 2° 44' ·409W.
Delete	depth, $6_9$ , close W of:	(a) above
	depth, $6_4$ , close NW of:	(b) above

---

**L5371/17 WALES — South Coast — Approaches to Porthcawl — Depths.**  
Source: mv Titan Endeavour

**Chart: SC5608·10 ETRS89 DATUM**

Insert	depth, $0_3$ , and extend 2m contour N to enclose	51° 28' ·37N. , 3° 49' ·07W.
	depth, $1_5$ , enclosed by 2m contour	51° 28' ·36N. , 3° 48' ·76W.

---

**L5418/17 ENGLAND — Bristol Channel — Bristol Deep — Depths.**  
Source: Bristol Port Company

**Chart: SC5608·15 (Panel A, Bristol Deep to Portishead) ETRS89 DATUM**

Insert	depth, $10$ , and extend 10m contour N to enclose	(a) 51° 27' ·31N. , 2° 56' ·45W.
	depth, $9_9$ , enclosed by 10m contour	(b) 51° 28' ·53N. , 2° 52' ·48W.
Replace	depth, $11_1$ , with depth, $10_6$	51° 27' ·57N. , 2° 53' ·83W.
Delete	depth, $12$ , close N of:	(a) above
	depth, $11_3$ , close NW of:	(b) above

---

**L5434/17 ENGLAND — West Coast — River Avon — Tongue Head — Drying heights.**

Source: Bristol Port Company

**Chart: SC5608·18 (Panel B, River Avon, Sea Mills Creek to Cumberland Basin) ETRS89 DATUM**

Insert	drying height, $2_4$	(a) 51° 26' ·964N. , 2° 37' ·480W.
Replace	drying height, $0_9$ , with drying height, $2_5$	51° 26' ·997N. , 2° 37' ·507W.
	drying height $1_2$ , with drying height, $2$	51° 26' ·986N. , 2° 37' ·481W.
Delete	drying height, $0_7$ , close SE of:	(a) above

**Chart: SC5608·18 (Panel C, Bristol City Docks) ETRS89 DATUM**

Insert	drying height, $2_4$	(a) 51° 26' ·964N. , 2° 37' ·480W.
Replace	drying height $1_2$ , with drying height, $2$	51° 26' ·986N. , 2° 37' ·481W.
Delete	drying height, $0_7$ , close SE of:	(a) above

---

**L5710/17 ENGLAND — Bristol Channel — Burnham-on-Sea — Leading lines.  
Legend.**

Source: Port of Bridgwater Notice 10/17

**Chart: SC5608·13 ETRS89 DATUM**

Insert leading line, pecked line for 2880m, extending in direction 297°,  
from: (a) 51° 14' ·39N. , 2° 59' ·93W.  
legend, 117°, seaward end of: (a) above  
Delete leading line, pecked line, and associated legend, 112°, extending  
in direction 292°, from: (a) above

---

**L208/18 WALES — South Coast — Swansea Bay — Buoyage.**

Source: ABP South Wales Notice 42/17

**Chart: SC5608·3 ETRS89 DATUM**

Delete  FI(5)Y.20s 51° 34' ·50N. , 3° 54' ·25W.  
51° 31' ·02N. , 3° 50' ·89W.

**Chart: SC5608·7 ETRS89 DATUM**

Delete  FI(5)Y.20s 51° 34' ·60N. , 3° 57' ·15W.  
51° 34' ·50N. , 3° 54' ·25W.

**Chart: SC5608·10 ETRS89 DATUM**

Delete  FI(5)Y.20s 51° 31' ·02N. , 3° 50' ·89W.  
51° 28' ·61N. , 3° 50' ·91W.

---

**L375/18 ENGLAND — West Coast — Severn Estuary — Slimeroad Sand —  
Legend.**

Source: Gloucester Harbour Trustees Notice 3/17

**Chart: SC5608·20 (Panel A, Severn Bridge to Sharpness) ETRS89 DATUM**

Insert legend, *Changing Depths (see Note)*, centred on: 51° 37' ·37N. , 2° 38' ·68W.

---

**L420/18 WALES — South Coast — Scarweather Sands — Drying heights.**

Source: mv Titan Endeavour and UKHO

**Chart: SC5608·10 ETRS89 DATUM**

Insert	drying height, $\underline{2}_5$	51° 28' ·05N. , 3° 50' ·13W.
	drying height, $\underline{2}_2$	51° 28' ·27N. , 3° 49' ·26W.

**L430/18 WALES — South Coast — Newport — Lysaghts Wharf — Lights.**

Source: ABP South Wales Notice 45/17

**Chart: SC5608·17 (Panel B, Wales Newport) ETRS89 DATUM**

Delete	★ 2F.G (vert)	(a) 51° 34' ·45N. , 2° 58' ·48W.
	★ 2F.G (vert), close SW of:	(a) above

**L673/18 ENGLAND — West Coast — King Road — Depths.**

Source: Bristol Port Company

**Chart: SC5608·15 (Panel B, Continuation to Avonmouth) ETRS89 DATUM**

Insert	depth, $4_6$ , and extend 5m contour S to enclose	(a) 51° 30' ·22N. , 2° 45' ·10W.
Delete	depth, $5_2$ , close W of:	(a) above

**Chart: SC5608·19 ETRS89 DATUM**

Insert	depth, $1_9$ , enclosed by 2m contour	51° 30' ·290N. , 2° 46' ·101W.
	depth, $5_4$	(a) 51° 30' ·177N. , 2° 45' ·187W.
	depth, $4_1$ , enclosed by 5m contour	(b) 51° 30' ·250N. , 2° 45' ·158W.
	depth, $4_6$ , enclosed by 5m contour	(c) 51° 30' ·223N. , 2° 45' ·102W.
	depth, $3_5$ , and extend 5m contour S to enclose	51° 30' ·264N. , 2° 45' ·068W.
	depth, $5_9$	(d) 51° 30' ·189N. , 2° 45' ·041W.
	depth, $2_2$	(e) 51° 30' ·316N. , 2° 45' ·017W.
	depth, $1_5$ , enclosed by 2m contour	(f) 51° 30' ·362N. , 2° 44' ·957W.
	depth, $6_2$	(g) 51° 30' ·249N. , 2° 44' ·813W.
	depth, $6_6$	(h) 51° 30' ·299N. , 2° 44' ·593W.
Delete	depth, $6_2$ , close W of:	(a) above
	depth, $6_4$ , close SW of:	(b) above
	depth, $6_7$ , close S of:	(c) above
	depth, $7_4$ , close SE of:	(d) above
	depth, $4_4$ , close NW of:	(e) above
	depth, $2_8$ , close NW of:	(f) above
	depth, $7_2$ , close NW of:	(g) above
	depth, $9_4$ , close NW of:	(h) above

---

**L748/18 ENGLAND — Bristol Channel — Burnham-on-Sea — Legend.**

Source: Port of Bridgwater Notice 2/18

**Chart: SC5608·13 ETRS89 DATUM**

Amend legend to, 118°, centred on: 51° 15' ·05N. , 3° 01' ·87W.

---

**L1142/18 ENGLAND — Bristol Channel — Swansea Bay and Gower Peninsula S and W — Depths. Drying heights.**

Source: British Government Survey

**Chart: SC5608·1 ETRS89 DATUM**

Insert	depth, 19 <sub>2</sub> , enclosed by 20m contour	(a) 51° 28' ·34N. , 4° 03' ·11W.
Replace	depth, 16 <sub>2</sub> , with depth, 15 <sub>5</sub>	51° 30' ·66N. , 4° 06' ·31W.
	depth, 11 <sub>6</sub> , with depth, 10 <sub>6</sub>	51° 33' ·05N. , 3° 56' ·08W.
Delete	depth, 20 <sub>2</sub> , close SE of:	(a) above

**Chart: SC5608·2 (Panel A, Padstow to Saint Ann's Head) ETRS89 DATUM**

Insert	depth, 19 <sub>2</sub> , enclosed by 20m contour	51° 28' ·3N. , 4° 03' ·1W.
Replace	depth, 16 <sub>2</sub> , with depth, 15 <sub>5</sub>	51° 30' ·7N. , 4° 06' ·3W.

**Chart: SC5608·3 ETRS89 DATUM**

Insert	depth, 19 <sub>2</sub> , enclosed by 20m contour	(a) 51° 28' ·34N. , 4° 03' ·11W.
	drying height, 0 <sub>5</sub>	51° 29' ·79N. , 3° 46' ·92W.
Replace	depth, 16 <sub>2</sub> , with depth, 15 <sub>5</sub>	51° 30' ·66N. , 4° 06' ·31W.
	depth, 11 <sub>6</sub> , with depth, 10 <sub>6</sub>	51° 33' ·05N. , 3° 56' ·08W.
Delete	depth, 20 <sub>2</sub> , close SE of:	(a) above

**Chart: SC5608·6 ETRS89 DATUM**

Insert	depth, 4 <sub>8</sub> , enclosed by 5m contour	51° 33' ·24N. , 4° 18' ·86W.
	depth, 9 <sub>8</sub> , enclosed by 10m contour	(a) 51° 32' ·95N. , 4° 06' ·14W.
	depth, 19 <sub>2</sub> , enclosed by 20m contour	(b) 51° 28' ·34N. , 4° 03' ·11W.
	depth, 18 <sub>6</sub> , enclosed by 20m contour	(c) 51° 28' ·51N. , 4° 00' ·09W.
Delete	depth, 11 <sub>6</sub> , close S of:	(a) above
	depth, 20 <sub>2</sub> , close SE of:	(b) above
	depth, 20 <sub>6</sub> , close E of:	(c) above

**Chart: SC5608·7 ETRS89 DATUM**

Insert depth,  $10_6$  (a)  $51^{\circ} 33' \cdot 05N. , 3^{\circ} 56' \cdot 08W.$

Delete depth,  $11_6$ , close W of: (a) above

**Chart: SC5608-10 ETRS89 DATUM**

Insert depth,  $0_5$ , and extend 2m contour SW to enclose  $51^{\circ} 30' \cdot 09N. , 3^{\circ} 47' \cdot 81W.$

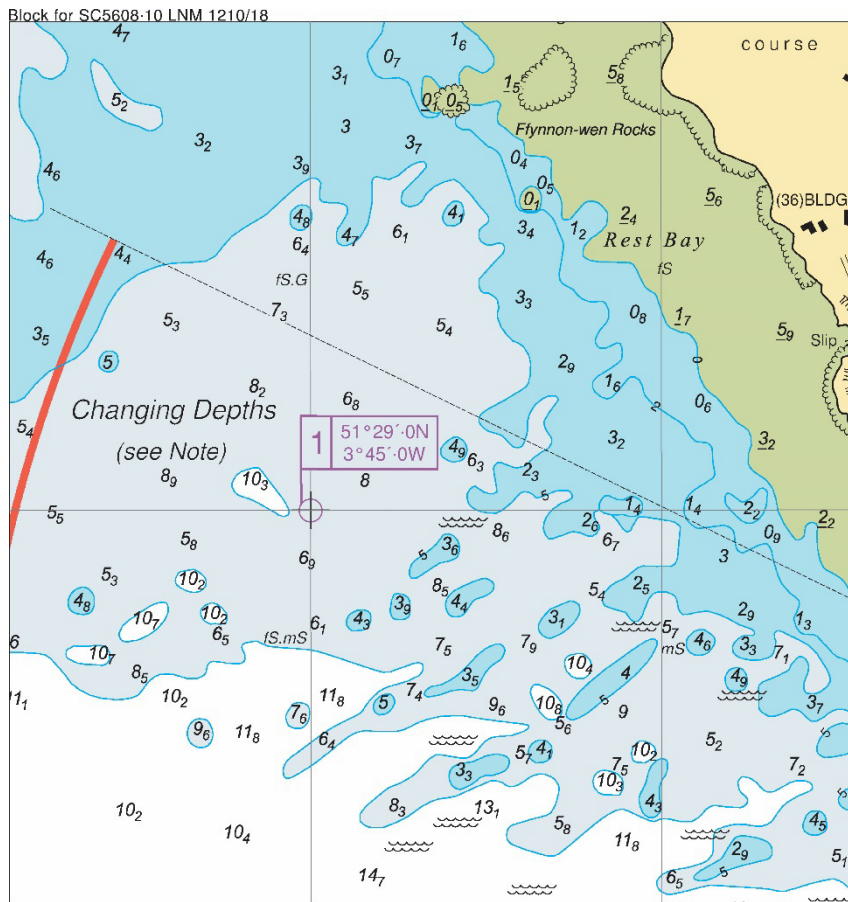
drying height,  $0_5$ , and extend 0m low water line S to enclose  $51^{\circ} 29' \cdot 79N. , 3^{\circ} 46' \cdot 92W.$

**L1210/18 WALES — South Coast — Porthcawl — NM Blocks.**

Source: Porthcawl Harbour Master

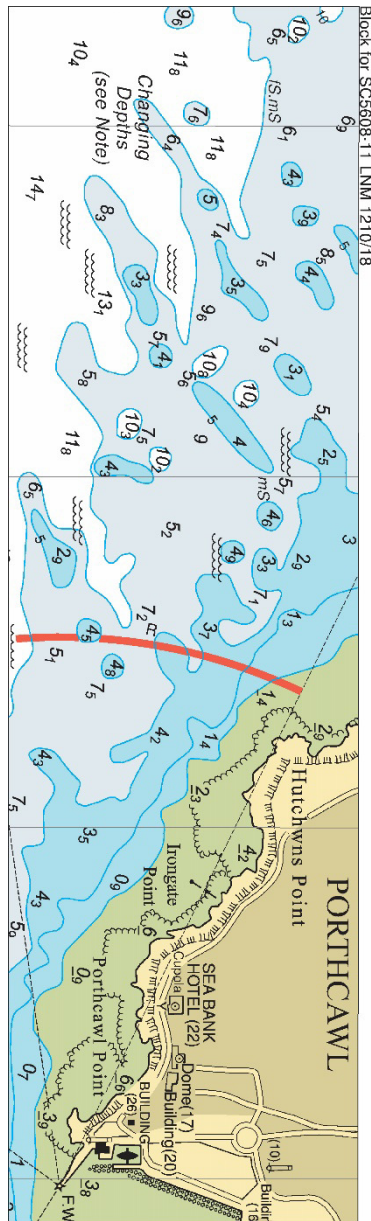
**Chart: SC5608-10 ETRS89 DATUM**

Insert the accompanying block, centred on:  $51^{\circ} 29' \cdot 1N. , 3^{\circ} 43' \cdot 9W.$



**Chart: SC5608-11 ETRS89 DATUM**


Insert the accompanying block, centred on:  $51^{\circ} 28' \cdot 92N. , 3^{\circ} 43' \cdot 9W.$



**L1231/18 WALES — South Coast — Approaches to Milford Haven — Buoy.**  
 Source: Milford Haven Port Authority Notice 32/18

**Chart: SC5608-2 (Panel A, Padstow to Saint Ann's Head) ETRS89 DATUM**

Insert

 *F(5)Y.20s*

51° 27' .5N. , 5° 14' .0W.

**L1253/18 ENGLAND — West Coast — Severn Bridge — Light.**

Source: Gloucester Harbour Trustees Notice 3/18

**Chart: SC5608-17 (Panel A, Avonmouth to Severn Bridge) ETRS89 DATUM**

Delete  2Q.G(ver)11/5m6M 51° 36' ·16N. , 2° 38' ·00W.

**Chart: SC5608·20 (Panel A, Severn Bridge to Sharpness) ETRS89 DATUM**

Delete  2Q.G(ver)11/5m6M 51° 36' ·16N. , 2° 38' ·00W.

---

**L1328/18 WALES — South Coast — Swansea Bay — Buoy.**

Source: ABP South Wales Notice 8/18

**Chart: SC5608·1 ETRS89 DATUM**

Insert  *Fl(5)Y.20s* 51° 34' ·50N. , 3° 54' ·68W.

**Chart: SC5608·3 ETRS89 DATUM**

Insert  *Fl(5)Y.20s* 51° 34' ·50N. , 3° 54' ·68W.

**Chart: SC5608·7 ETRS89 DATUM**

Insert  *Fl(5)Y.20s* 51° 34' ·50N. , 3° 54' ·68W.

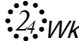
---

**L1508/18 WALES — South Coast — Port-Eynon Point SE — Wrecks. Depth.**

Source: British Government Survey

**Chart: SC5608·1 ETRS89 DATUM**

Insert  *Wk* (a) 51° 32' ·00N. , 4° 11' ·97W.

Delete  *Wk PA*, close S of: (a) above

**Chart: SC5608·6 ETRS89 DATUM**

Insert  *Wk* (a) 51° 32' ·00N. , 4° 11' ·97W.

Delete depth, *3s*, close SW of: (a) above

 *Wk PA*, close S of: (a) above

---

**L1531/18 ENGLAND — West Coast — Bristol — Lights.**

Source: Bristol Port Company

**Chart: SC5608·18 (Panel C, Bristol City Docks) ETRS89 DATUM**

Delete  Iso.5s (a) 51° 26' ·821N. , 2° 37' ·432W.

(b) 51° 26' ·812N. , 2° 37' ·418W.

- ★ F.R, close NE of: (a) above
- ★ F.R, close NE of: (b) above
- ★ F.G, close SW of: (a) above
- ★ F.G, close SW of: (b) above

**L1578/18 ENGLAND — Bristol Channel — Hinkley Point NW — Depths.**

Source: James Fisher Marine Services

**Chart: SC5608·3 ETRS89 DATUM**

- Insert depth, 2<sub>2</sub> (a) 51° 13' ·01N. , 3° 09' ·50W.
- Delete depth, 3, close NE of: (a) above

**Chart: SC5608·13 ETRS89 DATUM**

- Insert depth, 2<sub>2</sub> (a) 51° 13' ·01N. , 3° 09' ·50W.
- Replace depth, 2<sub>3</sub>, with depth, 2, enclosed by 2m contour 51° 13' ·53N. , 3° 09' ·16W.
- depth, 2<sub>2</sub>, with depth, 1<sub>9</sub>, enclosed by 2m contour 51° 13' ·75N. , 3° 09' ·97W.
- Delete depth, 2<sub>6</sub>, close NE of: (a) above

**Notices to Mariners - Weekly Edition 15/2018 International Chart Series, Bristol Channel, Severn Estuary, Steep Holm to Avonmouth. — Chart 1176 — New Edition Announcement.**

**Charts SC5608·14, SC5608·15 and SC5608·17 WGS84 DATUM**

The following changes were published in the new edition of chart 1176, which is the source chart for the above folio sheets:

*Includes changes to depths, buoyage and spoil ground. Mariners should therefore navigate with caution on sheets SC5608·14, SC5608·15 and SC5608·17 and be aware that any subsequent Notices to Mariners applied to these sheets are issued for information only.*

These changes will be included in the next new edition of SC5608.

Temporary/Preliminary NMs

**L1891(P)/18 ENGLAND — Bristol Channel — Burnham-on-Sea — Lights.**

Source: Port of Bridgwater Notice 7/18

1. The Burnham-on-Sea Lower Light, Dir F.WRG.4m12/10M in position 51° 14' ·90N. , 3° 00' ·35W. has amended sectors as follows:



G 071°-075° (4°)  
 W 075°-085° (10°)  
 R 085°-095° (10°)

2. The light sector, W 074°-164° (90°), of the light, Fl.7-5s7m12M in the same position as above, remains unchanged.
3. Mariners are advised to navigate with caution in the area.
4. These changes will be included in a New Edition of Chart 1152 to be published 31 May 2018.(ETRS89 DATUM)

## Chart affected – SC5608

### L2200/18 ENGLAND — Bristol Channel — King Road — Depths. Drying height.

Source: Bristol Port Company

#### Chart: SC5608·15 (Panel A, Bristol Deep to Portishead) ETRS89 DATUM

Insert	depth, $4_s$ , and extend 5m contour SE to enclose	51° 30' ·22N. , 2° 46' ·84W.
	depth, $1_s$ , and extend 2m contour SE to enclose	51° 30' ·60N. , 2° 45' ·90W.
	drying height, $0_z$ , enclosed by 0m low water line	51° 30' ·65N. , 2° 46' ·05W.

#### Chart: SC5608·15 (Panel B, Continuation to Avonmouth) ETRS89 DATUM

Insert	depth, $4_s$ , and extend 5m contour SE to enclose	51° 30' ·22N. , 2° 46' ·84W.
	depth, $1_s$ , and extend 2m contour SE to enclose	51° 30' ·60N. , 2° 45' ·90W.
	drying height, $0_z$ , enclosed by 0m low water line	51° 30' ·65N. , 2° 46' ·05W.
Replace	depth, $7_s$ , with depth, $7_1$	51° 30' ·27N. , 2° 44' ·35W.
	depth, $4_3$ , with depth, $3_3$	51° 31' ·51N. , 2° 42' ·78W.

#### Chart: SC5608·17 (Panel A, Avonmouth to Severn Bridge) ETRS89 DATUM

Insert	depth, $7_1$	(a) 51° 30' ·27N. , 2° 44' ·35W.
	depth, $3_3$ , and extend 5m contour W to enclose	51° 31' ·51N. , 2° 42' ·78W.
Delete	depth, $8_3$ , close NE of:	(a) above

#### Chart: SC5608·19 ETRS89 DATUM

Insert	depth, $1_s$ , enclosed by 2m contour	(a) 51° 30' ·598N. , 2° 45' ·899W.
	depth, $4_3$	(b) 51° 30' ·007N. , 2° 44' ·237W.
	drying height, $0_z$ , enclosed by 0m low water line	(c) 51° 30' ·646N. , 2° 46' ·051W.
Replace	depth, $7_s$ , with depth, $7_1$	51° 30' ·268N. , 2° 44' ·355W.
Delete	depth, $3_7$ , close W of:	(a) above
	depth, $4_5$ , close SW of:	(b) above
	depth, $2_7$ , close SW of:	(c) above

---

**L2208/18 ENGLAND — Bristol Channel — River Torridge — Drying heights.  
Depth.**

Source: Torridge District Council

**Chart: SC5608·5 (Panel A, Barnstaple and Bideford) ETRS89 DATUM**

Insert	drying height, <u>2</u>	51° 03' ·32N. , 4° 11' ·32W.
	drying height, <u>2</u> <sub>3</sub>	(a) 51° 03' ·09N. , 4° 11' ·19W.
	drying height, <u>2</u> <sub>3</sub> , and extend approximate 0m low water line S to enclose	51° 03' ·04N. , 4° 11' ·33W.
	drying height, <u>2</u> <sub>3</sub> , and extend approximate 0m low water line E to enclose	51° 02' ·72N. , 4° 11' ·18W.
	drying height, <u>2</u> <sub>3</sub>	51° 02' ·71N. , 4° 11' ·27W.
Replace depth, <u>0</u> <sub>3</sub> , with drying height, <u>2</u> <sub>3</sub> , and extend approximate 0m low water line E to enclose		51° 01' ·99N. , 4° 12' ·13W.
Delete	drying height, <u>1</u> <sub>3</sub> , close W of:	(a) above

---

**L2253/18 WALES — South Coast — Mumbles Head — Fog signal.**

Source: Trinity House

**Chart: SC5608·1 ETRS89 DATUM**

Amend fog signal to, Horn(1)30s, at light: 51° 34' ·01N. , 3° 58' ·27W.

**Chart: SC5608·2 (Panel A, Padstow to Saint Ann's Head) ETRS89 DATUM**

Amend fog signal to, Horn(1)30s, at light: 51° 34' ·0N. , 3° 58' ·1W.

**Chart: SC5608·3 ETRS89 DATUM**

Amend fog signal to, Horn(1)30s, at light: 51° 34' ·01N. , 3° 58' ·27W.

**Chart: SC5608·6 ETRS89 DATUM**

Amend fog signal to, Horn(1)30s, at light: 51° 34' ·01N. , 3° 58' ·27W.

**Chart: SC5608·7 ETRS89 DATUM**

Amend fog signal to, Horn(1)30s, at light: 51° 34' ·01N. , 3° 58' ·27W.

---

**L2419/18 ENGLAND — Bristol Channel — Denny Shoal SW — Depths.**

Source: Bristol Port Company

**Chart: SC5608·15 (Panel A, Bristol Deep to Portishead) ETRS89 DATUM**

Insert depth,  $1_7$ , and extend 2m contour S to enclose 51° 30' ·26N. , 2° 46' ·21W.

**Chart: SC5608·15 (Panel B, Continuation to Avonmouth) ETRS89 DATUM**

Insert depth,  $1_7$ , and extend 2m contour S to enclose 51° 30' ·26N. , 2° 46' ·21W.

**Chart: SC5608·19 ETRS89 DATUM**

Insert depth,  $1_7$ , enclosed by 2m contour 51° 30' ·257N. , 2° 46' ·210W.

depth,  $4_9$ , enclosed by 5m contour 51° 30' ·162N. , 2° 45' ·338W.

depth,  $4_3$ , enclosed by 5m contour 51° 30' ·207N. , 2° 45' ·281W.

depth,  $1_9$ , and extend 2m contour S to enclose 51° 30' ·386N. , 2° 45' ·250W.

depth,  $0_6$  (a) 51° 30' ·442N. , 2° 44' ·990W.

Delete depth,  $1_5$ , close NW of: (a) above

---

**Notices to Mariners - Weekly Edition 22/2018 England and Wales, Bristol Channel, Nash Point to Sand Point.  
— Chart 1152 — New Edition Announcement.**

**Charts SC5608·12 and SC5608·13 WGS84 DATUM**

The following changes were published in the new edition of chart 1152, which is the source chart for the above folio sheets:

*Includes changes to depths from the latest Sedgemoor District Council and Commercial surveys. Mariners should therefore navigate with caution on sheets SC5608·12 and SC5608·13 and be aware that any subsequent Notices to Mariners applied to these sheets are issued for information only.*

These changes will be included in the next new edition of SC5608.

---

**L2854/18 ENGLAND — Bristol Channel — Bridgwater Bar and Lobspound Point SE — Depths. Drying heights. Drying contour.**

Source: The Bristol Port Company

**Chart: SC5608·13 ETRS89 DATUM**

Insert depth,  $0_6$  (a) 51° 13' ·70N. , 3° 06' ·67W.

circular limit of 0m low water line, radius 100m, centred on: (b) 51° 13' ·83N. , 3° 06' ·21W.

drying height,  $\underline{5}_3$  (c) 51° 11' ·67N. , 3° 01' ·84W.

Delete depth,  $1_3$ , close SE of: (a) above

depth,  $0_9$ , close SE of: (b) above

drying height,  $\underline{3}$ , close S of: (c) above

---

**L2864/18 WALES — South Coast — Approaches to the River Neath — Drying heights. Depth.**

Source: mv Titan Discovery

**Chart: SC5608·7 ETRS89 DATUM**

Insert drying height, 1<sub>5</sub>, enclosed by 0m low water line (a) 51° 35' ·80N. , 3° 52' ·73W.  
drying height, 0<sub>5</sub>, enclosed by 0m low water line 51° 35' ·72N. , 3° 52' ·64W.  
Delete depth, 1<sub>1</sub>, close NE of: (a) above

---

**L2934/18 ENGLAND — West Coast — River Camel — Drying heights. Depths.**

Source: Padstow Harbour Commissioners

**Chart: SC5608·5 (Panel B, Padstow) ETRS89 DATUM**

Insert drying height, 0<sub>6</sub> (a) 50° 33' ·92N. , 4° 56' ·24W.  
drying height, 0<sub>7</sub>, and extend 0m low water line W to enclose (b) 50° 33' ·35N. , 4° 56' ·06W.  
drying height, 6<sub>4</sub>, and extend 0m low water line SW to enclose (c) 50° 33' ·06N. , 4° 55' ·96W.  
drying height, 5<sub>3</sub> (d) 50° 32' ·52N. , 4° 55' ·99W.  
Delete depth, 0<sub>7</sub>, close N of: (a) above  
depth, 0<sub>8</sub>, close NE of: (b) above  
depth, 1<sub>4</sub>, close NW of: (c) above  
drying height, 5<sub>3</sub>, close NE of: (c) above  
drying height, 4<sub>8</sub>, close S of: (d) above  
drying height, 4, close NE of: (d) above

---

**L3003/18 WALES — South Coast — Porthcawl W, Middle Nash N and W, Nash Sand NW and SE, Nell's Point SE and Lavernock Point SE — Depths. Drying heights. Wrecks.**

Source: mv Titan Endeavour

**Chart: SC5608·3 ETRS89 DATUM**

Insert drying height, 0<sub>4</sub>, and extend 0m low water line SW to enclose 51° 25' ·12N. , 3° 38' ·82W.  
drying height, 1<sub>8</sub> (a) 51° 25' ·16N. , 3° 37' ·90W.  
Delete drying height, 0<sub>6</sub>, close E of: (a) above

**Chart: SC5608·8 (Panel B, Barry) ETRS89 DATUM**

Insert WK (a) 51° 23' ·05N. , 3° 15' ·46W.

Delete depth,  $8_4$ , close E of: (a) above

### Chart: SC5608·9 ETRS89 DATUM

Insert depth,  $1_8$ , enclosed by 2m contour (a) 51° 25' ·42N. , 3° 41' ·06W.  
depth,  $1_5$ , enclosed by 2m contour 51° 25' ·50N. , 3° 40' ·00W.  
drying height,  $0_4$ , enclosed by 0m low water line (b) 51° 25' ·12N. , 3° 38' ·82W.  
drying height,  $1_6$ , enclosed by 0m low water line (c) 51° 25' ·17N. , 3° 38' ·38W.  
drying height,  $1_8$ , and extend 0m low water line SW to enclose (d) 51° 25' ·16N. , 3° 37' ·90W.  
depth,  $0_7$ , and extend 2m contour S to enclose (e) 51° 24' ·99N. , 3° 37' ·11W.  
drying height,  $2_7$ , and extend 0m low water line NE to enclose (f) 51° 24' ·87N. , 3° 36' ·27W.

Delete depth,  $6_3$ , close NE of: (a) above  
depth,  $10_6$ , close SW of: (a) above  
depth,  $3_6$ , close NW of: (b) above  
depth,  $5_3$ , close SE of: (c) above  
drying height,  $0_6$ , close E of: (d) above  
depth,  $3_3$ , close W of: (e) above  
drying height,  $0_3$ , close SW of: (f) above

### Chart: SC5608·10 ETRS89 DATUM

Insert depth,  $2_7$  (a) 51° 28' ·85N. , 3° 44' ·07W.  
Delete depth,  $2_5$ , close NE of: (a) above

### Chart: SC5608·11 ETRS89 DATUM

Insert depth,  $2_7$  (a) 51° 28' ·85N. , 3° 44' ·07W.  
depth,  $1_5$ , enclosed by 2m contour (b) 51° 25' ·59N. , 3° 41' ·93W.  
depth,  $5_3$ , enclosed by 10m contour (c) 51° 25' ·35N. , 3° 41' ·22W.  
depth,  $1_8$ , enclosed by 2m contour (d) 51° 25' ·42N. , 3° 41' ·06W.  
depth,  $1_5$ , enclosed by 2m contour (e) 51° 25' ·51N. , 3° 40' ·01W.  
drying height,  $0_4$ , enclosed by 0m low water line (f) 51° 25' ·12N. , 3° 38' ·82W.  
drying height,  $1_6$ , enclosed by 0m low water line (g) 51° 25' ·17N. , 3° 38' ·38W.  
drying height,  $1_8$ , enclosed by 0m low water line 51° 25' ·16N. , 3° 37' ·90W.  
depth,  $0_7$ , and extend 2m contour S to enclose (h) 51° 24' ·98N. , 3° 37' ·11W.  
depth,  $0_4$ , and extend 2m contour S to enclose (i) 51° 24' ·89N. , 3° 36' ·90W.  
drying height,  $2_7$ , and extend 0m low water line NE to enclose 51° 24' ·91N. , 3° 36' ·47W.  
drying height,  $2_7$ , enclosed by 0m low water line (j) 51° 24' ·87N. , 3° 36' ·27W.  
drying height,  $2_3$ , and extend 0m low water line N to enclose (k) 51° 24' ·83N. , 3° 35' ·85W.  
drying height,  $0_3$ , and extend 0m low water line SE to enclose 51° 24' ·19N. , 3° 34' ·38W.

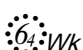
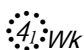
Delete depth,  $2_5$ , close NE of: (a) above

depth, $6_4$ , close W of:	(b) above
depth, $10_6$ , close S of:	(c) above
depth, $6_3$ , close N of:	(d) above
depth, $6_3$ , close N of:	(e) above
depth, $3_6$ , close NW of:	(f) above
depth, $5_8$ , close SE of:	(g) above
depth, $1$ , close NE of:	(h) above
depth, $3_1$ , close SE of:	(h) above
depth, $3_4$ , close SE of:	(i) above
depth, $0_2$ , close SE of:	(j) above
drying height, $2_2$ , close SE of:	(k) above

### Chart: SC5608·12 ETRS89 DATUM

Insert		(a) 51° 23' ·05N. , 3° 15' ·46W.
Delete	depth, $8_4$ , close NE of:	(a) above

### Chart: SC5608·13 ETRS89 DATUM

Insert		(a) 51° 23' ·05N. , 3° 15' ·46W.
Replace	depth, $3_9$ , with 	51° 24' ·01N. , 3° 09' ·25W.
Delete	depth, $8_4$ , close NE of:	(a) above

### Chart: SC5608·14 ETRS89 DATUM

Replace	depth, $3_9$ , with 	51° 24' ·01N. , 3° 09' ·25W.
---------	---	------------------------------

### Chart: SC5608·16 (Panel A, Approaches to Barry and Cardiff) ETRS89 DATUM

Insert		(a) 51° 23' ·05N. , 3° 15' ·46W.
Replace	depth, $4_2$ , with 	51° 24' ·01N. , 3° 09' ·25W.
Delete	depth, $8_4$ , close E of:	(a) above

## L3471/18 ENGLAND — Bristol Channel — — Depths.

Source: Bristol Port Company

### Chart: SC5608·14 ETRS89 DATUM

Insert	depth, $3_7$ , and extend 5m contour NW to enclose	51° 26' ·44N. , 2° 58' ·77W.
	depth, $4_4$ , enclosed by 5m contour	51° 26' ·60N. , 2° 58' ·57W.
	depth, $10_8$	(a) 51° 27' ·21N. , 2° 57' ·93W.
Delete	depth, $12_6$ , close SE of:	(a) above

Insert depth,  $6_7$  51° 27' ·93N. , 2° 58' ·22W.

**Chart: SC5608·15 (Panel A, Bristol Deep to Portishead) ETRS89 DATUM**




Insert depth,  $10_8$  (a) 51° 27' ·21N. , 2° 57' ·93W.  
Delete depth,  $12_8$ , close SE of: (a) above  
Insert depth,  $10_9$  (b) 51° 27' ·39N. , 2° 57' ·48W.  
Delete depth,  $12_9$ , close E of: (b) above  
Insert depth,  $10_5$  (c) 51° 27' ·50N. , 2° 57' ·03W.  
Delete depth,  $11_2$ , close SE of: (c) above  
Insert depth,  $9_8$ , enclosed by 10m contour 51° 27' ·57N. , 2° 57' ·26W.  
depth,  $6_7$  51° 27' ·93N. , 2° 58' ·22W.

---




**L3535/18 ENGLAND — Bristol Channel — — Buoyage. Legend.**

Source: Hinkley Point C Harbour Authority Notice 3/18 and Trinity House Notice 11/18

**Chart: SC5608·3 ETRS89 DATUM**

Insert  *Fl(3)R. 10s West Hinkley* 51° 13' ·67N. , 3° 10' ·76W.  
 *Fl(4)G. 10s East Hinkley* 51° 13' ·50N. , 3° 09' ·60W.  
legend, Works in progress (2018), centred on: 51° 14' ·02N. , 3° 09' ·26W.  
Delete  *Iso.5s Bell Gore* 51° 13' ·96N. , 3° 09' ·80W.

**Chart: SC5608·13 ETRS89 DATUM**

Insert  *Fl(3)R. 10s West Hinkley* 51° 13' ·70N. , 3° 10' ·80W.  
 *Fl(4)G. 10s East Hinkley* 51° 13' ·50N. , 3° 09' ·60W.  
legend, Works in progress (2018), centred on: 51° 13' ·93N. , 3° 10' ·48W.  
51° 13' ·31N. , 3° 09' ·55W.  
Delete  *Iso.5s Bell Gore* 51° 13' ·96N. , 3° 09' ·78W.  
legend, Works in progress (2018), centred on: 51° 12' ·91N. , 3° 09' ·62W.

---

**L3542/18 WALES — South Coast — — Legends.**

Source: Neath Port Authority

**Chart: SC5608·7 ETRS89 DATUM**

Insert legend, Training Wall (covers), centred on: 51° 35' ·91N. , 3° 52' ·73W.  
51° 36' ·02N. , 3° 52' ·34W.

---

**Notices to Mariners - Weekly Edition 31/2018 England - West Coast, Harbours on the North Coast of Cornwall.**  
**— Chart 1168 — New Edition Announcement.**

**Chart SC5608-5 WGS84 DATUM**

The following changes were published in the new edition of chart 1168, which is the source chart for the above folio sheet:

*Includes changes to depths from the latest Port Authority Surveys. Includes a new panel B, and changes to limits of panel C to provide improved coverage of Padstow. Mariners should therefore navigate with caution on sheet SC5608-5 and be aware that any subsequent Notices to Mariners applied to this sheet are issued for information only.*

These changes will be included in the next new edition of SC5608.

---

**Notices to Mariners - Weekly Edition 31/2018 International Chart Series, England - West Coast, Port of Bristol.**  
**— Chart 1859 — New Edition Announcement.**

**Charts SC5608-18 and SC5608-19 WGS84 DATUM**

The following changes were published in the new edition of chart 1859, which is the source chart for the above folio sheets:

*Includes changes to depths from the latest Bristol Port Authority Surveys. Mariners should therefore navigate with caution on sheets SC5608-18 and SC5608-19 and be aware that any subsequent Notices to Mariners applied to these sheets are issued for information only.*

These changes will be included in the next new edition of SC5608.

---

**L3833/18 ENGLAND — Bristol Channel — — Depths.**

Source: Bristol Port Company

**Chart: SC5608-15 (Panel A, Bristol Deep to Portishead) ETRS89 DATUM**

Insert depth, 1<sub>s</sub>, enclosed by 2m contour (a) 51° 30' ·43N. , 2° 46' ·35W.

Delete depth, 3<sub>r</sub>, close NE of: (a) above

**Chart: SC5608-15 (Panel B, Continuation to Avonmouth) ETRS89 DATUM**

Insert depth, 1<sub>s</sub>, enclosed by 2m contour (a) 51° 30' ·43N. , 2° 46' ·35W.



Delete depth,  $3_7$ , close NE of: (a) above

---

**L3834/18 ENGLAND — Bristol Channel — — Depths.**

Source: Bristol Port Company

**Chart: SC5608-15 (Panel B, Continuation to Avonmouth) ETRS89 DATUM**

Insert depth,  $2_6$  (a)  $51^{\circ} 30' .48N. , 2^{\circ} 44' .61W.$

Delete depth,  $3_5$ , close W of: (a) above

Insert depth,  $2_9$   $51^{\circ} 30' .52N. , 2^{\circ} 44' .39W.$

5m contour, joining: (b)  $51^{\circ} 30' .55N. , 2^{\circ} 44' .48W.$

(c)  $51^{\circ} 30' .55N. , 2^{\circ} 44' .34W.$

and

(d)  $51^{\circ} 30' .47N. , 2^{\circ} 44' .36W.$

(e)  $51^{\circ} 30' .49N. , 2^{\circ} 44' .45W.$

Delete former 5m contour, joining: (b) above

(e) above

and

(c) above

(d) above

**Chart: SC5608-17 (Panel A, Avonmouth to Severn Bridge) ETRS89 DATUM**

Insert depth,  $2_9$   $51^{\circ} 30' .52N. , 2^{\circ} 44' .39W.$

5m contour, joining: (a)  $51^{\circ} 30' .55N. , 2^{\circ} 44' .34W.$

and

(b)  $51^{\circ} 30' .47N. , 2^{\circ} 44' .36W.$

Delete former 5m contour, joining: (a) above

(b) above

---

**Temporary/Preliminary NMs**

**~~L3835(P)/18 ENGLAND — Bristol Channel — — Depths.~~**

~~Source: Bristol Port Company~~

- ~~1. Numerous changes to depths have been identified in the vicinity of King Road, the most significant of which are as follows:~~

<i>Depth</i>	<i>Position</i>
<del>2.9m</del>	<del><math>51^{\circ} 30' .518N. , 2^{\circ} 44' .391W.</math></del>
<del>2.8m</del>	<del><math>51^{\circ} 30' .536N. , 2^{\circ} 44' .443W.</math></del>
<del>4.4m</del>	<del><math>51^{\circ} 30' .436N. , 2^{\circ} 44' .555W.</math></del>

<del>2.6m</del>	<del>51° 30' 478N. , 2° 44' 605W.</del>
<del>4.9m</del>	<del>51° 30' 416N. , 2° 44' 694W.</del>
<del>1.8m</del>	<del>51° 30' 457N. , 2° 44' 772W.</del>
<del>1.6m</del>	<del>51° 30' 400N. , 2° 45' 172W.</del>
<del>1.5m</del>	<del>51° 30' 431N. , 2° 46' 346W.</del>
<del>8.7m</del>	<del>51° 30' 082N. , 2° 45' 617W.</del>
<del>14.6m</del>	<del>51° 30' 025N. , 2° 45' 716W.</del>

~~2. Charts will be updated when full details become available.(ETRS89 DATUM)~~

### ~~Chart affected — SC5608~~

### L3917/18 WALES — South Coast — — Legends.

Source: ABP South Wales

#### Chart: SC5608.7 ETRS89 DATUM

Replace legend, *Dredged to 1.0m (2016) (see Note)* with, *Maintained*

*depth 0.5m (see Note), centred on:*

51° 35' .17N. , 3° 56' .37W.

### L3954/18 ENGLAND — Bristol Channel — — Depths.

Source: Bristol Port Company

*Note:* Former Notice L3835(P)/18 is cancelled.

#### Chart: SC5608.19 ETRS89 DATUM

Insert	depth, 1 <sub>6</sub> , and extend 15m contour S to enclose	51° 30' .025N. , 2° 45' .716W.
	depth, 8 <sub>7</sub>	51° 30' .082N. , 2° 45' .617W.
	depth, 1 <sub>6</sub> , and extend 2m contour W to enclose	51° 30' .400N. , 2° 45' .172W.
	depth, 1 <sub>8</sub> , and extend 2m contour SE to enclose	51° 30' .457N. , 2° 44' .773W.
	depth, 4 <sub>9</sub> , enclosed by 5m contour	(a) 51° 30' .416N. , 2° 44' .694W.
Delete	depth, 8 <sub>6</sub> , close SE of:	(a) above
Insert	depth, 2 <sub>6</sub>	(b) 51° 30' .479N. , 2° 44' .605W.
Delete	depth, 6 <sub>3</sub> , close SW of:	(b) above
	depth, 4 <sub>4</sub> , close NE of:	(b) above
Insert	depth, 4 <sub>4</sub>	(c) 51° 30' .436N. , 2° 44' .555W.
	extend 5m contour S to enclose	(b)-(c) above
	depth, 2 <sub>9</sub> , and extend 5m contour SE to enclose	(d) 51° 30' .518N. , 2° 44' .391W.
Delete	depth, 7 <sub>7</sub> , close NE of:	(d) above
Insert	depth, 2 <sub>9</sub>	(e) 51° 30' .536N. , 2° 44' .443W.
Delete	depth, 4 <sub>3</sub> , close E of:	(e) above

---

**L4151/18 ENGLAND — Bristol Channel — — Light-beacons.**

Source: Port of Bridgwater

**Chart: SC5608-13 ETRS89 DATUM**

Insert

 Fl.R.3s

51° 10' ·39N. , 3° 00' ·43W.

---

**L4449/18 WALES — South Coast — — Wreck.**

Source: British Government Survey

**Chart: SC5608-3 ETRS89 DATUM**

Replace

 with 

51° 23' ·33N. , 3° 36' ·26W.

**Chart: SC5608-9 ETRS89 DATUM**

Replace

 with 

51° 23' ·33N. , 3° 36' ·26W.

---

Temporary/Preliminary NMs

**L4494(P)/18 WALES — South Coast — — Depths. Drying heights.**

Source: British Government Survey

1. Depths and drying heights less than charted exist in the Bristol Channel between Swansea and Cardiff. The most significant are as follows:

<i>Depth</i>	<i>Position</i>
7.7m	51° 28' ·86N. , 3° 50' ·04W.
4.7m	51° 29' ·27N. , 3° 46' ·85W.
0.5m	51° 28' ·02N. , 3° 40' ·86W.
0.6m	51° 27' ·22N. , 3° 39' ·29W.
8.3m	51° 25' ·41N. , 3° 41' ·93W.
8.3m	51° 25' ·24N. , 3° 40' ·90W.
0m	51° 25' ·15N. , 3° 38' ·99W.
0.1m	51° 25' ·91N. , 3° 36' ·21W.
0.2m	51° 23' ·76N. , 3° 31' ·87W.

<i>Drying Height</i>	<i>Position</i>
1.4m	51° 25' ·16N. , 3° 38' ·53W.
0.9m	51° 23' ·55N. , 3° 30' ·37W.

2. Mariners are advised to navigate with caution in the area.
3. These changes will be included in New Editions of Charts 1152, 1165, 1169, 1176 and 1182 to be published late 2018 and early 2019.(ETRS89 DATUM)

**Charts affected – SC5608**

---

## L4721/18 WALES — South Coast — — Buoyage.

Source: Trinity House

### Chart: SC5608·3 ETRS89 DATUM

Move  Q, from: 51° 20' ·95N. , 3° 12' ·20W.  
to: 51° 20' ·84N. , 3° 13' ·13W.

### Chart: SC5608·13 ETRS89 DATUM

Move  Q North One Fathom, from: 51° 20' ·94N. , 3° 12' ·16W.  
to: 51° 20' ·84N. , 3° 13' ·13W.

---

## L4767/18 ENGLAND — Bristol Channel — — Depths. Drying height.

Source: Bristol Port Company

### Chart: SC5608·15 (Panel B, Continuation to Avonmouth) ETRS89 DATUM

Insert drying height,  $\underline{Q}_5$ , and extend 0m low water line SE to  
enclose 51° 30' ·47N. , 2° 44' ·79W.

depth,  $1_\beta$ , enclosed by 2m contour (a) 51° 30' ·52N. , 2° 44' ·43W.

Delete depth,  $2_\beta$ , close E of: (a) above

### Chart: SC5608·19 ETRS89 DATUM

Insert depth,  $10_\beta$  (a) 51° 30' ·067N. , 2° 45' ·763W.

Delete depth,  $13_\beta$ , close S of: (a) above

Insert depth,  $3_\beta$ , and extend 5m contour NE to enclose (b) 51° 30' ·298N. , 2° 45' ·647W.

Delete depth,  $4_\beta$ , close SE of: (b) above

Insert drying height,  $\underline{Q}_5$ , enclosed by 0m low water line (c) 51° 30' ·473N. , 2° 44' ·786W.

Delete depth,  $1_\beta$ , close SE of: (c) above

Insert depth,  $4_7$ , enclosed by 5m contour 51° 30' ·345N. , 2° 44' ·740W.

depth,  $3_7$ , enclosed by 5m contour (d) 51° 30' ·406N. , 2° 44' ·670W.

Delete depth,  $4_\beta$ , and associated 5m contour, close NW of: (d) above

Insert depth,  $1_\beta$ , enclosed by 2m contour (e) 51° 30' ·523N. , 2° 44' ·433W.

Delete depth,  $2_\beta$ , close NW of: (e) above

Insert depth,  $5$ , enclosed by 5m contour 51° 30' ·677N. , 2° 43' ·842W.

depth,  $4_7$ , enclosed by 5m contour 51° 30' ·814N. , 2° 43' ·691W.

---

## L4947/18 WALES — South Coast — — Depths.

Source: Trinity House

**Chart: SC5608·3 ETRS89 DATUM**

Replace depth,  $g_2$ , with depth,  $7_8$

51° 20' ·73N. , 3° 13' ·08W.

**Chart: SC5608·13 ETRS89 DATUM**

Insert depth,  $7_8$

(a) 51° 20' ·73N. , 3° 13' ·08W.

Delete depth,  $g_1$ , close SW of:

(a) above

---

**L5269/18 ENGLAND — Bristol Channel — — Buoy.**

Source: Hinkley Point C Harbour Authority Notice 7/18

**Chart: SC5608·13 ETRS89 DATUM**

Move   $F(5)Y.20s$ , from:

51° 14' ·01N. , 3° 09' ·53W.

to:

51° 13' ·86N. , 3° 10' ·80W.

---

**L5290/18 ENGLAND — West Coast — — Drying heights.**

Source: Bristol Port Company

**Chart: SC5608·19 ETRS89 DATUM**

Insert drying height,  $Q_6$ , and extend 0m low water line NE to  
enclose

51° 30' ·106N. , 2° 42' ·733W.

drying height,  $1_2$

(a) 51° 29' ·771N. , 2° 42' ·426W.

Delete drying height,  $Q_2$ , close SE of:

(a) above

---