

**Admiralty Leisure Folio**  
**SC5616 Point of Ardnamurchan to Shiant Islands**

The Notices to Mariners (NMs) listed below apply to the latest edition of SC5616 (2<sup>nd</sup> Edition) published on 5<sup>th</sup> September 2013.

---

Temporary/Preliminary NMs

**~~L1402(P)/12 SCOTLAND — West Coast — Isle of Mull — Western Approaches to the Sound of Mull — Depths.~~**

Source: *mv Icebeam*

1. Numerous depths less than charted exist in the western approaches to the Sound of Mull. The most significant are as follows (WGS84 Datum):

<i>Depth</i>	<i>Position</i>
34m	<del>56° 41' 82N., 6° 14' 71W.</del>
21.5m	<del>56° 41' 15N., 6° 16' 17W.</del>
38m	<del>56° 41' 12N., 6° 13' 71W.</del>
20.9m	<del>56° 40' 53N., 6° 16' 63W.</del>
30.5m	<del>56° 40' 33N., 6° 23' 69W.</del>
31m	<del>56° 40' 27N., 6° 22' 82W.</del>
20.8m	<del>56° 40' 08N., 6° 16' 11W.</del>
23.5m	<del>56° 39' 91N., 6° 23' 80W.</del>
20.3m	<del>56° 39' 82N., 6° 13' 46W.</del>
37m	<del>56° 39' 18N., 6° 25' 62W.</del>
14.7m	<del>56° 38' 76N., 6° 13' 43W.</del>
15m	<del>56° 38' 44N., 6° 15' 00W.</del>
32m	<del>56° 38' 34N., 6° 23' 74W.</del>
34m	<del>56° 37' 76N., 6° 24' 27W.</del>
22.5m	<del>56° 37' 29N., 6° 23' 22W.</del>
24.5m	<del>56° 37' 29N., 6° 24' 85W.</del>
30.5m	<del>56° 36' 03N., 6° 25' 16W.</del>
33m	<del>56° 36' 00N., 6° 22' 01W.</del>

2. ~~These changes will be included in the next New Editions of Charts 2392, 2171 and 1796.~~

**~~Charts affected — SC5611 and SC5616~~**

---

Temporary/Preliminary NMs

**~~L5462(T)/12 SCOTLAND — West Coast — Canna — Canna Harbour — Buoy.~~**

Source: The National Trust for Scotland

1. The port-hand light-buoy in position 57° 03' 25N., 6° 28' 67W. (WGS84 Datum) is off station until further notice.

**~~Charts affected – SC5616~~**

---

Temporary/Preliminary NMs

**L1318(T)/13 SCOTLAND — West Coast — Approaches to the Sound of Mull — Depths. Rock.**

Source: mv *Triad*, mv *Seabeam* & British Government Surveys

1. Numerous depths less than charted exist in the western approaches to the Sound of Mull.
2. To the west and north coasts of Tiree and Coll, the most significant are as follows:

<i>Depth</i>	<i>Position (WGS84 Datum)</i>
2.9m	56° 29' .51N. , 7° 01' .67W.
1m	56° 29' .78N. , 7° 00' .43W.
7.3m	56° 30' .22N. , 7° 06' .21W.
7m	56° 30' .28N. , 7° 06' .68W.
5.3m	56° 31' .29N. , 7° 04' .47W.
12.2m	56° 32' .17N. , 7° 03' .24W.
8.6m	56° 32' .44N. , 6° 57' .41W.
8.8m	56° 32' .64N. , 6° 59' .19W.
8.9m	56° 33' .29N. , 6° 47' .74W.
18.6m	56° 33' .97N. , 6° 49' .37W.
21m	56° 34' .20N. , 6° 52' .87W.
16.2m	56° 36' .89N. , 6° 44' .96W.
6m	56° 41' .85N. , 6° 27' .87W.
13.7m	56° 42' .08N. , 6° 28' .43W.
14m	56° 42' .14N. , 6° 26' .21W.
19.4m	56° 42' .15N. , 6° 28' .19W.
11.5m	56° 42' .35N. , 6° 27' .67W.
12.8m	56° 42' .57N. , 6° 26' .54W.
12.4m	56° 42' .90N. , 6° 25' .91W.

3. On the north-west coast of Mull and in Loch Tuath, the most significant of these are as follows:

<i>Depth</i>	<i>Position (WGS84 Datum)</i>
6.7m	56° 29' .38N. , 6° 10' .93W.
8.0m	56° 29' .78N. , 6° 12' .19W.
* 0.6m	56° 35' .75N. , 6° 19' .46W.
* 1.9m	56° 36' .98N. , 6° 15' .20W.
* 1.7m	56° 37' .22N. , 6° 14' .35W.
8.6m	56° 37' .56N. , 6° 14' .35W.

4. Throughout the Passage of Tiree, the most significant are as follows:

<i>Depth</i>	<i>Position (WGS84 Datum)</i>
22m	56° 19' .58N. , 6° 38' .76W.
54m	56° 19' .96N. , 6° 41' .82W.
* 3.8m	56° 21' .17N. , 6° 24' .49W.
* 2.9m	56° 21' .27N. , 6° 26' .90W.
20.8m	56° 21' .49N. , 6° 40' .79W.

22.5m	56° 22' .00N. , 6° 41' .51W.
23.5m	56° 22' .30N. , 6° 36' .48W.
20.3m	56° 22' .39N. , 6° 38' .34W.
18.7m	56° 26' .05N. , 6° 30' .42W.
19.1m	56° 26' .65N. , 6° 31' .54W.
36m	56° 28' .89N. , 6° 33' .59W.
* 17.7m	56° 29' .53N. , 6° 28' .00W.
* 1.8m	56° 30' .04N. , 6° 47' .60W.
* 1.6m	56° 30' .23N. , 6° 47' .14W.
* 0.2m	56° 31' .37N. , 6° 43' .28W.
32m	56° 32' .76N. , 6° 32' .99W.
* 18.9m	56° 33' .68N. , 6° 26' .66W.
49m	56° 33' .69N. , 6° 32' .14W.
16.5m	56° 34' .24N. , 6° 36' .12W. Approximate Position
* 26m	56° 35' .16N. , 6° 25' .27W.
* 41m	56° 35' .35N. , 6° 27' .92W.
16.3m	56° 35' .72N. , 6° 32' .06W. Approximate Position
* 21.5m	56° 36' .21N. , 6° 24' .37W.
* 33m	56° 38' .16N. , 6° 20' .10W.
29m	56° 38' .63N. , 6° 25' .29W.
* 35m	56° 38' .83N. , 6° 26' .14W.
* 24.5m	56° 39' .24N. , 6° 16' .88W.
35m	56° 39' .67N. , 6° 20' .03W.

5. From the Treshnish Isles to Staffa and Little Colonsay, the most significant are as follows:

<i>Depth</i>	<i>Position (WGS84 Datum)</i>
19.3m	56° 26' .00N. , 6° 18' .87W.
18.7m	56° 26' .40N. , 6° 19' .73W.
4.6m	56° 26' .46N. , 6° 16' .67W.
13.8m	56° 26' .50N. , 6° 17' .32W.
3.8m	56° 26' .53N. , 6° 16' .72W.
21m	56° 26' .55N. , 6° 20' .71W.
24m	56° 26' .66N. , 6° 18' .15W.
13m	56° 26' .66N. , 6° 16' .75W.
24.5m	56° 26' .73N. , 6° 28' .19W.
3m	56° 26' .99N. , 6° 16' .74W.
17m	56° 27' .06N. , 6° 17' .53W.
* 12.9m	56° 27' .29N. , 6° 13' .62W.
* 1.4m	56° 27' .35N. , 6° 14' .07W.
18.7m	56° 27' .95N. , 6° 19' .36W.
7.7m	56° 27' .96N. , 6° 18' .53W.
* 2.8m	56° 27' .98N. , 6° 15' .33W.
* 0.9m	56° 28' .04N. , 6° 15' .67W.
* 1.8m	56° 28' .17N. , 6° 18' .50W.
7.3m	56° 28' .52N. , 6° 18' .93W.
19m	56° 28' .91N. , 6° 24' .76W.
15m	56° 29' .57N. , 6° 21' .09W.

20m            56° 29' .76N. , 6° 20' .92W.  
 8m             56° 30' .16N. , 6° 23' .05W.

6. \* A rock that covers and uncovers exists in position 56° 29' .91N. , 6° 23' .70W. (WGS84 Datum)\* Indicates new or revised entry
7. These changes will be included in the next New Editions of the appropriate charts.
8. Former Notice L531(P)/13 is cancelled.

**Charts affected – SC5611 and SC5616**

---

Temporary/Preliminary NMs

**L2524(T)/13 SCOTLAND — West Coast — Outer Hebrides — Sound of Barra — Depths.**

Source: British Government Surveys

1. Numerous depths less than charted exist in the Sound of Barra. The most significant are as follows (WGS84 Datum):

<i>Depth / Drying</i>	<i>Position</i>
1.9m	57° 06' .84N. , 7° 25' .06W.
* 2.2m	57° 04' .65N. , 7° 26' .50W.
7.2m	57° 04' .52N. , 7° 14' .10W.
2.8m	57° 04' .44N. , 7° 24' .11W.
4.3m	57° 04' .10N. , 7° 27' .11W.
10m	57° 04' .04N. , 7° 14' .54W.
3.2m	57° 04' .01N. , 7° 22' .46W.
* 4.4m	57° 03' .90N. , 7° 22' .05W.
7.3m	57° 03' .69N. , 7° 28' .76W.
10.1m	57° 03' .65N. , 7° 14' .81W.
6m	57° 03' .61N. , 7° 21' .00W.
* Drying 0.6m	57° 02' .89N. , 7° 16' .97W.
2.6m	57° 02' .77N. , 7° 17' .41W.
4.9m	57° 02' .75N. , 7° 15' .76W.
7.9m	57° 02' .66N. , 7° 19' .07W.
7.9m	57° 02' .65N. , 7° 19' .06W.
5.9m	57° 02' .48N. , 7° 16' .18W.
8.9m	57° 02' .16N. , 7° 17' .45W.
5.6m	57° 01' .63N. , 7° 21' .40W.
4.3m	57° 01' .56N. , 7° 30' .39W.
14.5m	57° 01' .42N. , 7° 18' .01W.
16.5m	57° 01' .27N. , 7° 17' .62W.
13.4m	57° 01' .18N. , 7° 18' .31W.
2.5m	57° 00' .83N. , 7° 19' .14W.
7.8m	57° 00' .61N. , 7° 19' .38W.
* 0.9m	57° 00' .53N. , 7° 21' .53W.
12.5m	57° 00' .41N. , 7° 18' .60W.
5.1m	57° 00' .19N. , 7° 20' .78W.

3.

<i>Depth / Drying</i>	<i>Position</i>
16.1m	56° 59' .71N. , 7° 18' .91W.
6m	56° 59' .62N. , 7° 20' .31W.
8.1m	56° 59' .47N. , 7° 19' .52W.
* 4.4m	56° 59' .45N. , 7° 22' .55W.
11.4m	56° 59' .35N. , 7° 19' .28W.
8.9m	56° 59' .30N. , 7° 19' .90W.
13.4m	56° 59' .08N. , 7° 19' .77W.
6.8m	56° 58' .59N. , 7° 20' .66W.
* 0.3m	56° 58' .56N. , 7° 24' .21W.
7.9m	56° 57' .94N. , 7° 23' .33W.
1.8m	56° 57' .82N. , 7° 24' .42W.
10.9m	56° 57' .43N. , 7° 23' .49W.
7.9m	56° 57' .22N. , 7° 22' .25W.

- \*Indicates new or revised entry
- These changes will be included in the next New Editions of Charts 1795, 1796, 2769 and 2770.
- Former Notice L527(P)/13 is cancelled.

#### **Chart affected – SC5616**

---

Temporary and Preliminary NMs

#### **L3211(P)/13 SCOTLAND — Hebrides — Barra Southwards to Berneray — Depths.**

Source: British Government Surveys

- Numerous depths less than charted exist south of Barra to Berneray. The most significant are as follows (WGS84 Datum):

<i>Depth</i>	<i>Position</i>
* 2.4m	56° 57' .23N. , 7° 25' .43W.
8.8m	56° 56' .93N. , 7° 24' .90W.
11.7m	56° 56' .87N. , 7° 22' .68W.
16.4m	56° 56' .69N. , 7° 22' .61W.
* 3.8m	56° 56' .61N. , 7° 26' .99W.
* 0.1m	56° 56' .54N. , 7° 30' .20W.
0.4m	56° 56' .30N. , 7° 27' .11W.
7m	56° 56' .28N. , 7° 25' .18W.
2.9m	56° 55' .73N. , 7° 33' .85W.
7.2m	56° 55' .33N. , 7° 28' .94W.
* 1.8m	56° 55' .24N. , 7° 29' .68W.
0.9m	56° 54' .96N. , 7° 33' .44W.
8.4m	56° 54' .83N. , 7° 27' .99W.
6.2m	56° 54' .56N. , 7° 29' .85W.
* 5.1m	56° 54' .42N. , 7° 34' .10W.
13.1m	56° 54' .36N. , 7° 27' .32W.
* 7m	56° 54' .25N. , 7° 30' .34W.

3.5m	56° 54' .13N. , 7° 34' .03W.
* 2.7m	56° 53' .99N. , 7° 32' .83W.
7m	56° 53' .24N. , 7° 33' .43W.
7.8m	56° 52' .64N. , 7° 29' .75W.
7.6m	56° 52' .44N. , 7° 33' .72W.
* 14.9m	56° 52' .30N. , 7° 31' .33W.
11m	56° 52' .27N. , 7° 29' .48W.
16.5m	56° 51' .69N. , 7° 31' .37W.
13.6m	56° 51' .65N. , 7° 33' .16W.
12.7m	56° 51' .56N. , 7° 32' .22W.

3.

<i>Depth</i>	<i>Position</i>
16.6m	56° 50' .95N. , 7° 31' .32W.
1.8m	56° 50' .81N. , 7° 34' .05W.
14.8m	56° 50' .64N. , 7° 32' .83W.
0.1m	56° 50' .61N. , 7° 36' .18W.
17.9m	56° 50' .30N. , 7° 36' .72W.
15.6m	56° 50' .10N. , 7° 32' .99W.
16.6m	56° 49' .66N. , 7° 33' .66W.
* 18.3m	56° 49' .58N. , 7° 34' .62W.
4m	56° 49' .47N. , 7° 38' .63W.
16.4m	56° 48' .80N. , 7° 35' .78W.
9.4m	56° 47' .77N. , 7° 37' .82W.
1.4m	56° 47' .73N. , 7° 38' .50W.
13.5m	56° 47' .72N. , 7° 36' .19W.
15m	56° 47' .05N. , 7° 39' .79W.

4. \*Indicates new or revised entry.
5. These changes will be included in a New Edition of Chart 2769 to be published September 2013 and the next New Editions of Charts 1795 and 1796.
6. Former Notice L526(P)/13 is cancelled.

#### Charts affected – SC5616

Temporary/Preliminary NMs

~~L3788(T)/13 SCOTLAND – West Coast – Loch Carron – Sgeir Golach Southwards and Bogha Dubh Sgeir Westwards – Buoyage. Beacons. Light beacons.~~

Source: Northern Lighthouse Board Notices 17/13 & 18/13

1. ~~Port hand light buoys have been temporarily established in the following positions:~~

<i>Buoy</i>	<i>Position</i>
Red can, <del>FL(2)R.6s</del>	<del>57° 20' .91N. , 5° 37' .96W.</del>
Red can, <del>FLR.10s</del>	<del>57° 21' .13N. , 5° 38' .91W.</del>

2. ~~The unlit beacons in positions 57° 20' 92N., 5° 37' 85W. and 57° 21' 20N., 5° 39' 00W. are being removed and will be replaced by light beacons. (All positions are referred to WGS84 Datum)~~

**Chart affected — SC5616**

---

**L4016/13 SCOTLAND — West Coast — Approaches to Inner Sound — Eilean Trodday — Automatic Identification System.**

Source: Northern Lighthouse Board

**Chart: SC5616-9 ETRS89 DATUM**

Insert Automatic Identification System, AIS, at light 57° 43' 62N. , 6° 17' 91W.

---

**L4375/13 SCOTLAND — Hebrides — South Uist — Loch Eynort — Depths.**

Source: UKHO

**Chart: SC5616 11 ETRS89 DATUM**

Insert depth 27<sub>s</sub> and extend 30m contour SE to enclose 57° 13' 39N. , 7° 15' 35W.

**Chart: SC5616-23 (plan D, Loch Eynort) WGS84 DATUM**

Insert	depth 1 <sub>s</sub> enclosed by 2m contour	(a) 57° 13' 476N. , 7° 18' 053W.
	depth 27 <sub>s</sub> enclosed by 30m contour	57° 13' 394N. , 7° 15' 348W.
	depth 3 <sub>g</sub> enclosed by 5m contour	(b) 57° 13' 369N. , 7° 16' 876W.
	depth 16 <sub>s</sub> enclosed by 20m contour	(c) 57° 12' 962N. , 7° 15' 626W.
Replace	depth 2 <sub>g</sub> with depth 1 <sub>a</sub> enclosed by 2m contour	57° 13' 827N. , 7° 19' 161W.
	depth 2 <sub>g</sub> with depth 2 <sub>i</sub>	57° 13' 598N. , 7° 18' 396W.
Delete	depth 10 <sub>s</sub> , adjacent to:	(a) above
	depth 9 <sub>s</sub> , adjacent to:	(b) above
	depth 43, adjacent to:	(c) above

---

**L4386/13 SCOTLAND — West Coast — Outer Hebrides — South Uist — Loch Boisdale — Rubha nan Eireannach Southwards — Light.**

Source: Northern Lighthouse Board

**Chart: SC5616-22 ETRS89 DATUM**





Insert	★ 2F.G(vert)	57° 09' 133N. , 7° 18' 184W.
Delete	former ★ 2F.G(vert)	57° 09' 128N. , 7° 18' 296W.

---





**L4578/13 SCOTLAND — West Coast — Loch Carron — Bogha Dubh Sgeir and Sgeir Golach — Beacons. Light-beacons.**

Note: Former Notice L3788(T)/13 is cancelled.

**Chart: SC5616-4 (plan A, Loch Duich to Loch Carron) WGS84 DATUM**

Replace  with  Fl.(2)R.6s 57° 20' ·92N. , 5° 37' ·86W.  
 with  Fl.10s 57° 21' ·19N. , 5° 38' ·98W.

**Chart: SC5616-18 (plan C, Upper Loch Carron) ETRS89 DATUM**

Replace  (3) with  Fl(2)R.6s4m2M 57° 20' ·92N. , 5° 37' ·85W.  
 (3) with  Fl.10s5m3M 57° 21' ·20N. , 5° 39' ·01W.

---

**L4595/13 SCOTLAND — Hebrides — Berneray — Barra Head — Automatic Identification System.**

Source: Northern Lighthouse Board

**Chart: SC5616-27 ETRS89 DATUM**

Insert Automatic Identification System, AIS, at light 56° 47' ·1N. , 7° 39' ·2W.

---

**L4968/13 SCOTLAND — West Coast — Sound of Eigg — Muck Eastwards — Marine farm.**

Source: Marine Scotland

**Chart: SC5616-1 (plan A, Point of Ardnamurchan to Sound of Arisaig) ETRS89 DATUM**

Insert limit of marine farm, pecked line, joining: 56° 50' ·80N. , 6° 12' ·72W.  
56° 50' ·47N. , 6° 12' ·46W.  
56° 50' ·40N. , 6° 12' ·76W.  
56° 50' ·73N. , 6° 13' ·02W.

**Chart: SC5616-16 ETRS89 DATUM**

Insert limit of marine farm, pecked line, joining: 56° 50' ·80N. , 6° 12' ·72W.  
56° 50' ·47N. , 6° 12' ·46W.  
56° 50' ·40N. , 6° 12' ·76W.  
56° 50' ·73N. , 6° 13' ·02W.

---

**L4969/13 SCOTLAND — Hebrides — South Harris — Stockinish Island Eastwards — Light.**

Source: Northern Lighthouse Board

**Chart: SC5616-10 (plan A, The Little Minch Northern Part) ETRS89 DATUM**

Insert  Fl.R.2M 57° 48' ·49N. , 6° 48' ·79W.

---

**L5444/13 SCOTLAND — West Coast — Sea of the Hebrides — The Small Isles — Oigh Sgeir — Hyskeir Lighthouse — Automatic Identification System.**

Source: Northern Lighthouse Board Notice 30/13



**Chart: SC5616-12** ETRS89 DATUM

Insert legend, AIS, at light 56° 58' ·16N. , 6° 40' ·84W.

**Chart: SC5616-13 (plan A, Oigh Sgeir to Barra)** ETRS89 DATUM

Insert legend, AIS, at light 56° 58' ·16N. , 6° 40' ·84W.

**Chart: SC5616-14** ETRS89 DATUM

Insert legend, AIS, at light 56° 58' ·16N. , 6° 40' ·84W.

**Chart: SC5616-27** ETRS89 DATUM

Insert legend, AIS, at light 56° 58' ·2N. , 6° 40' ·8W.

---

**L174/14 SCOTLAND — West Coast — Inner Sound — Pabay E — Wreck.**

Source: Stornoway Coastguard

**Chart: SC5616-4 (plan A, Loch Duich to Loch Carron)** WGS84 DATUM

Insert  57° 16' ·23N. , 5° 49' ·08W.

**Chart: SC5616-5** WGS84 DATUM

Insert  57° 16' ·23N. , 5° 49' ·08W.

---

**L935/14 SCOTLAND — Hebrides — Benbecula — Rarnish E — Marine farm.**

Source: Marine Scotland

**Chart: SC5616-11** ETRS89 DATUM

Insert  57° 25' ·00N. , 7° 11' ·50W.

---

**L1169/14 SCOTLAND — West Coast — Passage of Tiree — Skerryvore — Automatic Identification System.**

Source: Northern Lighthouse Board

**Chart: SC5616-27** ETRS89 DATUM


Insert Automatic Identification System, AIS, at light 56° 19' ·4N. , 7° 06' ·9W.

---

**L1517/14 SCOTLAND — West Coast — Outer Hebrides — Barra — North Bay S and W and Garbh Lingay S — Marine farms.**

Source: Marine Scotland

**Chart: SC5616-13 (panel A, Oigh Sgeir to Barra)** ETRS89 DATUM

Insert  57° 00' ·26N. , 7° 22' ·27W.  
56° 59' ·79N. , 7° 23' ·62W.  
56° 59' ·51N. , 7° 22' ·95W.

---

**L1732/14 SCOTLAND — Hebrides — North Uist NW — Haskeir Island — Automatic Identification System.**

Source: Northern Lighthouse Board Notice 7/14

**Chart: SC5616-27** ETRS89 DATUM

Insert Automatic Identification System, AIS, at light 57° 41' ·9N. , 7° 41' ·3W.

---

**L1733/14 SCOTLAND — Hebrides — South Uist — Loch Boisdale — Calvay — Automatic Identification System.**

Source: Northern Lighthouse Board

**Chart: SC5616-13 (panel A, Oigh Sgeir to Barra)** ETRS89 DATUM

Insert Automatic Identification System, AIS, at light 57° 08' ·54N. , 7° 15' ·39W.

**Chart: SC5616-22** ETRS89 DATUM

Insert Automatic Identification System, AIS, at light 57° 08' ·54N. , 7° 15' ·39W.

---

**L2072/14 SCOTLAND — West Coast — Loch Gairloch — Sgeir Dhubh Mhór S — Buoy.**

Source: Northern Lighthouse Board

**Chart: SC5616-19 (panel A, Gairloch)** ETRS89 DATUM

Insert  57° 42' ·024N. , 5° 42' ·717W.

---

**L2513/14 SCOTLAND — West Coast — Isle of Skye — Entrance to Loch Sligachan — Rubh'an Tòrra Mhóir S — Buoy.**

Source: Northern Lighthouse Board

**Chart: SC5616-5** WGS84 DATUM

Amend light-buoy to, *Q.G* 57° 18' ·95N. , 6° 06' ·06W.

---

Temporary/Preliminary NMs

**~~L2736(P)/14 SCOTLAND — West Coast — Stornoway to Barra — Submarine cables.~~**

~~Source: Orange Marine~~

- ~~1. Work has begun laying telecommunication cables until August 2014, joining the following positions (WGS84 Datum):~~
- ~~2. Stornoway — Branahaie Bay to Ullapool — Ardmair~~

~~58° 12' ·27N. , 6° 18' ·65W. (shore)~~

~~58° 12' ·11N. , 6° 18' ·38W.~~

~~58° 10' ·54N. , 6° 17' ·59W.~~

~~58° 09' ·89N. , 6° 16' ·84W.~~

~~58° 08' 89N., 6° 14' 71W.~~  
~~57° 58' 69N., 5° 41' 29W.~~  
~~57° 57' 05N., 5° 36' 62W.~~  
~~57° 56' 24N., 5° 32' 75W.~~  
~~57° 56' 14N., 5° 28' 82W.~~  
~~57° 56' 93N., 5° 21' 68W.~~  
~~57° 56' 42N., 5° 17' 31W.~~  
~~57° 56' 00N., 5° 13' 40W.~~  
~~57° 56' 03N., 5° 11' 81W. (shore)~~

3. ~~South Harris – Leverburgh SE to North Uist – Lochmaddy~~

~~57° 45' 19N., 7° 00' 15W. (shore)~~  
~~57° 45' 02N., 7° 00' 22W.~~  
~~57° 44' 77N., 7° 00' 08W.~~  
~~57° 43' 53N., 6° 58' 81W.~~  
~~57° 42' 63N., 6° 57' 68W.~~  
~~57° 42' 01N., 6° 57' 25W.~~  
~~57° 41' 63N., 6° 57' 40W.~~  
~~57° 38' 60N., 7° 00' 35W.~~  
~~57° 37' 03N., 7° 02' 85W.~~  
~~57° 36' 57N., 7° 03' 92W.~~  
~~57° 36' 22N., 7° 05' 56W.~~  
~~57° 36' 21N., 7° 06' 33W.~~  
~~57° 36' 05N., 7° 07' 84W.~~  
~~57° 36' 02N., 7° 08' 68W.~~  
~~57° 35' 87N., 7° 09' 28W.~~  
~~57° 35' 86N., 7° 09' 47W. (shore)~~

4. ~~Isle of Skye – Dunvegan to South Uist – Sandwick~~

~~57° 26' 16N., 6° 34' 86W. (shore)~~  
~~57° 26' 16N., 6° 35' 00W.~~  
~~57° 26' 43N., 6° 35' 50W.~~  
~~57° 26' 72N., 6° 35' 79W.~~  
~~57° 27' 04N., 6° 36' 76W.~~  
~~57° 27' 46N., 6° 37' 82W.~~  
~~57° 28' 90N., 6° 39' 94W.~~  
~~57° 31' 37N., 6° 42' 76W.~~  
~~57° 31' 69N., 6° 44' 66W.~~  
~~57° 32' 01W., 6° 46' 20W.~~  
~~57° 31' 41N., 6° 49' 15W.~~  
~~57° 30' 31N., 6° 52' 10W.~~  
~~57° 27' 00N., 6° 57' 76W.~~  
~~57° 23' 83N., 7° 06' 18W.~~  
~~57° 22' 71N., 7° 11' 03W.~~  
~~57° 22' 62N., 7° 14' 07W.~~  
~~57° 22' 73N., 7° 14' 74W.~~

~~57° 23' 53N., 7° 17' 11W.  
57° 23' 86N., 7° 19' 67W. (shore)~~

~~5. South Uist – Ludag W to Eriskay – Balla~~

~~57° 06' 17N., 7° 20' 99W. (shore)  
57° 06' 00N., 7° 20' 77W.  
57° 05' 69N., 7° 19' 96W.  
57° 05' 25N., 7° 19' 23W.  
57° 05' 12N., 7° 19' 17W.  
57° 05' 00N., 7° 18' 85W.  
57° 04' 99N., 7° 18' 64W. (shore)~~

~~6. Eriskay – Coilleag to Barra – Tràigh Mhór~~

~~57° 04' 35N., 7° 18' 26W. (shore)  
57° 04' 36N., 7° 18' 68W.  
57° 03' 37N., 7° 19' 04W.  
57° 03' 01N., 7° 19' 43W.  
57° 02' 54N., 7° 20' 55W.  
57° 02' 01N., 7° 23' 10W.  
57° 01' 23N., 7° 25' 59W.  
57° 01' 01N., 7° 25' 96W.  
57° 00' 91N., 7° 25' 87W. (shore)~~

~~7. Vessels are requested not to anchor or trawl in the vicinity of the cable route.~~

~~8. Charts will be updated when the works are complete.~~

~~Charts affected – SC5616~~

---

Temporary/Preliminary NMs

**L2737(P)/14 SCOTLAND — West Coast — Isle of Skye to Oban — Submarine cables.**

Source: Orange Marine

1. Work has begun laying telecommunication cables until November 2014, joining the following approximate positions (WGS84 Datum):
2. Isle of Skye - Ardsvar to Mallaig - Mallaigvaig

~~57° 03' 85N., 5° 53' 92W. (shore)  
57° 03' 37N., 5° 53' 79W.  
57° 02' 61N., 5° 52' 23W.  
57° 01' 20N., 5° 48' 65W.  
57° 00' 91N., 5° 48' 30W.  
57° 00' 81N., 5° 48' 36W. (shore)~~

3. Loch Linnhe - Corran Narrows N

~~56° 43' 75N., 5° 13' 76W. (shore)  
56° 44' 40N., 5° 14' 87W. (shore)~~

4. Ardnamurchan - Kilchoan Bay E - Mingary Pier to Isle of Mull - Tobermory

56° 41' .40N. , 6° 5' .73W. (shore)

56° 41' .26N. , 6° 5' .36W.

56° 41' .15N. , 6° 5' .27W.

56° 39' .76N. , 6° 5' .05W.

56° 39' .41N. , 6° 4' .82W.

56° 38' .60N. , 6° 3' .73W.

56° 37' .92N. , 6° 3' .24W.

56° 37' .63N. , 6° 3' .33W.

56° 37' .43N. , 6° 3' .63W.

56° 37' .28N. , 6° 4' .20W. (shore)

5. Isle of Mull - Calgary to Tیره - Scarinish

56° 34' .81N. , 6° 16' .87W. (shore)

56° 33' .68N. , 6° 20' .37W.

56° 33' .03N. , 6° 23' .83W.

56° 31' .25N. , 6° 29' .97W.

56° 29' .81N. , 6° 47' .31W.

56° 29' .83N. , 6° 48' .04W.

56° 29' .88N. , 6° 48' .29W.

56° 29' .95N. , 6° 48' .45W.

56° 29' .98N. , 6° 48' .45W. (shore)

6. Oban - Ganavan Bay to Isle of Mull - Duart Bay

56° 26' .27N. , 5° 28' .20W. (shore)

56° 26' .51N. , 5° 28' .57W.

56° 26' .54N. , 5° 29' .07W.

56° 26' .40N. , 5° 34' .54W.

56° 26' .47N. , 5° 36' .04W.

56° 26' .48N. , 5° 36' .92W.

56° 26' .67N. , 5° 37' .51W.

56° 27' .30N. , 5° 38' .19W.

56° 27' .61N. , 5° 39' .09W.

56° 27' .61N. , 5° 39' .58W.

56° 27' .41N. , 5° 39' .81W.

56° 26' .89N. , 5° 39' .75W. (shore)

7. Vessels are requested not to anchor or trawl in the vicinity of the cable route.

8. Charts will be updated when the works are complete.

**Charts affected – SC5611 and SC5616**

---

**Notices to Mariners - Weekly Edition 30/2014 Scotland - West Coast, Inner Sound.  
— Chart 2209 — New Edition Announcement.**

**Charts SC5616-3A, SC5616-4A, SC5616-4B, SC5616-4C, SC5616-5 and SC5616-6 WGS84 DATUM**

The following changes were published in the new edition of chart 2209, which is the source chart for the above folio sheets:

*Includes changes to depths from latest British Government surveys. The horizontal datum of this chart has been transferred to the WGS84 compatible datum, ETRS89. Mariners should therefore navigate with caution on sheets SC5616-3A, SC5616-4A, SC5616-4B, SC5616-4C, SC5616-5 and SC5616-6 and be aware that any subsequent Notices to Mariners applied to these sheets are issued for information only.*

These changes will be included in the next new edition of SC5616.

---

**L3248/14 SCOTLAND — West Coast — Loch Carron — Slumbay Island NE and Strome Islands W — Depths. Drying heights. Rock.**

Source: Bob Bradfield

**Chart: SC5616-18 (panel C, Upper Loch Carron) ETRS89 DATUM**

Replace depth, 1, with  57° 21' ·12N. , 5° 36' ·08W.

---

**L3440/14 SCOTLAND — Hebrides — East Loch Tarbert — Scalpay — Eilean Glas — Automatic Identification System.**

Source: Northern Lighthouse Board Notice 12/14

**Chart: SC5616-10 (panel A, The Little Minch Northern Part) ETRS89 DATUM**

Insert Automatic Identification System, AIS, at light 57° 51' ·42N. , 6° 38' ·51W.

**Chart: SC5616-25 ETRS89 DATUM**

Insert Automatic Identification System, AIS, at light 57° 51' ·410N. , 6° 38' ·515W.

**Chart: SC5616-27 ETRS89 DATUM**


Insert Automatic Identification System, AIS, at light 57° 51' ·4N. , 6° 38' ·7W.

---

**L4045/14 SCOTLAND — Hebrides — North Uist — Loch Maddy — Light. Pontoons.**

Source: Northern Lighthouse Board

**Chart: SC5616-24 WGS84 DATUM**

Insert  Fl.R.3s2.5m2M (a) 57° 35' ·798N. , 7° 09' ·447W.  
pontoon, single firm line, joining: 57° 35' ·840N. , 7° 09' ·472W.  
(shore)  
57° 35' ·820N. , 7° 09' ·512W.  
(a) above  
and

57° 35' ·808N. , 7° 09' ·440W.

57° 35' ·790N. , 7° 09' ·470W.

---

**L4186/14 SCOTLAND — Hebrides — South Uist — Ushenish — Light.**

Source: Northern Lighthouse Board Notice 17/14

**Chart: SC5616-11 ETRS89 DATUM**

Amend light to, Fl.20s54m19M (a) 57° 17' ·89N. , 7° 11' ·56W.

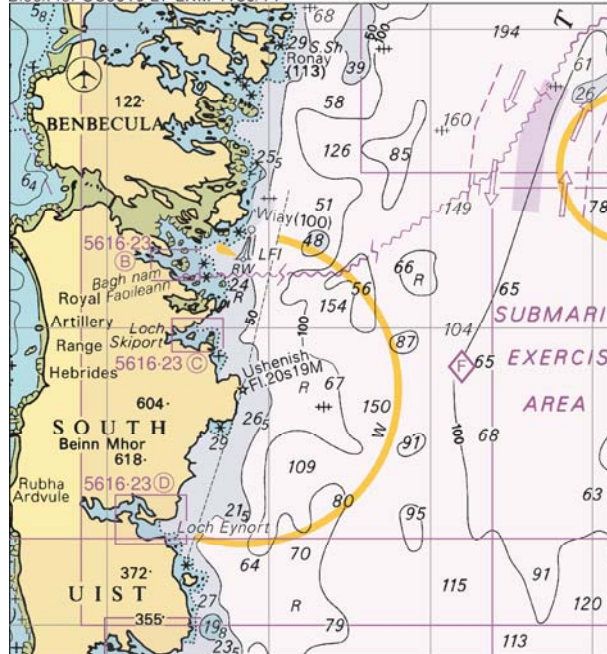
sectors at light as follows: (a) above

W 193° - 018° (185°)

**Chart: SC5616-27 ETRS89 DATUM**

Insert the accompanying block, showing amendments to light, centred on: 57° 20' ·0N. , 7° 07' ·4W.

Block for SC5616-27 LNM 4186/14




---

**L285/15 SCOTLAND — West Coast — Sound of Sleat — Mallaig NE to Rubha Phòile — Submarine cable.**

Source: Orange Marine

**Chart: SC5616-2 ETRS89 DATUM**

Insert submarine cable, , joining: 57° 01' ·53N. , 5° 49' ·04W.

(E border)


57° 01' ·91N. , 5° 50' ·58W.

57° 02' ·30N. , 5° 51' ·39W.

57° 02' ·80N. , 5° 52' ·78W.

(N border)

**Chart: SC5616-3 (panel A, Mallaig to Glenelg) ETRS89 DATUM**

Insert submarine cable, , joining:


57° 00' ·79N. , 5° 48' ·37W. (shore)  
 57° 01' ·11N. , 5° 48' ·27W.  
 57° 01' ·50N. , 5° 48' ·93W.  
 57° 01' ·91N. , 5° 50' ·58W.  
 57° 02' ·30N. , 5° 51' ·39W.  
 57° 03' ·07N. , 5° 53' ·50W.  
 57° 03' ·27N. , 5° 53' ·73W.  
 57° 03' ·49N. , 5° 53' ·81W.  
 57° 03' ·66N. , 5° 54' ·09W.  
 57° 03' ·84N. , 5° 53' ·92W. (shore)

**L468/15 SCOTLAND — Hebrides — North Uist — Lochmaddy to South Harris — Leverburgh SE — Submarine cable. Note.**

Source: Orange Marine


*Note:* Charts 2802, 2825 and 2841 are to be deleted from the list of charts affected by Notice L2736(P)/14.

**Chart: SC5616-10 (panel A, The Little Minch Northern Part) ETRS89 DATUM**

Insert submarine cable, , joining:

57° 40' ·33N. , 6° 58' ·80W.  
 (limit of plan)  
 57° 41' ·74N. , 6° 57' ·36W.  
 57° 42' ·15N. , 6° 57' ·29W.  
 57° 43' ·00N. , 6° 58' ·12W.  
 57° 43' ·56N. , 6° 59' ·23W.  
 57° 44' ·61N. , 7° 00' ·10W.  
 57° 45' ·04N. , 7° 00' ·28W.  
 57° 45' ·19N. , 7° 00' ·15W. (shore)

**Chart: SC5616-24 WGS84 DATUM**

Insert submarine cable, , joining:

57° 35' ·882N. , 7° 09' ·420W. (shore)  
 57° 35' ·896N. , 7° 09' ·414W.  
 57° 35' ·875N. , 7° 09' ·083W.  
 57° 35' ·963N. , 7° 08' ·638W.  
 57° 36' ·020N. , 7° 07' ·482W.  
 57° 36' ·192N. , 7° 06' ·661W.  
 57° 36' ·199N. , 7° 05' ·676W.  
 57° 36' ·276N. , 7° 04' ·967W.  
 57° 36' ·537N. , 7° 03' ·931W.



57° 36' ·767N. , 7° 03' ·566W.


(E border)

---

**L919/15 SCOTLAND — West Coast — Dunvegan to South Uist — Submarine cable.**

Source: Orange Marine

**Chart: SC5616·20 ETRS89 DATUM**

Insert **submarine cable**, , joining:

57° 26' ·15N. , 6° 34' ·86W. (shore)

57° 26' ·16N. , 6° 35' ·05W.

57° 26' ·30N. , 6° 35' ·35W.

57° 26' ·45N. , 6° 35' ·49W.

57° 26' ·71N. , 6° 35' ·88W.

57° 28' ·10N. , 6° 39' ·03W.

57° 30' ·38N. , 6° 41' ·65W.


57° 31' ·16N. , 6° 42' ·13W.

57° 31' ·58N. , 6° 43' ·07W.

57° 31' ·59N. , 6° 43' ·20W.

(W border)

**Chart: SC5616·23 (panel B, Loch Carnan) WGS84 DATUM**

Insert **submarine cable**, , joining:

57° 22' ·656N. , 7° 14' ·210W.

(E border)

57° 22' ·659N. , 7° 14' ·393W.

57° 22' ·690N. , 7° 14' ·637W.

(N border)

---

**Notices to Mariners - Weekly Edition 09/2015 International Chart Series, Scotland – West Coast, The Little Minch, Northern Part.**  
**— Chart 1757 — New Edition Announcement.**

**Chart SC5616·9 and SC5616·10 WGS84 DATUM**

The following changes were published in the new edition of chart 1757, which is the source chart for the above folio sheets:

*Includes significant safety-related information as follows: a new submarine cable. Mariners should therefore navigate with caution on sheets SC5616·9 and SC5616·10 and be aware that any subsequent Notices to Mariners applied to these sheets are issued for information only.*

These changes will be included in the next new edition of SC5616.

---

**L1116/15 SCOTLAND — West Coast — Rona — Loch a' Bhràige E — Rona Lighthouse — Automatic Identification System.**

Source: Northern Lighthouse Board

**Chart: SC5616-7 (panel A, Inner Sound and Sound of Raasay – Northern Part) WGS84 DATUM**

Insert **Automatic Identification System, AIS**, at light 57° 34' ·69N. , 5° 57' ·54W.

**Chart: SC5616-27 ETRS89 DATUM**

Insert **Automatic Identification System, AIS**, at light 57° 34' ·7N. , 5° 57' ·5W.

---

**Notices to Mariners - Weekly Edition 10/2015 International Chart Series, Scotland - West Coast, The Little Minch, Southern Part.**

— **Chart 1795 — New Edition Announcement.**

**Chart SC5616-11, SC5616-12 and SC5616-13 WGS84 DATUM**

The following changes were published in the new edition of chart 1795, which is the source chart for the above folio sheets:

*Includes significant safety-related information as follows: new submarine cables and changes to depths from the latest British Government surveys. Mariners should therefore navigate with caution on sheets SC5616-11, SC5616-12 and SC5616-13 and be aware that any subsequent Notices to Mariners applied to these sheets are issued for information only.*

These changes will be included in the next new edition of SC5616.

---

**Notices to Mariners - Weekly Edition 10/2015 Scotland - West Coast - Outer Hebrides, Sound of Barra.**

— **Chart 2770 — New Edition Announcement.**

**Chart SC5616-13B and SC5616-22 WGS84 DATUM**

The following changes were published in the new edition of chart 2770, which is the source chart for the above folio sheets:

*Includes significant safety-related information as follows: new submarine cables in the Sound of Barra and harbour developments at Loch Boisdale. Mariners should therefore navigate with caution on sheets SC5616-13B and SC5616-22 and be aware that any subsequent Notices to Mariners applied to these sheets are issued for information only.*

These changes will be included in the next new edition of SC5616.

---

**L1303/15 SCOTLAND — West Coast — Loch Carron — Airigh-drishaig S — Marine farm.**

Source: The Crown Estate

**Chart: SC5616·4 (panel A, Loch Duich to Loch Carron) ETRS89 DATUM**

Insert  57° 21' ·66N. , 5° 42' ·82W.

**Chart: SC5616·5 ETRS89 DATUM**

Insert  57° 21' ·66N. , 5° 42' ·82W.

---

**Notices to Mariners - Weekly Edition 14/2015 International Chart Series, British Isles, Scotland - West Coast.**

**— Chart 2635 — New Edition Announcement.**

**Chart SC5616·27 WGS84 DATUM**

The following changes were published in the new edition of chart 2635, which is the source chart for the above folio sheet:

*Includes significant safety-related information as follows: new submarine cables and changes to depths from the latest British Government surveys. Mariners should therefore navigate with caution on sheet SC5616·27 and be aware that any subsequent Notices to Mariners applied to this sheet are issued for information only.*

These changes will be included in the next new edition of SC5616.

---

**L1828/15 SCOTLAND — West Coast — Sound of Mull — Depths.**

Source: UKHO

*Note:* Former Notice L1402(P)/12 is cancelled.

**Chart: SC5616·14 ETRS89 DATUM**

Insert depth, 39, enclosed by 50m contour 56° 41' ·10N. , 6° 13' ·70W.

depth, 15<sub>6</sub>, with seabed type, R, and extend 20m contour

SE to enclose (a) 56° 40' ·74N. , 6° 16' ·25W.

Delete depth, 16<sub>2</sub>, with seabed type, R, close NE of: (a) above

---

**L2339/15 SCOTLAND — West Coast — Inner Sound — Beacons. Light-beacons.**

Source: Northern Lighthouse Board Notices 8 and 9/15

**Chart: SC5616·5 ETRS89 DATUM**

Replace  (9), with  Q.3M 57° 19' ·82N. , 5° 56' ·50W.

 (9), with  Fl(3)10s 57° 15' ·69N. , 5° 52' ·25W.

---

**L2531/15 SCOTLAND — Hebrides — Tarbert Harbour — Outfall.**

Source: Fairhurst

**Chart: SC5616-26 (panel B, Tarbert) ETRS89 DATUM**

Insert outfall, -----, joining: 57° 53' ·813N. , 6° 48' ·170W.  
(shore)  
57° 53' ·740N. , 6° 47' ·920W.  
57° 53' ·740N. , 6° 47' ·870W.

---

**Notices to Mariners - Weekly Edition 26/2015 International Chart Series, Scotland - West Coast, Barra Head to Point of Ardnamurchan.  
— Chart 1796 — New Edition Announcement.**

**Charts SC5616-13 and SC5616-14 WGS84 DATUM**

The following changes were published in the new edition of chart 1796, which is the source chart for the above folio sheets:

*Includes changes to depths from the latest British Government surveys. Mariners should therefore navigate with caution on sheets SC5616-13 and SC5616-14 and be aware that any subsequent Notices to Mariners applied to these sheets are issued for information only.*

These changes will be included in the next new edition of SC5616.

---

**L3973/15 SCOTLAND — West Coast — Loch Alsh and Loch Duich — Depths.**

Source: British Geological Survey

**Chart: SC5616-4 (panel A, Loch Duich to Loch Carron) ETRS89 DATUM**

Insert	depth, 5 <sub>7</sub> , and extend 10m contour N to enclose	(a) 57° 16' ·31N. , 5° 31' ·54W.
	depth, 5 <sub>8</sub>	(b) 57° 13' ·61N. , 5° 24' ·95W.
	depth, 6 <sub>5</sub> , and extend 10m contour NW to enclose	(c) 57° 13' ·41N. , 5° 25' ·39W.
Replace	depth, 9 <sub>5</sub> , with depth, 8 <sub>5</sub>	57° 16' ·25N. , 5° 35' ·08W.
Delete	depth, 13 <sub>7</sub> , close E of:	(a) above
	depth, 27, and associated 20m contour, close W of:	(a) above
	depth, 7 <sub>6</sub> , close S of:	(b) above
	depth, 7 <sub>9</sub> , close SE of:	(c) above

**Chart: SC5616-18 (panel B, Loch Alsh) ETRS89 DATUM**

Insert	depth, 5 <sub>7</sub> , and extend 10m contour N to enclose	57° 16' ·31N. , 5° 31' ·54W.
Replace	depth, 9 <sub>5</sub> , with depth, 8 <sub>5</sub>	57° 16' ·25N. , 5° 35' ·08W.

---

**Notices to Mariners - Weekly Edition 37/2015 Scotland - West Coast, Outer Hebrides, Lochs on the East Coast of Uist.  
— Chart 2825 — New Edition Announcement.**

**Charts SC5616-23 and SC5616-24 WGS84 DATUM**

The following changes were published in the new edition of chart 2825, which is the source chart for the above folio sheets:

*Includes changes to depths from the latest British Government and Harbour Authority surveys. Coastline has been amended throughout from the latest aerial photography. The Horizontal Datum has been transferred to a WGS84 compatible datum. Mariners should therefore navigate with caution on sheets SC5616-23 and SC5616-24 and be aware that any subsequent Notices to Mariners applied to these sheets are issued for information only.*

These changes will be included in the next new edition of SC5616.

---

**L5108/15 SCOTLAND — West Coast — Loch Carron — Rocks. Depth.**

Source: Plockton Harbour Association

**Chart: SC5616-4 (panel A, Loch Duich to Loch Carron) ETRS89 DATUM**

Insert  (a) 57° 20' .46N. , 5° 38' .20W.

Delete depth, 1, with seabed type, R, close W of: (a) above

**Chart: SC5616-18 (panel C, Upper Loch Carron) ETRS89 DATUM**

Insert  (Q<sub>2</sub>) (a) 57° 20' .46N. , 5° 38' .20W.

 57° 20' .47N. , 5° 38' .24W.

Delete depth, 1, with seabed type, R, close W of: (a) above

---

Temporary/Preliminary NMs

**L58(T)/16 SCOTLAND — West Coast — Inner Sound — Rona SE — Scientific instruments.**

Source: UKHO

1. Hydrophones and associated cables have been established, on the seabed, in the following positions:

57° 29' .29N. , 5° 57' .71W.

57° 29' .68N. , 5° 56' .16W.

57° 29' .83N. , 5° 57' .66W.

57° 29' .84N. , 5° 57' .53W.

57° 30' .01N. , 5° 56' .69W.

57° 30' .17N. , 5° 55' .94W.

57° 30' .57N. , 5° 56' .63W.

57° 30' .77N. , 5° 56' .87W.

2. They are expected to remain in position for approximately 6 months.
3. Mariners are advised to navigate with caution in the area.(WGS84 Datum)

**Charts affected – SC5616**

---

**Notices to Mariners - Weekly Edition 03/2016 Scotland - West Coast, Approaches to Inner Sound.**

— **Chart 2210 — New Edition Announcement.**

**Charts SC5616-6, SC5616-7 and SC5616-8 WGS84 DATUM**

The following changes were published in the new edition of chart 2210, which is the source chart for the above folio sheets:

*Includes changes to depths from the latest British Government surveys. The horizontal datum of this chart has been transferred to the WGS84 compatible Datum, ETRS89. Mariners should therefore navigate with caution on sheets SC5616-6, SC5616-7 and SC5616-8 and be aware that any subsequent Notices to Mariners applied to these sheets are issued for information only.*





These changes will be included in the next new edition of SC5616.

---

**L1192/16 SCOTLAND — West Coast — Inner Sound — Sgeir Thraid and Sgeir Ghobhlach — Light-beacons.**

Source: Northern Lighthouse Board

**Chart: SC5616-5 ETRS89 DATUM**

Replace		Q.3M with		Q.3M	57° 19' .82N. , 5° 56' .50W.
		FI(3)10s with		FI(3)10s	57° 15' .69N. , 5° 52' .25W.

---

**Notices to Mariners - Weekly Edition 12/2016 British Isles, Scotland - West Coast.**

— **Chart 2635 — New Edition Announcement.**

**Chart SC5616-27 WGS84 DATUM**

The following changes were published in the new edition of chart 2635, which is the source chart for the above folio sheet:

*Includes updates to the latest Territorial Sea Baseline. (This chart is now not to be used for navigation). Mariners should therefore navigate with caution on sheet SC5616-27 and be aware that any subsequent Notices to Mariners applied to this sheet are issued for information only.*

These changes will be included in the next new edition of SC5616.

---

**L3064/16 SCOTLAND — West Coast — Sea of the Hebrides — Canna SW — Depths.**

Source: British Geological Survey

**Chart: SC5616-12 ETRS89 DATUM**

Insert	depth, 17 <sub>9</sub> , and extend 20m contour NW to enclose	(a) 57° 04' ·30N. , 6° 35' ·57W.
	depth, 18 <sub>2</sub> , enclosed by 20m contour	(b) 57° 03' ·75N. , 6° 37' ·98W.
	depth, 20 <sub>6</sub> , and extend 30m approximate contour NE to enclose	57° 01' ·92N. , 6° 37' ·08W.
	depth, 19 <sub>7</sub> , enclosed by 20m contour	(c) 57° 01' ·19N. , 6° 36' ·81W.
	depth, 8 <sub>6</sub> , enclosed by 10m contour	57° 00' ·90N. , 6° 36' ·82W.
Replace	depth, 17 <sub>7</sub> , with depth, 16	56° 56' ·96N. , 6° 42' ·63W.
Delete	depth, 19 <sub>8</sub> , close SE of:	(a) above
	depth, 20 <sub>9</sub> , close SE of:	(b) above
	depth, 23, close W of:	(c) above

**Chart: SC5616-13 (panel A, Oigh Sgeir to Barra) ETRS89 DATUM**

Insert	depth, 17 <sub>9</sub> , and extend 20m contour NW to enclose	(a) 57° 04' ·30N. , 6° 35' ·57W.
	depth, 18 <sub>2</sub> , enclosed by 20m contour	(b) 57° 03' ·75N. , 6° 37' ·98W.
	depth, 20 <sub>6</sub> , and extend 30m approximate contour NE to enclose	57° 01' ·92N. , 6° 37' ·08W.
	depth, 19 <sub>7</sub> , enclosed by 20m contour	(c) 57° 01' ·19N. , 6° 36' ·81W.
	depth, 8 <sub>6</sub> , enclosed by 10m contour	57° 00' ·90N. , 6° 36' ·82W.
Replace	depth, 17 <sub>7</sub> , with depth, 16	56° 56' ·96N. , 6° 42' ·63W.
Delete	depth, 19 <sub>8</sub> , close SE of:	(a) above
	depth, 20 <sub>9</sub> , close SE of:	(b) above
	depth, 23, close W of:	(c) above

**Chart: SC5616-14 ETRS89 DATUM**

Insert	depth, 8 <sub>6</sub> , enclosed by 10m contour	57° 00' ·90N. , 6° 36' ·82W.
Replace	depth, 17 <sub>7</sub> , with depth, 16	56° 56' ·96N. , 6° 42' ·63W.

**Chart: SC5616-27 ETRS89 DATUM**

Replace	depth, 17 <sub>7</sub> , with depth, 16	56° 57' ·0N. , 6° 42' ·6W.
---------	---	----------------------------

---

**L3144/16 SCOTLAND — West Coast — Isle of Skye — Loch Snizort — Marine farm.**

Source: Marine Scotland

**Chart: SC5616-9 ETRS89 DATUM**

Insert  57° 33' ·53N. , 6° 24' ·21W.

**Chart: SC5616·19 (PanelC, Uig) ETRS89 DATUM**

Insert limit of marine farm, pecked line, joining: 57° 33' ·73N. , 6° 24' ·10W.  
57° 33' ·67N. , 6° 24' ·50W.  
57° 33' ·32N. , 6° 24' ·30W.  
57° 33' ·37N. , 6° 23' ·93W.

---

**L3190/16 SCOTLAND — Hebrides — Benbecula — Loch Uiskevagh — Marine farm.**

Source: Marine Scotland

**Chart: SC5616·11 ETRS89 DATUM**

Insert  57° 26' ·73N. , 7° 11' ·92W.

---

**Notices to Mariners - Weekly Edition 27/2016 Scotland - West Coast, Outer Hebrides, Sound of Barra.  
— Chart 2770 — New Edition Announcement.**

**Charts SC5616·13 and SC5616·22 WGS84 DATUM**

The following changes were published in the new edition of chart 2770, which is the source chart for the above folio sheets:

*Includes significant safety-related information as follows: new harbour limits and changes to harbour developments, depths and dredged areas within Loch Boisdale. Mariners should therefore navigate with caution on sheets SC5616·13 and SC5616·22 and be aware that any subsequent Notices to Mariners applied to these sheets are issued for information only.*

These changes will be included in the next new edition of SC5616.

---

**L3575/16 SCOTLAND — West Coast — Haskeir Island NW — Depths.**

Source: mv Franklin

**Chart: SC5616·27 ETRS89 DATUM**

Insert depth, 37 (a) 57° 48' ·3N. , 7° 56' ·0W.  
Delete depth, 42, close NE of: (a) above

---

**Notices to Mariners - Weekly Edition 34/2016 Scotland - West Coast, Inner Sound.**



— **Chart 2209** — **New Edition Announcement.**

**Charts SC5616-3, SC5616-4, SC5616-5 and SC5614-6** WGS84 DATUM

The following changes were published in the new edition of chart 2209, which is the source chart for the above folio sheets:

*Includes significant safety-related information as follows: changes to the limits of the British Underwater Test and Evaluation Centre (B.U.T.E.C.) Range. Mariners should therefore navigate with caution on sheets SC5616-3, SC5616-4, SC5616-5 and SC5614-6 and be aware that any subsequent Notices to Mariners applied to these sheets are issued for information only.*

These changes will be included in the next new edition of SC5616.

---

**Notices to Mariners - Weekly Edition 34/2016 Scotland - West Coast, Approaches to Inner Sound.**

— **Chart 2210** — **New Edition Announcement.**

**Charts SC5616-6, SC5616-7 and SC5616-8** WGS84 DATUM

The following changes were published in the new edition of chart 2210, which is the source chart for the above folio sheets:

*Includes significant safety-related information as follows: changes to the limits of the British Underwater Test and Evaluation Centre (B.U.T.E.C.) Range. Mariners should therefore navigate with caution on sheets SC5616-6, SC5616-7, and SC5616-8 and be aware that any subsequent Notices to Mariners applied to these sheets are issued for information only.*

These changes will be included in the next new edition of SC5616.

---

**L4618/16 SCOTLAND — West Coast — Kyle Akin — Lights.**

Source: Fairhurst and Northern Lighthouse Board

**Chart: SC5616-18 (panel A, Kyle Akin)** ETRS89 DATUM

Insert	★ Iso.G.4s (Mar-Oct)	(a) 57° 16' ·762N. , 5° 43' ·045W.
Delete	★ 2F.G(vert) (Apr-Sep), close NW of:	(a) above

---

**L4960/16 SCOTLAND — West Coast — Loch Nevis — Marine farm.**

Source: Marine Scotland

**Chart: SC5616-3 (panel A, Mallaig to Glenelg)** ETRS89 DATUM

Insert limit of marine farm, pecked line, joining:

56° 59' .02N. , 5° 40' .50W.

56° 58' .82N. , 5° 39' .92W.

56° 58' .66N. , 5° 40' .12W.

56° 58' .86N. , 5° 40' .70W.

---

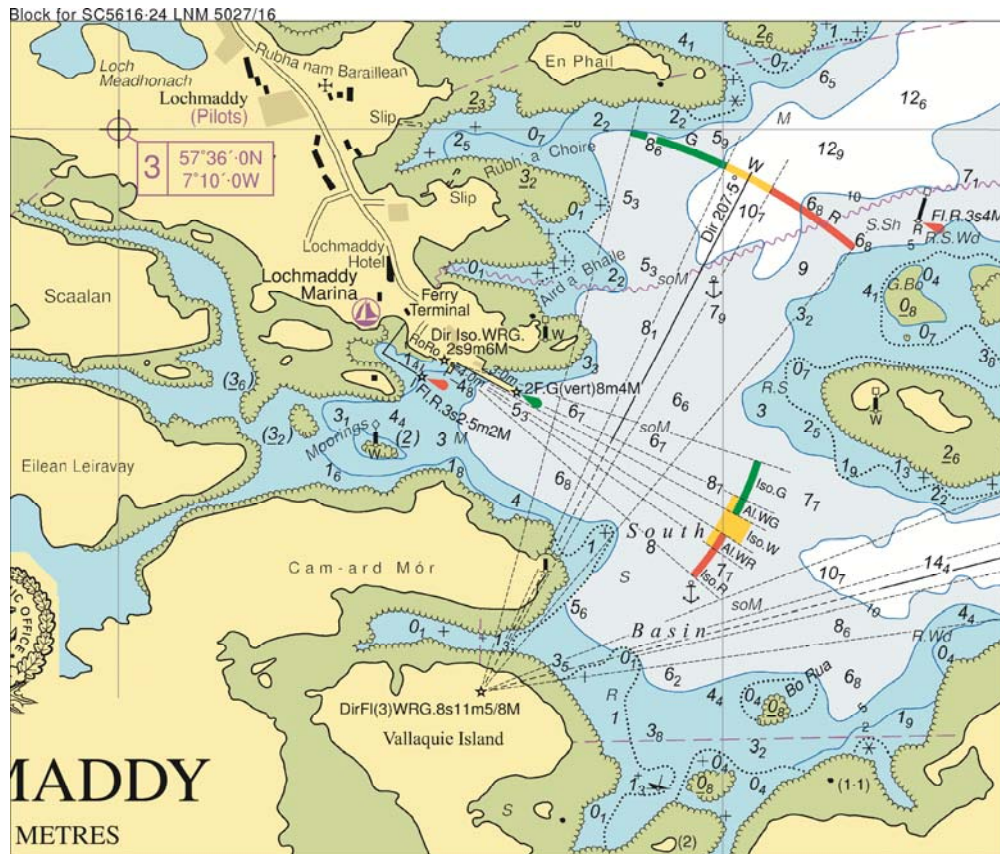
**L5027/16 SCOTLAND — Hebrides — Loch Maddy — NM Block. Lights.  
Leading line.**

Source: Comhairle Nan Eilean Siar

**Chart: SC5616·24 ETRS89 DATUM**

Insert the accompanying block, centred on:

57° 35' .72N. , 7° 09' .36W.



---

Temporary/Preliminary NMs

**L5685(T)/16 SCOTLAND — Hebrides — Eye Peninsula NE — Light.**

Source: Northern Lighthouse Board Notice 10/16

1. The range of the light at Tiumpan Head, in position 58° 15' .67N. , 6° 08' .27W. , has been temporarily reduced to 12 miles.(ETRS89 Datum)

## Charts affected – SC5616

---

### L6642/16 SCOTLAND — West Coast — Inner Sound — Raasay — Light-beacons. Beacons.

Source: Qinetiq

#### Chart: SC5616·6 ETRS89 DATUM

Replace	⚓ No 5 with	⚓ Fl.R.3s	57° 29' ·67N. , 5° 58' ·71W.
	⚓ with	⚓ Fl(3)R.10s	57° 27' ·34N. , 5° 59' ·95W.
	⚓ with	⚓ Fl(2)R.5s	57° 25' ·54N. , 6° 01' ·89W.

#### Chart: SC5616·7 (Panel A, Inner Sound and Sound of Raasay – Northern Part) ETRS89 DATUM

Replace	⚓ with	⚓ Fl.R.3s	57° 29' ·67N. , 5° 58' ·71W.
---------	--------	-----------	------------------------------

---

### L72/17 SCOTLAND — West Coast — Loch Na Bèiste — Wreck.

Source: UKHO

#### Chart: SC5616·4 (Panel A, Loch Duich to Loch Carron) ETRS89 DATUM

Insert	 Wk	57° 15' ·86N. , 5° 42' ·90W.
--------	--	------------------------------

#### Chart: SC5616·5 ETRS89 DATUM

Insert	 Wk	57° 15' ·86N. , 5° 42' ·90W.
--------	--	------------------------------

---

### L344/17 SCOTLAND — Hebrides — Vatersay — Cornaig Bay — Depths.

Source: Bob Bradfield

#### Chart: SC5616·21 (Panel A, Approaches to Castle Bay) ETRS89 DATUM

Insert	depth, 1 <sub>s</sub> , enclosed by 2m contour	(a) 56° 56' ·54N. , 7° 31' ·22W.
Delete	depth, 9 <sub>s</sub> , close E of:	(a) above

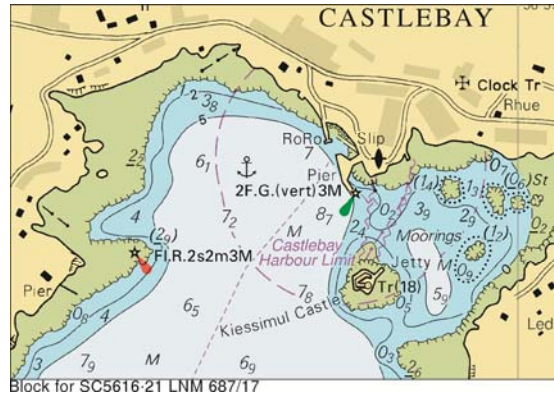
---

### L687/17 SCOTLAND — Hebrides — Castlebay — NM Block.

Source: Caledonian Maritime Assets Ltd

#### Chart: SC5616·21 (Panel B, Castle Bay) ETRS89 DATUM

Insert	the accompanying block, centred on:	56° 57' ·2N. , 7° 29' ·4W.
--------	-------------------------------------	----------------------------



**L2140/17 SCOTLAND — West Coast — Sruth Chomhraig and South Channel — Marine farms.**

Source: Crown Estate

**Chart: SC5616-1 (Panel A, Point of Ardnamurchan to Sound of Arisaig) ETRS89 DATUM**

Insert  56° 46' ·80N. , 5° 50' ·58W.

**Chart: SC5616-1 (Panel B, Continuation to Loch Moidart) ETRS89 DATUM**

Insert  56° 46' ·80N. , 5° 50' ·58W.

Temporary/Preliminary NMs

**L2644(T)/17 SCOTLAND — West Coast — Stoerhead — Light.**

Source: Northern Lighthouse Board Notice 12/16

1. The range of the light at Stoerhead, in position 58° 14' ·40N. , 5° 24' ·16W. , has been temporarily reduced to 12 miles.(ETRS89 DATUM)

**Charts affected – SC5616**

**L3294/17 SCOTLAND — West Coast — Isle of Skye SE — Wreck.**

Source: Maritime and Coastguard Agency

**Chart: SC5616-12 ETRS89 DATUM**

Insert  PA 57° 08' ·53N. , 6° 24' ·57W.

**Chart: SC5616-27 ETRS89 DATUM**

Insert  57° 08' ·5N. , 6° 24' ·6W.

