

## **SC5622 Ireland – South Coast**

The Notices to Mariners (NMs) listed below apply to the latest edition of SC5622 (3<sup>rd</sup> Edition) published on 4<sup>th</sup> January 2018.

---

Temporary/Preliminary NMs

### **L3652(P)/17 IRELAND — South Coast — Dogsnose — Light.**

Source: Port of Cork Company

1. The sectored light at Fort Davis in position 51° 48' .826N. , 8° 15' .791W. has altered sectors and light characteristics as follows:

F.G	351.5°-352.5° (1°)
Q.G	352.5°-353.5° (1°)
F.W	353.5°-355.5° (2°)
Q.R	355.5°-356.5° (1°)
F.R	356.5°-357.5° (1°)

2. Mariners are advised that all ENC's of the area are showing the correct information.
3. These changes will be included in the next New Editions of Charts 1777 and 1765.(ETRS89 DATUM)

## **Charts affected – SC5622**

---

### **L1175/18 IRELAND — East Coast — Tuskar Rock S — Automatic Identification System.**

Source: Commissioners of Irish Lights

#### **Chart: SC5622·1 ETRS89 DATUM**

Delete **Automatic Identification System, AIS**, at light-buoy 52° 10' .6N. , 6° 13' .3W.

---

### **L1261/18 IRELAND — South Coast — Fairway and The Sound — Depths.**

Source: Port of Cork

#### **Chart: SC5622·8 ETRS89 DATUM**

Replace depth, *13<sub>s</sub>*, with depth, *12<sub>s</sub>* 51° 48' .048N. , 8° 15' .678W.

#### **Chart: SC5622·9 ETRS89 DATUM**

Insert depth, *12<sub>s</sub>* 51° 48' .05N. , 8° 15' .68W.

#### **Chart: SC5622·10 ETRS89 DATUM**

Replace depth, *13<sub>s</sub>*, with depth, *12<sub>s</sub>* 51° 48' .048N. , 8° 15' .678W.

**Chart: SC5622·11 ETRS89 DATUM**

Insert depth, 9, and extend 10m contour SE to  
enclose (a) 51° 50' ·640N. , 8° 15' ·786W.  
Delete depth, 10, close SW of: (a) above

---

**L1438/18 IRELAND — South Coast — Roches Point — Automatic Identification System.**

Source: Commissioners of Irish Lights

**Chart: SC5622·1 ETRS89 DATUM**

Insert Automatic Identification System, AIS, at light 51° 47' ·6N. , 8° 15' ·1W.

**Chart: SC5622·7 ETRS89 DATUM**

Insert Automatic Identification System, AIS, at light 51° 47' ·56N. , 8° 15' ·26W.

**Chart: SC5622·8 ETRS89 DATUM**

Insert Automatic Identification System, AIS, at light 51° 47' ·584N. , 8° 15' ·286W.

**Chart: SC5622·9 ETRS89 DATUM**

Insert Automatic Identification System, AIS, at light 51° 47' ·58N. , 8° 15' ·29W.

---

**Notices to Mariners - Weekly Edition 25/2018 Ireland - South Coast, Dungarvan Harbour.**

— Chart 2017 — New Edition Announcement.

**Chart SC5622·5 WGS84 DATUM**

The following changes were published in the new edition of chart 2017, which is the source chart for the above folio sheet:

*Includes changes to marine farms and shellfish beds. (The chart limits have been revised as the horizontal datum of this chart has been transferred to ETRS89 Datum.). Mariners should therefore navigate with caution on sheet SC5622·5 and be aware that any subsequent Notices to Mariners applied to this sheet are issued for information only.*

These changes will be included in the next new edition of SC5622.

---

**Notices to Mariners - Weekly Edition 25/2018 International Chart Series, Ireland - South Coast, Old Head of Kinsale to Tuskar Rock.**

— Chart 2049 — New Edition Announcement.

**Chart SC5622-2 WGS84 DATUM**

The following changes were published in the new edition of chart 2049, which is the source chart for the above folio sheet:

*Includes changes to marine farms and shellfish beds. (The chart limits have been revised as the horizontal datum of this chart has been transferred to ETRS89 Datum.). Mariners should therefore navigate with caution on sheet SC5622-2 and be aware that any subsequent Notices to Mariners applied to this sheet are issued for information only.*

These changes will be included in the next new edition of SC5622.

---

**Notices to Mariners - Weekly Edition 25/2018 Ireland - South Coast, Youghal.  
— Chart 2071 — New Edition Announcement.**

**Chart SC5622-6 WGS84 DATUM**

The following changes were published in the new edition of chart 2071, which is the source chart for the above folio sheet:

*Includes changes to marine farms and shellfish beds. (The chart limits have been revised as the horizontal datum of this chart has been transferred to ETRS89 Datum.). Mariners should therefore navigate with caution on sheet SC5622-6 and be aware that any subsequent Notices to Mariners applied to this sheet are issued for information only.*

These changes will be included in the next new edition of SC5622.

---

**L3548/18 IRELAND — South Coast — — Legend.**

Source: Dunmore East Harbour Master

**Chart: SC5622-3 (Panel B, Dunmore East Harbour) ETRS89 DATUM**

Insert legend, *Less water reported (2018)*, orientated NW/SE, centred on: 52° 08' ·954N. , 6° 59' ·418W.

---

**L3720/18 IRELAND — South Coast — — Light.**

Source: Commissioners of Irish Lights

*Note:* Radar beacon and AIS remain unchanged.

**Chart: SC5622-1 ETRS89 DATUM**

Amend range of Fastnet Rock light to, 18M

51° 23' ·3N. , 9° 36' ·0W.

---

**L4026/18 IRELAND — South Coast — — Works.**

Source: Port of Cork Notice 9/18

**Chart: SC5622·10 ETRS89 DATUM**

Insert maritime limit, pecked line, joining: 51° 49' ·960N. , 8° 19' ·406W.  
51° 49' ·960N. , 8° 19' ·503W.  
51° 50' ·181N. , 8° 19' ·503W.  
51° 50' ·181N. , 8° 19' ·371W.  
and  
(a) 51° 50' ·055N. , 8° 18' ·271W.  
(b) 51° 50' ·137N. , 8° 18' ·271W.  
(c) 51° 50' ·137N. , 8° 18' ·097W.  
(d) 51° 50' ·095N. , 8° 18' ·099W.  
legend, Works in progress (2018), centred on: 51° 50' ·102N. , 8° 19' ·392W.  
legend, Works in progress (2018), within: (a)-(d) above

**Chart: SC5622·11 ETRS89 DATUM**

Insert maritime limit, pecked line, joining: 51° 49' ·960N. , 8° 19' ·406W.  
51° 49' ·960N. , 8° 19' ·503W.  
51° 50' ·181N. , 8° 19' ·503W.  
51° 50' ·181N. , 8° 19' ·371W.  
51° 50' ·026N. , 8° 19' ·503W.  
and  
(a) 51° 50' ·055N. , 8° 18' ·271W.  
(b) 51° 50' ·137N. , 8° 18' ·271W.  
(c) 51° 50' ·137N. , 8° 18' ·097W.  
(d) 51° 50' ·095N. , 8° 18' ·099W.  
legend, Works in progress (2018), centred on: 51° 50' ·102N. , 8° 19' ·392W.  
legend, Works in progress (2018), within: (a)-(d) above

---

**Notices to Mariners - Weekly Edition 38/2018 International Chart Series,  
Ireland - South Coast, Port of Cork, Lower Harbour and Approaches.  
— Chart 1777 — New Edition Announcement.**

**Charts SC5622·8, SC5622·10, SC5622·11, and SC5622·13 WGS84 DATUM**

The following changes were published in the new edition of chart 1777, which is the source chart for the above folio sheets:

*Includes changes to lights and depths in the Approaches to Cork, from the latest port authority surveys. Mariners should therefore navigate with caution on sheets SC5622·8, SC5622·10,*

SC5622-11, and SC5622-13 *and be aware that any subsequent Notices to Mariners applied to these sheets are issued for information only.*

These changes will be included in the next new edition of SC5622.

---

### **L4565/18 IRELAND — South Coast — — Depths. Legend.**

Source: Geological Survey of Ireland

#### **Chart: SC5622-3 (Panel A, Entrance to Waterford Harbour) ETRS89 DATUM**

Insert	depth, <i>4<sub>s</sub></i> , enclosed by 5m contour	52° 07' ·82N. , 7° 01' ·89W.
	depth, <i>0<sub>s</sub></i> , enclosed by 2m contour	52° 09' ·30N. , 6° 54' ·52W.

#### **Chart: SC5622-3 (Panel B, Dunmore East Harbour) ETRS89 DATUM**

Insert	depth, <i>2<sub>2</sub></i>	(a) 52° 08' ·987N. , 6° 59' ·513W.
Delete	depth, <i>4<sub>9</sub></i> , close NW of:	(a) above
Amend	legend to, <i>Dredged to 3-1m (2018)</i> , centred on:	52° 08' ·898N. , 6° 59' ·446W.

---

### **L4614/18 IRELAND — South Coast — — Lights.**

Source: Dunmore East Harbourmaster

#### **Chart: SC5622-3 (Panel A, Entrance to Waterford Harbour) ETRS89 DATUM**

Amend	light to, FI(3)R.10s4M	52° 08' ·98N. , 6° 59' ·40W.
	light to, FI(3)G.10s4M	52° 08' ·96N. , 6° 59' ·49W.

#### **Chart: SC5622-3 (Panel B, Dunmore East Harbour) ETRS89 DATUM**

Amend	light to, FI(3)R.10s6m4M	52° 08' ·981N. , 6° 59' ·401W.
	light to, FI(3)G.10s6m4M	52° 08' ·960N. , 6° 59' ·488W.

---

### **L5088/18 IRELAND — South Coast — — Legend.**

Source: UKHO

#### **Chart: SC5622-3 (Panel B, Dunmore East Harbour) ETRS89 DATUM**

Amend	legend to, <i>3-1m (2018)</i> , centred on:	52° 08' ·893N. , 6° 59' ·446W.
-------	---	--------------------------------

---

**Notices to Mariners - Weekly Edition 43/2018 Ireland - South Coast, Old Head of Kinsale to Power Head.**

**— Chart 1765 — New Edition** Announcement.

### Charts SC5622·9 and SC5622·14 WGS84 DATUM

The following changes were published in the new edition of chart 1765, which is the source chart for the above folio sheets:

*Includes changes to depths from the latest Port of Cork Company Surveys and changes to aids to navigation. Mariners should therefore navigate with caution on sheets SC5622·9 and SC5622·14 and be aware that any subsequent Notices to Mariners applied to these sheets are issued for information only.*

These changes will be included in the next new edition of SC5622.

---

### L168/19 IRELAND — South Coast — — Depths. Legend.

Source: Dunmore East Harbourmaster

#### Chart: SC5622·3 (Panel B, Dunmore East Harbour) ETRS89 DATUM

Insert	depth, 2 <sub>9</sub>	52° 08' ·909N. , 6° 59' ·404W.
		52° 08' ·869N. , 6° 59' ·437W.
	Legend, <i>Less water reported (2018)</i> , centred on:	52° 08' ·876N. , 6° 59' ·496W.
Replace	depth, 5 <sub>3</sub> , with depth, 3 <sub>5</sub> , and extend 5m contour N to enclose	52° 09' ·003N. , 6° 59' ·397W.
	depth, 4 <sub>4</sub> , with depth, 3 <sub>8</sub>	52° 08' ·998N. , 6° 59' ·442W.

---

### L201/19 IRELAND — South Coast — — Buoy.

Source: Port of Cork Notice 18/18

#### Chart: SC5622·10 ETRS89 DATUM

Delete	 Q.R RA2	51° 50' ·151N. , 8° 19' ·509W.
--------	---	--------------------------------

#### Chart: SC5622·11 ETRS89 DATUM

Delete	 Q.R RA2	51° 50' ·151N. , 8° 19' ·511W.
--------	---	--------------------------------

---

### L2302/19 IRELAND — South Coast — — Depth.

Source: rv Keary

#### Chart: SC5622·2 ETRS89 DATUM

Insert	depth, 4 <sub>9</sub> , enclosed by 5m contour	51° 48' ·72N. , 8° 00' ·52W.
--------	--	------------------------------

#### Chart: SC5622·7 ETRS89 DATUM

Insert	depth, 4 <sub>9</sub> , enclosed by 5m contour	51° 48' ·72N. , 8° 00' ·52W.
--------	--	------------------------------

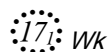
---

**L2806/19 IRELAND — South Coast — — Wreck.**

Source: rv Celtic Voyager

**Chart: SC5622·10 ETRS89 DATUM**

Insert



51° 48' ·845N. , 8° 16' ·450W.

---

**L3577/19 IRELAND — South Coast — — Dolphin. Depth.**

Source: Commissioners of Irish Lights

**Chart: SC5622·12 (Panel A, Port of Cork, Upper Harbour West) ETRS89 DATUM**

Insert



(a) 51° 52' ·410N. , 8° 19' ·720W.

Delete

depth, 1, close N of:

(a) above

---

**L3636/19 IRELAND — South Coast — — Buoy.**

Source: Commissioners of Irish Lights

**Chart: SC5622·2 ETRS89 DATUM**

Move

 *Fl(3)R. 10s*, from:

51° 48' ·59N. , 8° 00' ·75W.

to:

51° 48' ·43N. , 8° 00' ·60W.

**Chart: SC5622·7 ETRS89 DATUM**

Move

 *Fl(3)R. 10s*, from:

51° 48' ·59N. , 8° 00' ·73W.

to:

51° 48' ·43N. , 8° 00' ·60W.

---

**L3813/19 IRELAND — South Coast — — NM Blocks.**

Source: Commissioners of Irish Lights

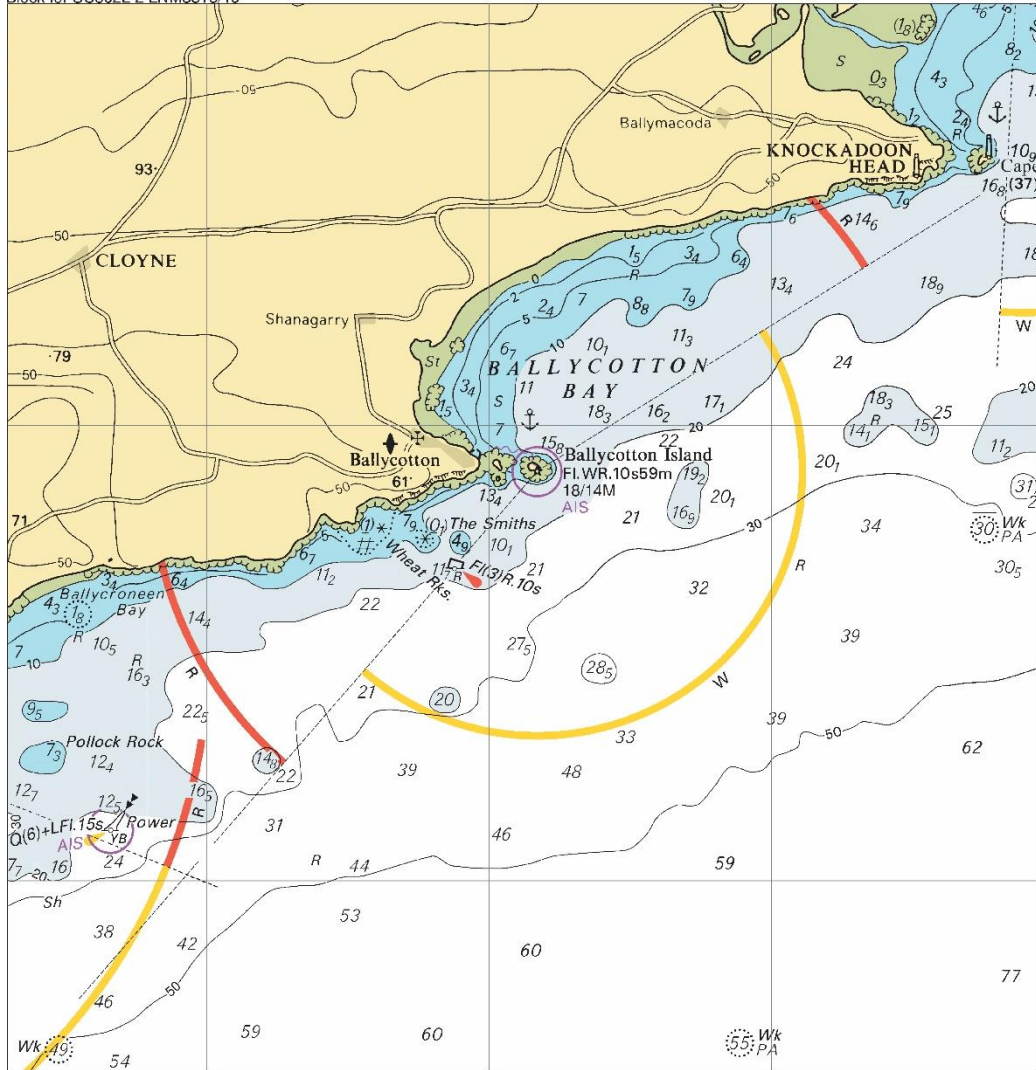
**Chart: SC5622·2 ETRS89 DATUM**

Insert

the accompanying block, centred on:

51° 48' ·8N. , 8° 00' ·9W.

Block for SC5622-2 LNM3813/19

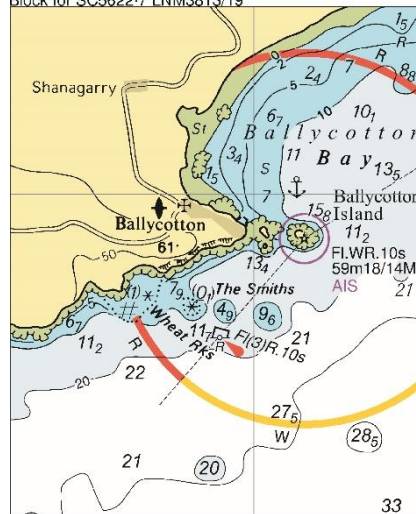


**Chart: SC5622-7 ETRS89 DATUM**

Insert the accompanying block, centred on:

51° 49' .5N. , 7° 58' .7W.

Block for SC5622-7 LNM3813/19





**L5476/19 IRELAND — South Coast — — Dredged depths.**

Source: New Ross Port Harbour Master

**Chart: SC5622·4 (Panel A, Passage East to Beacon Quay and Pink Point)**

ETRS89 DATUM

Amend dredged depth to, *2·0m*, centred on:

52° 17' ·10N. , 7° 00' ·51W.  
52° 16' ·71N. , 7° 00' ·15W.  
52° 21' ·10N. , 6° 59' ·77W.  
52° 20' ·02N. , 6° 59' ·61W.

**Chart: SC5622·4 (Panel B, Continuation of the River Barrow to New Ross) ETRS89 DATUM**

Amend dredged depth to, *2·0m*, centred on:

52° 22' ·08N. , 6° 58' ·79W.  
52° 21' ·10N. , 6° 59' ·77W.  
52° 20' ·02N. , 6° 59' ·61W.

---

Temporary/Preliminary NMs

**L418(T)/20 IRELAND — South Coast — — Works.**

Source: Port of Cork Notice 22/19

1. Marina installation works are taking place at Cove Sailing Club, Cobh, in the vicinity of position 51° 50' ·748N. , 8° 18' ·544W.
2. Mariners are advised to navigate with caution in the area.(ETRS89 DATUM)

**Chart affected – SC5622**

---

**L742/20 IRELAND — South Coast — — Wreck.**

Source: Irish Coast Guard

**Chart: SC5622·2 ETRS89 DATUM**

Insert ++ 52° 00' ·9N. , 7° 01' ·9W.

---

**Notices to Mariners - Weekly Edition 09/2020 British Isles, Western Approaches to Saint George's Channel and Bristol Channel. — Chart 1123— New Edition Announcement.**

**Chart SC5622·1 WGS84 DATUM**

The following changes were published in the new edition of chart 1123, which is the source chart for the above folio sheet:

*Includes Omission of Detail areas and general updating throughout. Mariners should therefore navigate with caution on sheets SC5622.1 and be aware that any subsequent Notices to Mariners applied to this sheet are issued for information only.*

These changes will be included in the next new edition of SC5622.

---

**L2754/20 IRELAND — South Coast — — Depths. Drying height.**

Source: Geological Survey Ireland

**Chart: SC5622.7 ETRS89 DATUM**

Insert depth, 18<sub>s</sub>, and extend 20m contour E to enclose (a) 51° 29' .26N. , 9° 12' .36W.  
Delete depth, 24, close N of: (a) above  
Insert depth, 13, and extend 20m contour SE to enclose 51° 30' .92N. , 9° 09' .23W.

---

Temporary/Preliminary NMs

**~~L3523(T)/20 IRELAND — South Coast — — Virtual aids to navigation.~~**

**~~Buoyage.~~**

~~Source: Wexford Country Council~~

- ~~1. A recent survey has shown the aids to navigation along the River Barrow, from Barrow Bridge 52° 16' .83N. , 7° 00' .31W. to New Ross Town 52° 23' .77N. , 6° 56' .83W. , are unreliable. Buoyage may be off station and showing different characteristics to those charted.~~
- ~~2. Mariners are advised to navigate with caution in the area.~~
- ~~3. Chart 2046 will be updated when full details are available.~~

(ETRS89 DATUM)

**~~Chart affected — SC5621 and SC5622~~**

---

Temporary/Preliminary NMs

**L3728(T)/20 IRELAND — South Coast — — Buoy.**

Source: Port of Waterford Notice 8/20

1. Yellow special light-buoys, *Fl.Y.6s*, for data monitoring, have been established in the following positions:  
  
52° 16' .00N. , 6° 58' .74W.  
52° 15' .55N. , 7° 02' .10W.

2. Mariners are advised to navigate with caution in the area.

(ETRS89 DATUM)

## **Chart affected – SC5621 and SC5622**

---

Temporary/Preliminary NMs

**L3730(P)/20 IRELAND — South Coast — — Depths. Buoyage.**

Source: Wexford County Council

1. Recent survey information has shown numerous depths less than charted exist along the River Barrow, from Barrow Bridge ( $52^{\circ} 16' \cdot 83N.$ ,  $7^{\circ} 00' \cdot 31W.$ ) to New Ross Town ( $52^{\circ} 23' \cdot 77N.$ ,  $6^{\circ} 56' \cdot 83W.$ )
2. Navigation aids are reported to be unreliable, such as buoys off station and showing different characteristics to those charted.
3. Mariners are advised to navigate with caution in the area.
4. Chart 2046 will be updated when full details are available.
5. Former Notice L3523(T)/20 is cancelled.

(ETRS89 DATUM)

## **Chart affected – SC5621 and SC5622**

---