

Admiralty Leisure Folio
SC5623 Ireland – South West Coast

L3400/17 IRELAND — West Coast — East Entrance — Buoy.

Source: Commissioners of Irish Lights Notice 7/16

Chart: SC5623-5 WGS84 DATUM

Insert  VQ(3)5s 51° 38' .74N. , 9° 45' .94W.

Chart: SC5623-7 WGS84 DATUM

Insert  VQ(3)5s 51° 38' .74N. , 9° 45' .94W.

L1175/18 IRELAND — East Coast — Tuskar Rock S — Automatic Identification System.

Source: Commissioners of Irish Lights

Chart: SC5623-1 ETRS89 DATUM

Delete Automatic Identification System, AIS, at light-buoy 52° 10' .6N. , 6° 13' .3W.

L1438/18 IRELAND — South Coast — Roches Point — Automatic Identification System.

Source: Commissioners of Irish Lights

Chart: SC5623-1 ETRS89 DATUM

Insert Automatic Identification System, AIS, at light 51° 47' .6N. , 8° 15' .1W.

Chart: SC5623-3 ETRS89 DATUM

Insert Automatic Identification System, AIS, at light 51° 47' .56N. , 8° 15' .26W.

L1966/18 IRELAND — West Coast — Dinish Island W — Light-beacon. Buoy.

Source: Irish Maritime Administration Notice 13/18

Chart: SC5623-6 (Panel A, Castletown Bearhaven) WGS84 DATUM

Replace  Fl.G.5s4M No 3 with  Fl.G.5s No 3 51° 38' .816N. , 9° 54' .460W.

Notices to Mariners - Weekly Edition 26/2018 Ireland - West Coast, Bantry Bay, Shot Head to Bantry.
— Chart 1838 — New Edition Announcement.

Charts SC5623-4 and SC5623-5 WGS84 DATUM

The following changes were published in the new edition of chart 1838, which is the source chart for the above folio sheets:

Includes changes to marine farms and shellfish beds. The chart limits have been revised as the horizontal datum of this chart has been transferred to ETRS89 Datum. Mariners should therefore navigate with caution on sheets SC5623-4 and SC5623-5 and be aware that any subsequent Notices to Mariners applied to these sheets are issued for information only.

These changes will be included in the next new edition of SC5623.

Notices to Mariners - Weekly Edition 26/2018 Ireland - West Coast, Bantry Bay, Black Ball Head to Shot Head.
— Chart 1840 — New Edition Announcement.

Charts SC5623-5, SC5623-6 and SC5623-7 WGS84 DATUM

The following changes were published in the new edition of chart 1840, which is the source chart for the above folio sheets:

Includes changes to marine farms. The chart limits have been revised as the horizontal datum of this chart has been transferred to ETRS89 Datum. Mariners should therefore navigate with caution on sheets SC5623-5, SC5623-6 and SC5623-7 and be aware that any subsequent Notices to Mariners applied to these sheets are issued for information only.

These changes will be included in the next new edition of SC5623.

Notices to Mariners - Weekly Edition 26/2018 Ireland - South Coast, Long Island Bay to Castlehaven.

— Chart 2129 — New Edition Announcement.

Charts SC5623-12 and SC5623-14 WGS84 DATUM

The following changes were published in the new edition of chart 2129, which is the source chart for the above folio sheets:

Includes changes to marine farms and shellfish beds. The chart limits have been revised as the horizontal datum of this chart has been transferred to ETRS89 Datum. Mariners should

therefore navigate with caution on sheets SC5623-12 and SC5623-14 and be aware that any subsequent Notices to Mariners applied to these sheets are issued for information only.

These changes will be included in the next new edition of SC5623.

Notices to Mariners - Weekly Edition 26/2018 Ireland - South-West Coast, Mizen Head to Gascanane Sound.

— Chart 2184 — New Edition Announcement.

Charts SC5623-10 and SC5623-11 WGS84 DATUM

The following changes were published in the new edition of chart 2184, which is the source chart for the above folio sheets:

Includes changes to marine farms and shellfish beds. The chart limits have been revised as the horizontal datum of this chart has been transferred to ETRS89 Datum. Mariners should therefore navigate with caution on sheets SC5623-10 and SC5623-11 and be aware that any subsequent Notices to Mariners applied to these sheets are issued for information only.

These changes will be included in the next new edition of SC5623.

Notices to Mariners - Weekly Edition 26/2018 Ireland - South-West Coast, Dunmanus Bay.

— Chart 2552 — New Edition Announcement.

Charts SC5623-6, SC5623-8, SC5623-9 and SC5623-10 WGS84 DATUM

The following changes were published in the new edition of chart 2552, which is the source chart for the above folio sheets:

Includes changes to marine farms and shellfish beds. The chart limits have been revised as the horizontal datum of this chart has been transferred to ETRS89 Datum. Mariners should therefore navigate with caution on sheets SC5623-6, SC5623-8, SC5623-9 and SC5623-10 and be aware that any subsequent Notices to Mariners applied to these sheets are issued for information only.

These changes will be included in the next new edition of SC5623.

Notices to Mariners - Weekly Edition 26/2018 Ireland - South Coast, Baltimore Harbour.

— Chart 3725 — New Edition Announcement.

Chart SC5623-13 WGS84 DATUM

The following changes were published in the new edition of chart 3725, which is the source chart for the above folio sheet:

Includes changes to marine farms and shellfish beds. (The chart limits have been revised as the horizontal datum of this chart has been transferred to ETRS89 Datum.) Mariners should therefore navigate with caution on sheet SC5623-13 and be aware that any subsequent Notices to Mariners applied to this sheet are issued for information only.

These changes will be included in the next new edition of SC5623.

L03/18 ENGLAND — IRELAND — Baltimore Harbour — Label

Source: UKHO

Chart: SC5623-13 (Panel A, Baltimore Harbour) WGS84 DATUM

Replace graticule label, 24', with, graticule label outside S border, bottom left of
12'·5 panel

L3720/18 IRELAND — South Coast — — Light.

Source: Commissioners of Irish Lights

Note: Radar beacon and AIS remain unchanged.

Chart: SC5623-1 ETRS89 DATUM

Amend range of Fastnet Rock light to, 18M 51° 23' ·3N. , 9° 36' ·0W.

Chart: SC5623-2 ETRS89 DATUM

Amend Fastnet Rock light to, Fl.5s53m18M 51° 23' ·31N. , 9° 36' ·24W.

L4400/18 IRELAND — West Coast — — Works.

Source: Department of Transport Notice 33/18

Chart: SC5623-6 (Panel A, Castletown Bearhaven) ETRS89 DATUM

Insert legend, Works in progress (2018), centred on: 51° 38' ·656N. , 9° 54' ·513W.

Chart: SC5623-7 ETRS89 DATUM

Insert legend, Works in progress (2018), centred on: 51° 38' ·656N. , 9° 54' ·513W.

Notices to Mariners - Weekly Edition 43/2018 Ireland - South Coast, Old Head of Kinsale to Power Head.
— Chart 1765 — New Edition Announcement.

Chart SC5623-18 WGS84 DATUM

The following changes were published in the new edition of chart 1765, which is the source chart for the above folio sheet:

Includes changes to depths from the latest Port of Cork Company Surveys and changes to aids to navigation. Mariners should therefore navigate with caution on sheet SC5623-18 and be aware that any subsequent Notices to Mariners applied to this sheet are issued for information only.

These changes will be included in the next new edition of SC5623.


L5567/18 IRELAND — West Coast — — Buoyage.

Source: Harbour Master Castletownbere

Chart: SC5623-6 (Panel A, Castletown, Bearhaven) ETRS89 DATUM

Insert  *Fl(4)Y.20s* 51° 38' ·65N. , 9° 53' ·96W.
51° 38' ·77N. , 9° 53' ·19W.
51° 38' ·86N. , 9° 52' ·59W.

Chart: SC5623-7 ETRS89 DATUM

Insert  *Fl(4)Y.20s* 51° 38' ·65N. , 9° 53' ·96W.
51° 38' ·77N. , 9° 53' ·19W.
51° 38' ·86N. , 9° 52' ·59W.

L2302/19 IRELAND — South Coast — — Depth.

Source: rv Keary

Chart: SC5623-3 ETRS89 DATUM

Insert depth, 4_s, enclosed by 5m contour 51° 48' ·72N. , 8° 00' ·52W.

L3380/19 IRELAND — South Coast — — Depths.

Source: rv Lir

Chart: SC5623-2 ETRS89 DATUM

Replace depth, 8_s, with depth, 3_s, and extend 5m contour south to 51° 29' ·21N. , 9° 30' ·37W.

enclose

Chart: SC5623·12 ETRS89 DATUM

Insert depth, 3, enclosed by 5m contour (a) 51° 29' ·21N. , 9° 30' ·37W.
Delete depth, 8, close N of: (a) above

L3590/19 IRELAND — South Coast — — Automatic Identification System.

Source: Commissioners of Irish Lights

Chart: SC5623·12 ETRS89 DATUM

Insert Automatic Identification System, A/S, at light-buoy 51° 28' ·45N. , 9° 23' ·45W.

Chart: SC5623·13 (Panel A, Baltimore Harbour) ETRS89 DATUM

Insert Automatic Identification System, A/S, at light-buoy 51° 28' ·447N. , 9° 23' ·449W.

Chart: SC5623·14 ETRS89 DATUM

Insert Automatic Identification System, A/S, at light-buoy 51° 28' ·45N. , 9° 23' ·45W.

L3636/19 IRELAND — South Coast — — Buoy.

Source: Commissioners of Irish Lights

Chart: SC5623·3 ETRS89 DATUM

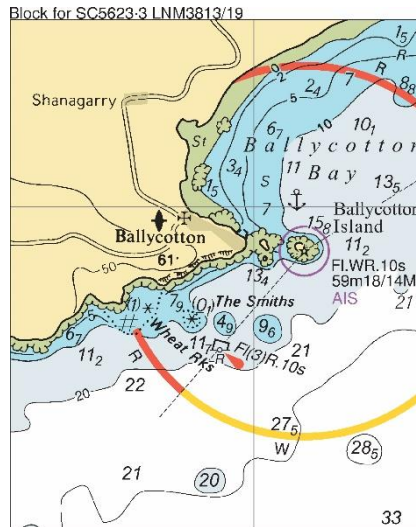
Move  F/(3)R. 10s, from: 51° 48' ·59N. , 8° 00' ·73W.
to: 51° 48' ·43N. , 8° 00' ·60W.

L3813/19 IRELAND — South Coast — — NM Blocks.

Source: Commissioners of Irish Lights

Chart: SC5623·3 ETRS89 DATUM

Insert the accompanying block, centred on: 51° 49' ·5N. , 7° 58' ·7W.



L4106/19 IRELAND — South Coast — — Rocks. Depths. Danger lines.

Source: rv Geo

Chart: SC5623·12 ETRS89 DATUM



- Insert  with seabed type, *R* (a) 51° 28' ·99N. , 9° 23' ·85W.
- Delete depth, 4, close E of: (a) above
- Insert depth, 2, and extend danger line, SW to enclose 51° 30' ·30N. , 9° 27' ·95W.
-  (Q₃) (b) 51° 32' ·41N. , 9° 25' ·29W.
- Delete depth, 4, close SW of: (b) above
- Insert depth, 0₂, and extend danger line S to enclose (c) 51° 32' ·50N. , 9° 24' ·47W.
- Delete depth, 1₈, close NW of: (c) above

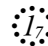
Chart: SC5623·13 (Panel A, Baltimore Harbour) ETRS89 DATUM

- Insert  with seabed type, *R* 51° 28' ·99N. , 9° 23' ·854W.

Chart: SC5623·13 (Panel B, Continuation of The Sound) ETRS89 DATUM

- Insert  with seabed type, *R* 51° 29' ·678N. , 9° 24' ·314W.

Chart: SC5623·14 ETRS89 DATUM

- Insert depth, 4₄, and extend 5m contour S to enclose (a) 51° 29' ·15N. , 9° 18' ·00W.
- Delete depth, 14₆, close W of: (a) above
- Insert  with seabed type, *R* (b) 51° 28' ·99N. , 9° 23' ·85W.
- Delete depth, 4, close E of: (b) above

L4756/19 IRELAND — South Coast — — Depths. Drying height.

Source: Geological Survey Ireland

Chart: SC5623·2 ETRS89 DATUM

Insert depth, δ_3 , enclosed by 10m contour 51° 28' ·62N. , 9° 28' ·06W.

Chart: SC5623·12 ETRS89 DATUM

Insert depth, δ_3 , enclosed by 10m contour (a) 51° 28' ·62N. , 9° 28' ·06W.

Delete depth, 14_6 , close NE of: (a) above

Insert depth, δ_7 , enclosed by 5m contour (b) 51° 29' ·58N. , 9° 30' ·03W.

Delete depth, 10_1 , close NE of: (b) above

Insert depth, δ_2 , enclosed by 2m contour 51° 30' ·06N. , 9° 27' ·44W.

drying height, δ_3 , enclosed by 0m low water line (c) 51° 32' ·46N. , 9° 25' ·13W.

Delete depth, δ_3 , close NE of: (c) above

L82/20 IRELAND — South Coast — — Breakwater. Legend.

Source: UKHO

Chart: SC5623·13 (Panel A, Baltimore Harbour) ETRS89 DATUM

Insert breakwater, double firm line, width 10m, joining: 51° 29' ·271N. , 9° 22' ·262W.

51° 29' ·297N. , 9° 22' ·314W.

Delete legend, Works in progress (2012), centred on: 51° 29' ·285N. , 9° 22' ·260W.

Notices to Mariners - Weekly Edition 09/2020 British Isles, Western Approaches to Saint George's Channel and Bristol Channel.

— Chart 1123— New Edition Announcement.

Chart SC5623·1 WGS84 DATUM

The following changes were published in the new edition of chart 1123, which is the source chart for the above folio sheet:

Includes Omission of Detail areas and general updating throughout. Mariners should therefore navigate with caution on sheets SC5623·1 and be aware that any subsequent Notices to Mariners applied to this sheet are issued for information only.

These changes will be included in the next new edition of SC5623.

L1308/20 IRELAND — West Coast — — Depths. Legends. Light. Maritime limit.

Source: Bantry Bay Port Company

Chart: SC5623·4 ETRS89 DATUM

Insert	depth, 9_6 , and extend 10m contour NE to enclose	(a) 51° 42' ·24N. , 9° 27' ·80W.
Delete	depth, 13_3 , close NE of:	(a) above
Insert	circular maritime limit, radius 300m, pecked line, centred on:	(b) 51° 41' ·01N. , 9° 28' ·42W.
	legend, <i>Turning circle</i> , centred on:	(b) above
	★ 2F.G(vert)	(c) 51° 40' ·91N. , 9° 27' ·72W.
Delete	legend, (ru), close W of:	(c) above
Insert	depth, 3_4	(d) 51° 40' ·85N. , 9° 27' ·79W.
Delete	depth, 4_7 , close N of:	(d) above
Replace	depth, 9_3 , with depth, 8_6	51° 41' ·10N. , 9° 28' ·09W.

L2461/20 IRELAND — West Coast — — Pontoon. Light.

Source: Commissioners of Irish Lights and UKHO

Chart: SC5623·6 (Panel A, Castletown Bearhaven) ETRS89 DATUM

Insert	★ 2F.R(vert)	(a) 51° 39' ·104N. , 9° 54' ·454W.
	pontoon, single firm line, joining:	51° 39' ·132N. , 9° 54' ·502W.
		(a) above

L2462/20 IRELAND — West Coast — — Light.

Source: Commissioners of Irish Lights and Bantry Bay Port Company

Chart: SC5623·4 ETRS89 DATUM

Amend	light to, 2F.R(vert)	51° 40' ·91N. , 9° 27' ·72W.
-------	----------------------	------------------------------

L2754/20 IRELAND — South Coast — — Depths. Drying height.

Source: Geological Survey Ireland

Chart: SC5623·2 ETRS89 DATUM

Insert	depth, 18_8 , and extend 20m contour E to enclose	(a) 51° 29' ·26N. , 9° 12' ·36W.
Delete	depth, 24 , close N of:	(a) above

Insert depth, 13, and extend 20m contour SE to enclose 51° 30' ·92N. , 9° 09' ·23W.

Chart: SC5623·3 ETRS89 DATUM

Insert depth, 18₈, and extend 20m contour E to enclose (a) 51° 29' ·26N. , 9° 12' ·36W.

Delete depth, 24, close N of: (a) above

Insert depth, 13, and extend 20m contour SE to enclose 51° 30' ·92N. , 9° 09' ·23W.

Chart: SC5623·12 ETRS89 DATUM

Insert  51° 30' ·13N. , 9° 26' ·69W.

drying height, 1₁, enclosed by 0m low water line (a) 51° 29' ·36N. , 9° 26' ·95W.

Delete depth, 4₆, close SW of: (a) above

Insert depth, 2, and extend danger line, dotted line, NE to enclose 51° 29' ·01N. , 9° 26' ·94W.

Chart: SC5623·14 ETRS89 DATUM

Insert  51° 29' ·55N. , 9° 14' ·29W.

depth, 5₄ (a) 51° 29' ·42N. , 9° 14' ·36W.

Delete depth, 9₁, close S of: (a) above

Insert depth, 3₃, enclosed by 5m contour (b) 51° 30' ·31N. , 9° 11' ·46W.

Delete depth, 14₃, close N of: (b) above

Insert depth, 6, and extend 10m contour SE to enclose (c) 51° 30' ·27N. , 9° 11' ·16W.

Delete depth, 22, close S of: (c) above

depth, 8₈, close NW of: (c) above

Insert  (d) 51° 30' ·32N. , 9° 11' ·02W.

Delete depth, 17₁, close S of: (d) above

Replace depth, 29, with depth, 18₈, enclosed by 20m contour 51° 29' ·26N. , 9° 12' ·38W.

Chart: SC5623·15 ETRS89 DATUM

Insert depth, 3₃, enclosed by 5m contour (a) 51° 30' ·31N. , 9° 11' ·46W.

Delete depth, 14₃, close N of: (a) above

Insert depth, 6, and extend 10m contour SE to enclose (b) 51° 30' ·27N. , 9° 11' ·16W.

Delete depth, 8₈, close NW of: (b) above

depth, 17₁, close NE of: (b) above

Insert depth, 13, enclosed by 20m contour 51° 30' ·92N. , 9° 09' ·23W.

Replace depth, 29, with depth, 18₈, and extend 20m contour E to enclose 51° 29' ·26N. , 9° 12' ·38W.

L3090/20 IRELAND — South West Coast — — Depths.

Source: Geological Survey Ireland

Chart: SC5623·8 ETRS89 DATUM

Insert depth, 19₄, and extend 20m contour W to enclose 51° 33' ·43N. , 9° 39' ·95W.

Replace depth, 11₆, with depth, 10₅ 51° 35' ·22N. , 9° 38' ·62W.

L3227/20 IRELAND — West Coast — — Marine farm.

Source: Tim Reardon


Chart: SC5623·5 ETRS89 DATUM

Insert limit of marine farm, pecked line, joining: (a) 51° 39' ·44N. , 9° 47' ·51W.

(b) 51° 39' ·45N. , 9° 46' ·88W.

(c) 51° 39' ·32N. , 9° 46' ·86W.

(d) 51° 39' ·31N. , 9° 47' ·51W.

 , within:

(a)-(d) above


Chart: SC5623·7 ETRS89 DATUM

Insert limit of marine farm, pecked line, joining: (a) 51° 39' ·44N. , 9° 47' ·51W.

(b) 51° 39' ·45N. , 9° 46' ·88W.

(c) 51° 39' ·32N. , 9° 46' ·86W.

(d) 51° 39' ·31N. , 9° 47' ·51W.

 , within:

(a)-(d) above

L3689/20 IRELAND — South Coast — — Light-beacon. Beacon.

Source: Cork County Council

Chart: SC5623·18 ETRS89 DATUM

Insert  Q(9)15s (a) 51° 35' ·67N. , 8° 51' ·02W.

Delete  , close NE of: (a) above

L3735/20 IRELAND — South West Coast — — Submarine pipeline.

Source: Mr Kean and Mr Owens

Chart: SC5623·10 ETRS89 DATUM

Insert submarine pipeline, , joining: 51° 28' ·24N. , 9° 43' ·11W.

51° 28' ·40N. , 9° 43' ·11W.

Chart: SC5623·11 ETRS89 DATUM

Insert submarine pipeline, -----, joining:

51° 28' ·24N. , 9° 43' ·11W.

51° 28' ·40N. , 9° 43' ·11W.

L4150/20 IRELAND — South West Coast — — Depths.

Source: Geological Survey Ireland

Chart: SC5623·6 (Panel B, Dunbeacon Harbour) ETRS89 DATUM

Replace depth, 4₇, with depth, 3₆

51° 36' ·231N. , 9° 34' ·237W.

Chart: SC5623·8 ETRS89 DATUM

Replace depth, 8₃, with depth, 6₈

51° 35' ·41N. , 9° 35' ·61W.

depth, 8₂, with depth, 7₁

51° 35' ·31N. , 9° 35' ·66W.

Chart: SC5623·15 ETRS89 DATUM

Insert depth, 10₃, enclosed by 20m contour

51° 32' ·19N. , 8° 55' ·16W.